

1" GEN2 Pressure Regulator, Manual Spring

REV	DATE	DESCRIPTION	ORIGIN (issued by)	APPROVED
Rev 001	09/01/20	Document No: 135-090120-001	AP	BR

COMPANY PROPRIETARY INFORMATION

Gilmore Technologies, LLC and/or its affiliates (Gilmore). All rights reserved. Gilmore™, Gilmore & Design (Stallion) are registered trademarks or trademarks of Gilmore. This notice and the information contained herein is not to be, in whole or in part, reproduced or transmitted in any form by any means without the express permission of Gilmore. **DISCLAIMER:** Whilst Gilmore has carefully reviewed the contents of this notice and believes the information to be correct, Gilmore does not assume any liability in connection with any use of or reliance upon this information and gives no representation or warranty, express or implied, in respect of the information or any products described herein. This notice is intended for use by persons having suitable technical expertise and skill, at their own discretion and risk. Gilmore may change the information contained herein at any time without notice.

For more information:

Call (713) 468-8778
info@gilmore.com

Gilmore
1231 Lumpkin Road
Houston, TX 77043

1" GEN2 Pressure Regulator, Manual Spring

Gilmore announces the new 1" GEN 2 Pressure Regulator with Manual Spring product line for critical offshore and subsea applications. The GEN 2 Pressure Regulator has been designed with the same footprint as the legacy Gilmore Manual Spring Regulators. This thoroughly redesigned product offering provides an improvement in cycle life and performance.

Features and Benefits:

- Qualification exceeds API 16D requirements – 10,000 cycles at full flow rates and pressures
- Guided hydraulic dampening technology
- Improved deadband performance
- Refined Tungsten Carbide seal trim
- Enhanced bolted plunger guide
- Upgraded dynamic plunger T-Seal
- CRA Material Construction
- Threaded seal carrier alignment
- SAE Gauge and Auxiliary ports
- Vented spring housing for multi-directional drainage
- Performance Data available
- US Patent #10,739,796.

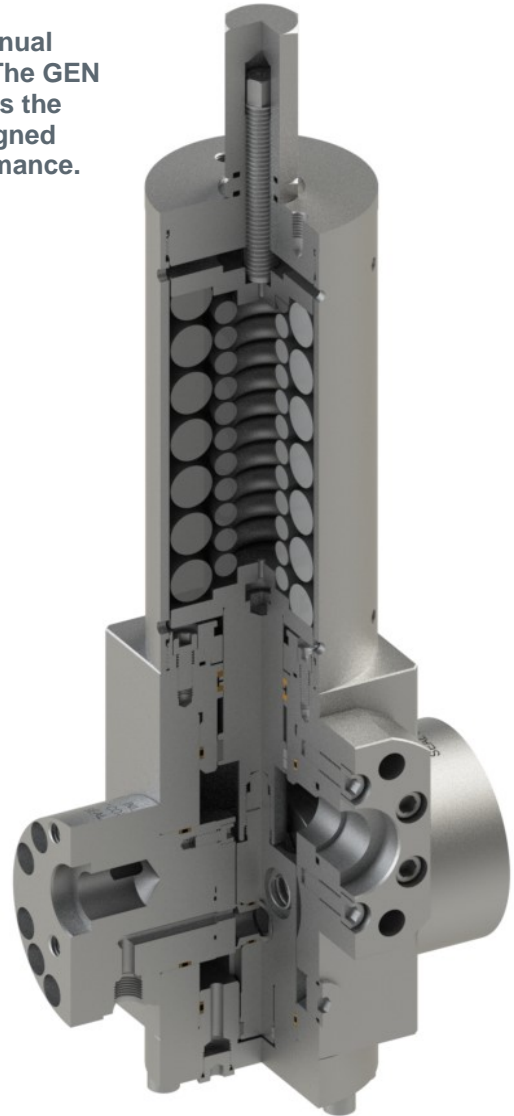


Figure 1. PN 29090: 1" Code 62 GEN 2 Pressure Regulator, Manual Spring, 1-1/2" Outlet, Dual 1" Inlets, 3500 – 1500 psi range

The new Gilmore 1" GEN 2 Manual Spring Regulators are now available for purchase. Gilmore will be creating other drop-in 1" GEN 2 Manual Spring Pressure Regulator configurations as required. The new Gilmore 1" GEN 2 Manual Spring Regulators have identical footprints to their equivalent legacy regulators.

1" GEN2 Pressure Regulator, Manual Spring

Gilmore has exceeded API 16D requirements by qualifying the new 1" GEN 2 Manual Spring Regulator designs to 10,000 cycles, at a starting flow rate of 125 gpm per inlet, at 5000 psi, with 1% - 4% water glycol test fluid. Their qualification report is available by request.

Note that Gilmore will continue to sell and support the legacy 1" Manual Spring Regulators with valve sales, repair kits, seal kits and Aftermarket support.

Please contact Gilmore Customer Service to request a quotation for the 1" GEN 2 Pressure Regulators listed below, or any other configurations required that are not listed.

Table 1. New 1" GEN 2 Pressure Regulators and Legacy Cross-References:

Item	New Valve Description	Legacy PN Reference	New Valve PN	New Repair Kit PN	New Seal Kit PN
1	Valve, Pressure Regulator, GEN 2, Manual Spring, 3500-1500 psi range, Code 62 Ports, Dual Inlets,	28656-1	29090	29090 RK	29090 SK
2	Valve, Pressure Regulator, GEN 2, Manual Spring, 3500-1500 psi range, SAE Ports, Single Inlet	45200-1*	29091	29091 RK	29091 SK
3	Valve, Pressure Regulator, GEN 2, Manual Spring, 3500-1500 psi range, Seal Sub Mounted, Dual Inlets	60174-8* 170953	29093	29093 RK	29093 SK
4	Valve, Pressure Regulator, GEN 2, Manual Spring, 1500-500 psi range, NPT Ports, Single Inlet	44577* ** 44577-16*	29095	29095 RK	29095 SK
5	Valve, Pressure Regulator, GEN 2, Manual Spring, 3500-1500 psi range, NPT Ports, Single Inlet	44577-1* 45200*	29130	29130 RK	29130 SK
6	Valve, Pressure Regulator, GEN 2, Manual Spring, 3500-1500 psi range, Seal Sub Mounted, RH Single Inlet	60175* 164848	29131	29131 RK	29131 SK
7	Valve, Pressure Regulator, GEN 2, Manual Spring, 5500-2500 psi range, NPT Ports, Single Inlet	45100* ** 45101*	29132	29132 RK	29132 SK
8	Valve, Pressure Regulator, GEN 2, Manual Spring, 5500-2500 psi range, SAE Ports, Single Inlet	45101-1*	29133	29133 RK	29133 SK
9	Valve, Pressure Regulator, GEN 2, Manual Spring, 4500-2000 psi range, Code 62 Ports, Dual Inlets	-	29134	29134 RK	29134 SK

*Gage port improvement from NPT to SAE.

**Handle modified to Lock cap. Exact like for like handle can be created as needed

Note that GEN 2 regulator kits **are not** interchangeable with legacy repair kits and cannot be used in the legacy regulators.

1" GEN2 Pressure Regulator, Manual Spring

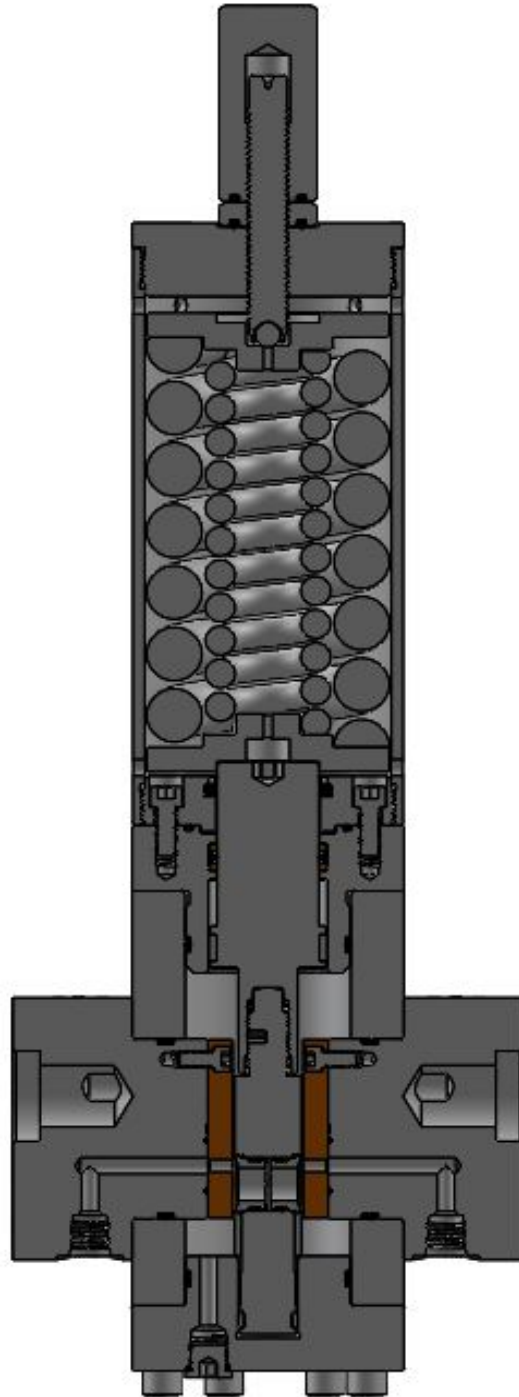
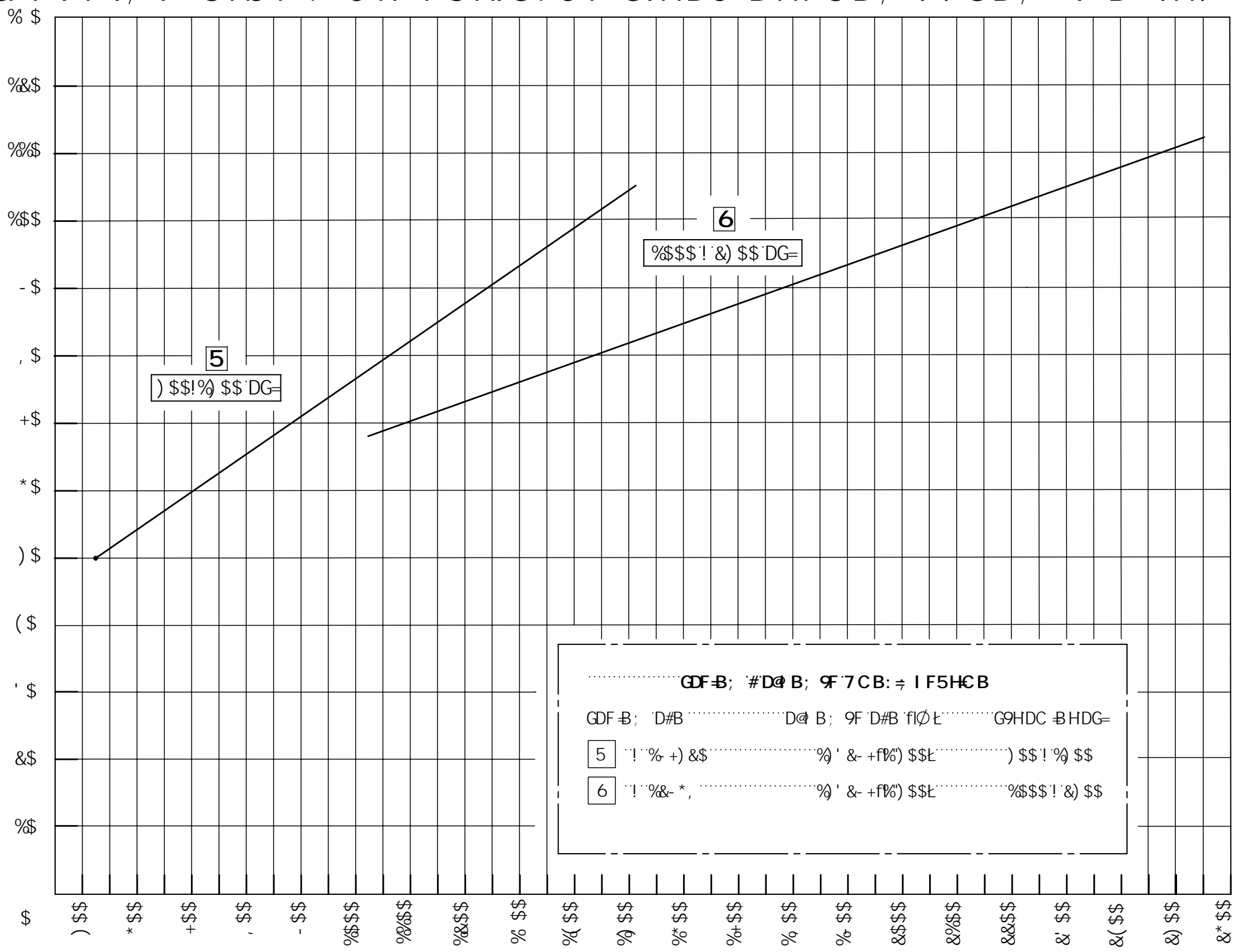


Figure 2. PN 29090: 1" Code 62 GEN 2 Pressure Regulator, Manual Spring, 1-1/2" Outlet, Dual 1" Inlets, 3500 – 1500 psi range

Please contact Gilmore Customer Service to request any drawings, manuals and quotations for these new GEN 2 regulators at info@gilmore.com.

9B & DF 9GGI F9 F9; I @ 5 HC F : @ C K F5 H9G: C F G9HDC BHF5B; 9! GB; @ 9 B @ 9H! \$\$\$ DG=GI DD@M

HMD75@F9, I @ 5 HC F 89A 5B8 7M @9: @ K 7 5D57 HME f[da t
K #K C I H @ H DF 9GG F9 5DDFCL A 5H @ M \$i C: G9HDC BHF



G9HDC BHF5B

BC H9G
%": @ K 7 5D57 H9G5F9 ±%\$i 5B8 65G98 CB: @ B GD97 ÷ 7; F5J HMC: %"\$
&": @ K 7 5D57 H9G5F9 5DDFCL A 5H @ M8C I 6 @ 98 K < 9B HK C B @ 9HG5F9DFC J 898"
" 65G98 CB B @ 9H5B8 F9; I @ 5H98 @ B 9GA9C: %B7 < L < D @ 94 (\$: 99H @ B; "
(" 57H 5 @ GMGHA : @ K F5H9GA 5MJ 5FM"
) " 7 CBG @ HK #K; @ A C F99B; B 99F B; ÷ C D9F5HB; C I HG89HK9 @ 98 G9HDC BHF
" " F5B; 9"

F9J GCBG				
REV	ERN/ECO NUMBER	DRAWN	CHECKED	APPROVED
A	ERN 02366	JOP 6/09/20	<i>CMJ</i> 6-9-20	<i>AJP</i> 6/9/20

A 5H9F 5@	8 A 9BGC BG5B8 HC @ F5B7 9G5F9 B B7 < 9GD9F 5GA 9M() A 1% - (" I B @ GGC H: 9FK @ 9GD97 ÷ 98. %L HC @ F5B7 9G " L: ±% " LL: ±\$% " LLL: ±\$%) 5B: @ G ±") & G F: 57 9H L H F9. ✓	5DDFC J 5@	85H9 6/09/20
7CB8 HCB.	" L: ±% " LL: ±\$% " LLL: ±\$%) 5B: @ G ±") & G F: 57 9H L H F9. ✓	85H9 6-9-20	85H9 6/9/20
HF95HA 9BH	" L: ±% " LL: ±\$% " LLL: ±\$%) 5B: @ G ±") & G F: 57 9H L H F9. ✓	85H9 6/09/20	85H9 6/09/20
DFC 798I F9BI A 69F.	" L: ±% " LL: ±\$% " LLL: ±\$%) 5B: @ G ±") & G F: 57 9H L H F9. ✓	85H9 6/09/20	85H9 6/09/20

9B; B99F B;

; 9B & F9, I @ 5 HC F J 5 @ 9
DI 6 @ G < 98: @ K 7 5D57 H9G

GAP 8K: BC F9J

6 (\$\$* **5**

G7 5 @ %' Gc JK cf_g G<99H % C: '

6

6

5

5

