

**1-1/2" MKIV Shuttle Valve Product Line**

REV	DATE	DESCRIPTION	ORIGIN (issued by)	APPROVED
Rev A	03-01-2019	Document No: 120-030119-001	AP	SS

**COMPANY PROPRIETARY INFORMATION**

Gilmore Technologies, LLC and/or its affiliates (Gilmore). All rights reserved. Gilmore™, Gilmore & Design (Stallion) are registered trademarks or trademarks of Gilmore. This notice and the information contained herein is not to be, in whole or in part, reproduced or transmitted in any form by any means without the express permission of Gilmore. **DISCLAIMER:** Whilst Gilmore has carefully reviewed the contents of this notice and believes the information to be correct, Gilmore does not assume any liability in connection with any use of or reliance upon this information and gives no representation or warranty, express or implied, in respect of the information or any products described herein. This notice is intended for use by persons having suitable technical expertise and skill, at their own discretion and risk. Gilmore may change the information contained herein at any time without notice.

---

**For more information:**

Call (713) 468 8778

Info@gilmore.com

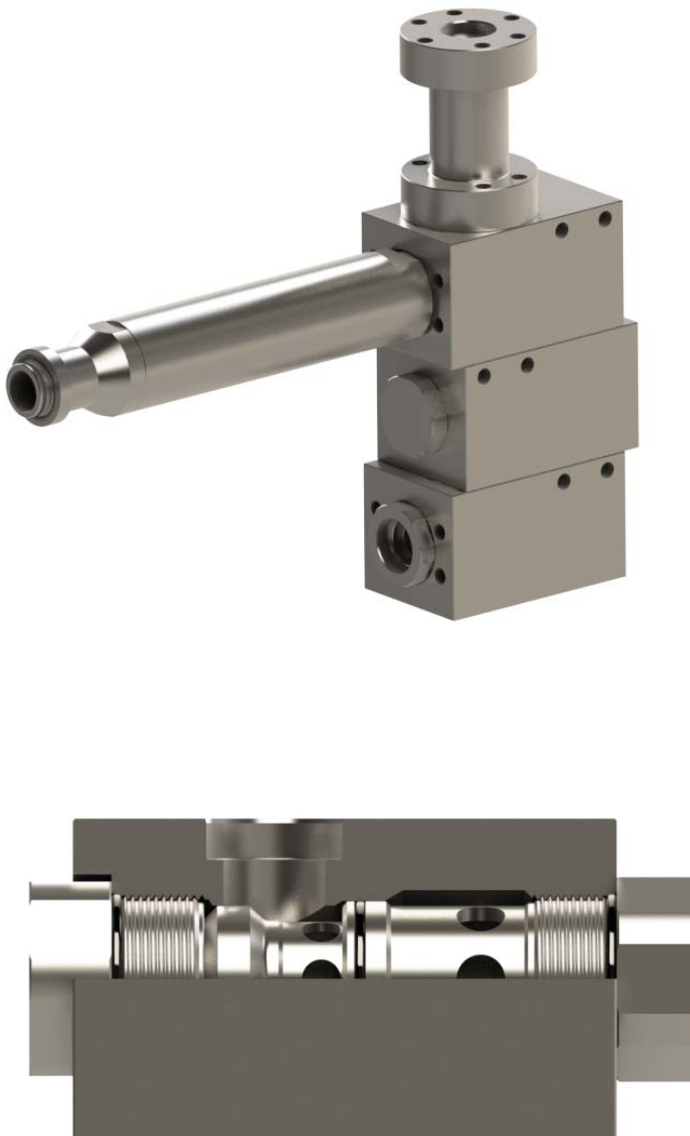
Gilmore  
1231 Lumpkin Road  
Houston, TX 77043

## 1-1/2" MKIV Shuttle Valve Product Line

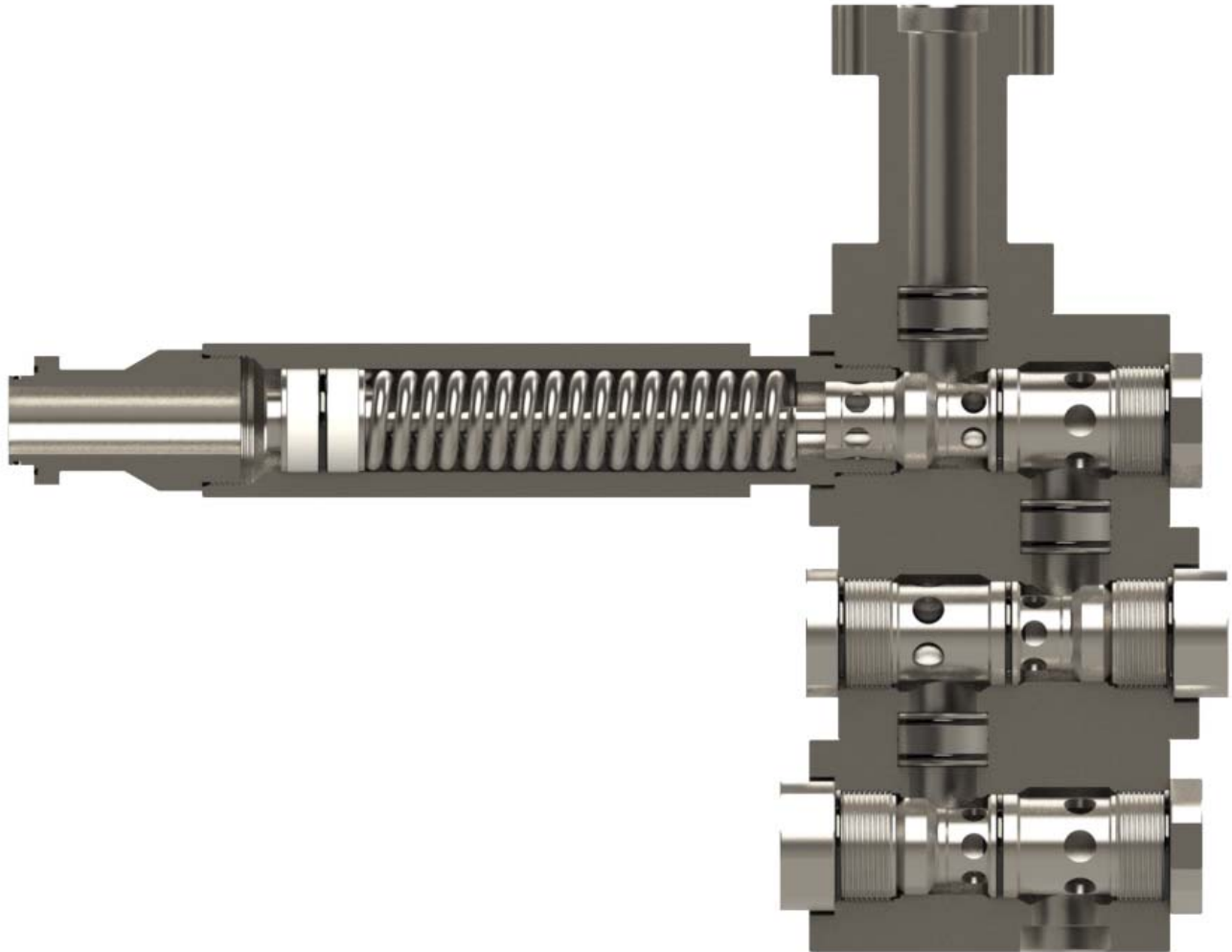
Proserv announces the new Gilmore 1-1/2" Mark IV Shuttle Valve product line for critical offshore and subsea applications. The 1-1/2" Mark IV Shuttle Valve product line establishes a new benchmark for reliability and serviceability in drilling control systems where redundant hydraulic pressure supplies are required.

### Features and Benefits:

- Qualification exceeds API 16D requirements
  - Non Biased shuttle valves qualified to 2500 cycles at maximum flow conditions
  - Pressure and Spring Biased shuttle valves qualified to 1000 cycles at maximum flow conditions
- Shuttle metal seat no longer requires coining, simplifying on-site repairs
- All shuttle styles are hydraulically dampened
- Common stacked bodies can be readily reconfigured
- Fully serviceable shuttles and body seats can be completely redressed inline.
- Available configurations include Pressure biased, Spring biased, high interflow, low interflow, high drag, low drag options with customizable end connections and mounting provisions.
- Customizable single valve and stack valve assemblies available to suit application requirements
- Suitable for panel mounting or direct mounting
- U.S. Patent 9,915,275



**Figure 1. PN 29059: 1-1/2" MKIV Shuttle Valve, Inline, Code 62, Low Interflow, High Drag**



**Figure 2. PN 29063: 1-1/2" MKIV Shuttle Valve, Stack, 4 Inlets, Code 62, Pressure Biased, Low Interflow, High Drag, Adapter**

Proserv has exceeded API 16D requirements by qualifying the new 1-1/2" MKIV Shuttle Valve non-biased designs to multiple endurance qualification tests to 2500 cycles, at a flow rate of 275 gpm – and biased designs to 1000 cycles and 200 gpm – at 5000 psi, with 1% - 4% water glycol test fluid.

The new Proserv Gilmore 1-1/2" MKIV Shuttle Valves are now available for purchase. A few examples of typical assembly configurations are listed below for reference. Proserv Gilmore will create other customized 1-1/2" MKIV Shuttle valve configurations that are required.

Please contact Proserv Customer Service to request a quotation for the 1-1/2" MKIV Shuttle Valves listed below, or other configurations as required.

**Table 1. Examples of New 1-1/2" MKIV Shuttle Valve Part Numbers:**

Item	New Valve Description	Legacy PN Reference	New Valve PN	New Repair Kit PN	New Seal Kit PN
1	Valve, MKIV, 1-1/2", Inline, Code 62, Low Interflow, High Drag	27032-0.3	29059	29059 RK	29059 SK
2	Valve, MKIV, 1-1/2", 90 Deg, Code 62, Low Interflow, High Drag	27024-2.2	29060	29060 RK	29060 SK
3	Valve, MKIV, 1-1/2" Inline, SAE, Pressure Biased, 300 psi Shift	27217	29061	29061 RK	29061 SK
4	Valve, MKIV, 1-1/2" Inline, Code 62, Spring Biased	N/A	29062	29062 RK	29062 SK
5	Valve, MKIV, 1-1/2", Stack, 4 Inlets, Code 62, Pressure Biased, 300 psi Shift, Low Interflow, High Drag, BOP Adapter	28271-4.3	29063	29063 RK	29063 SK
8	Valve, MKIV, 1-1/2", Stack, 5 Inlets, Code 62, Pressure Biased, 300 psi Shift, Low Interflow, High Drag	28283-5.3	29022	29022 RK	29022 SK

Please note at this time Proserv will continue to support the legacy 1-1/2" MKIII Shuttle Valves, which have a different footprint than the new 1-1/2" MKIV Shuttle Valves.