

1" GEN 2 SPM Cartridge & Valve Product Line

REV	DATE	DESCRIPTION	ORIGIN (issued by)	APPROVED
001	05-08-20	Document No.: 105-050820-001	AP	BR

COMPANY PROPRIETARY INFORMATION

Gilmore Technologies, LLC and/or its affiliates (Gilmore). All rights reserved. Gilmore™, Gilmore & Design (Stallion) are registered trademarks or trademarks of Gilmore. This notice and the information contained herein is not to be, in whole or in part, reproduced or transmitted in any form by any means without the express permission of Gilmore. **DISCLAIMER:** Whilst Gilmore has carefully reviewed the contents of this notice and believes the information to be correct, Gilmore does not assume any liability in connection with any use of or reliance upon this information and gives no representation or warranty, express or implied, in respect of the information or any products described herein. This notice is intended for use by persons having suitable technical expertise and skill, at their own discretion and risk. Gilmore may change the information contained herein at any time without notice.

For more information:

Call (713) 468 8778
info@gilmore.com

Gilmore
 1231 Lumpkin Road
 Houston, TX 77043

1" GEN 2 SPM Cartridge & Valve Product Line

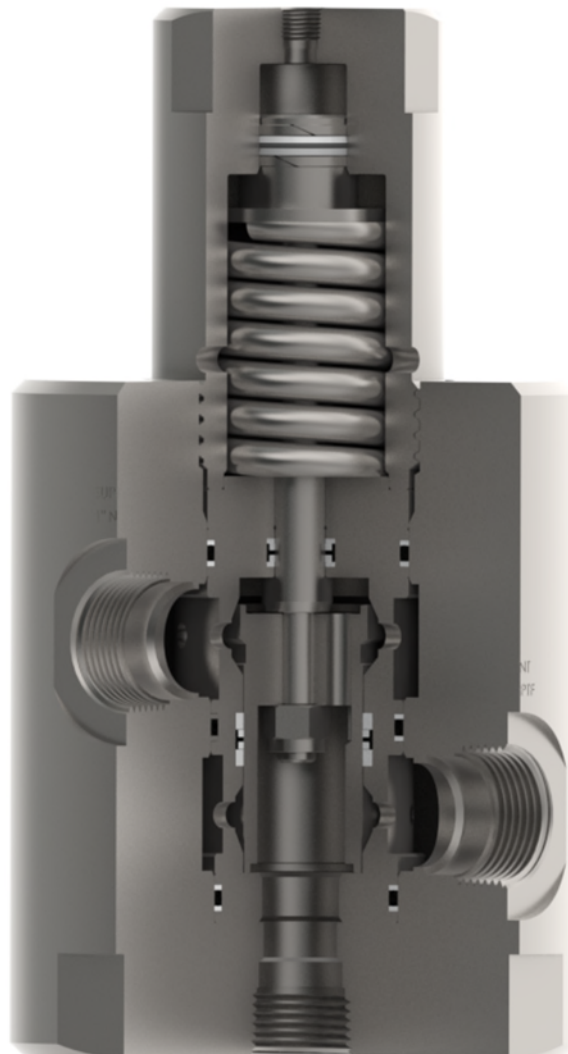


Gilmore announces the new 1" GEN 2 SPM product line for critical offshore and subsea applications. The 1" GEN 2 SPM has been redesigned with significant improvements over its predecessor. The 1" GEN 2 SPM fits within the same cavity & footprint as the legacy SPM, allowing direct replacement in existing Gilmore SPM manifolds. Gilmore's proprietary GEN 2 SPM cartridge technology provides an order of magnitude improvement in cycle life.

Features and Benefits:

- Qualification exceeds API 16D requirements –
 - Two separate full flow tests at 2500 cycles each
- Proprietary bi-directional SPM cartridge performs in both Normally Closed or Normally Open applications
- Reduces interflow
- Reduces pressure spikes
- Improved valve materials:
 - 316 SS Body and Spring
 - Nitronic 50 Piston Rod
 - Nitronic 60 Seal Sleeve and Cage
 - Aluminum Bronze Bushing
 - Shouldered & Torqued Nylon Lock Nut
 - Dynamic T-Seals
 - HNBR Soft Seals with PEEK Double Back-up Rings
 - Delrin 511P Top and Bottom Seats with increased thickness
 - A286 Gr 660 Capscrews
 - Wide array of options available for body & port style, and customized manifolded assemblies
 - Patent Pending

**Figure 1. PN 29109: 1" GEN 2
5000 psi Supply**



SPM Valve, N.C., 1" NPT

Gilmore has exceeded API 16D requirements by qualifying the new 1" GEN 2 SPM designs to multiple endurance qualification tests to 2500 cycles, at 5000 psi and 150 gpm, with 1% - 4% water glycol test fluid.

The new 1" GEN 2 SPM cartridge & valve have the identical cavity and valve footprint dimensions as the Gilmore legacy 1" SPM, allowing simple drop-in replacement to existing installations.

As a result of the new Gilmore 1" GEN 2 SPM product line, please note that new sales of the legacy 1" SPM cartridge and valve part numbers listed below will be discontinued as of May 7, 2021. The new Gilmore 1" GEN 2 SPM cartridge and valves are now available as replacements for the legacy 1" SPM cartridge and valves.



After they are discontinued, Gilmore will continue to support the discontinued legacy 1" SPM product line:

- Gilmore will continue providing repair kits and seal kits in support of discontinued legacy 1" SPM Cartridge and Valves for a minimum of 3 years. The legacy 1" SPM Cartridge and Valves listed below are field repairable.
- Gilmore Aftermarket will continue to support discontinued legacy products with factory failure analysis and repair services for a minimum of 3 years.

Please note that GEN2 repair kits **are not** interchangeable with legacy repair kits and cannot be used in legacy SPMs. Please contact Gilmore Customer Service for any assistance needed while selecting the GEN 2 replacement valve part number.

Table 1. New and Legacy 1 inch SPM Cartridge and Valve Part Number Cross Reference:

Item	Legacy Description	Legacy Valve PN	Legacy Repair Kit PN*	GEN 2 Cartridge or Valve Description	GEN 2 Valve PN
1.1	MVA, 4-Way, 1" SPM, 5000 psi, 1/4 NPT Pilot Port, 1 NPT Block Ports	147581	27168-2 RK 27167-2 RK	MVA, 4-Way, 1" GEN 2 SPM, 5000 psi, 1/4 NPT Pilot Port, 1 NPT Block Ports	29123
1.2	Valve, 1" SPM, N.O., 5000 psi, 1/4 NPT Pilot Port, 1 NPT Block Ports	169129	27168-2 RK	Valve, 1" GEN 2 SPM, N.O., 5000 psi, 1/4 NPT Pilot Port, 1 NPT Block Ports	29111
1.3	Valve, 1" SPM, N.C., 5000 psi, 1/4 NPT Pilot Port, 1 NPT Block Ports	27612-1	27167-2 RK	Valve, 1" GEN 2 SPM, N.C., 5000 psi, 1/4 NPT Pilot Port, 1 NPT Block Ports	29109
1.4	Cartridge, 1" SPM, N.O., 5000 psi, 1/4 NPT Pilot Port	27167-2	27167-2 RK	Cartridge, 1" GEN 2 SPM, N.O. & N.C., 5000 psi, 1/4 NPT Pilot Port	29110
1.5	Cartridge, 1" SPM, N.C., 5000 psi, 1/4 NPT Pilot Port	27168-2	27168-2 RK	Cartridge, 1" GEN 2 SPM, N.O. & N.C., 5000 psi, 1/4 NPT Pilot Port	29110
1.6	Cartridge, 1" SPM, N.O., 5000 psi, 1/4 NPT Pilot Port, Delrin Seats	27167-3	27167-3 RK	Cartridge, 1" GEN 2 SPM, N.O. & N.C., 5000 psi, 1/4 NPT Pilot Port	29110
1.7	Cartridge, 1" SPM, N.C., 5000 psi, 1/4 NPT Pilot Port, Delrin Seats	27168-3	27168-3 RK	Cartridge, 1" GEN 2 SPM, N.O. & N.C., 5000 psi, 1/4 NPT Pilot Port	29110
1.8	Cartridge, 1" SPM, N.O., 5000 psi, 1/4 NPT Pilot Port, Delrin Seats	28478	28478 RK	Cartridge, 1" GEN 2 SPM, N.O. & N.C., 5000 psi, 1/4 NPT Pilot Port	29110
1.10	Cartridge, 1" SPM, N.C., 5000 psi, 1/4 NPT Pilot Port, Delrin Seats	28477	28477 RK	Cartridge, 1" GEN 2 SPM, N.O. & N.C., 5000 psi, 1/4 NPT Pilot Port	29110
1.11	Cartridge, 1" SPM, N.C., 5000 psi, 1/4 SAE Pilot Port	28579	28579 RK	Cartridge, 1" GEN 2 SPM, N.O. & N.C., 5000 psi, 1/4 NPT Pilot Port	29122

*The GEN 2 valve repair kit part number will match the category part numbers with a space and (RK) at the end.

*The GEN 2 valve seal kit part number will match the category part numbers with a space and (SK) at the end.



If a new Gilmore 1-1/2 inch GEN 2 SPM part number is not listed above for a specific legacy part number, please contact Gilmore Customer Service to request a quotation and creation of a new GEN 2 part number.

Please contact Gilmore Customer Service to request drawings and quotations for these SPMs at info@gilmore.com.