



### ½" GEN 2 Check Valve Product Line

REV	DATE	DESCRIPTION	ORIGIN (issued by)	APPROVED
Rev 003	07-13-2021	Corrected part numbers and descriptions on Table 1	AP	BR
Rev 002	02-25-2020	Added Table for ½" POC Throttling Check Valves. Updated parts assembly	SD	BR
Rev 001	09-26-2016	100-092616-001	CY	BR

#### COMPANY PROPRIETARY INFORMATION

Gilmore Technologies, LLC and/or its affiliates (Gilmore). All rights reserved. Gilmore™, Gilmore & Design (Stallion) are registered trademarks or trademarks of Gilmore. This notice and the information contained herein is not to be, in whole or in part, reproduced or transmitted in any form by any means without the express permission of Gilmore. **DISCLAIMER:** Whilst Gilmore has carefully reviewed the contents of this notice and believes the information to be correct, Gilmore does not assume any liability in connection with any use of or reliance upon this information and gives no representation or warranty, express or implied, in respect of the information or any products described herein. This notice is intended for use by persons having suitable technical expertise and skill, at their own discretion and risk. Gilmore may change the information contained herein at any time without notice.

---

#### For more information:

Call (713) 468 8778  
[Info@gilmore.com](mailto:Info@gilmore.com)

Gilmore  
 1231 Lumpkin Road  
 Houston, TX 77043



### 1/2" GEN 2 Check Valve Product Line

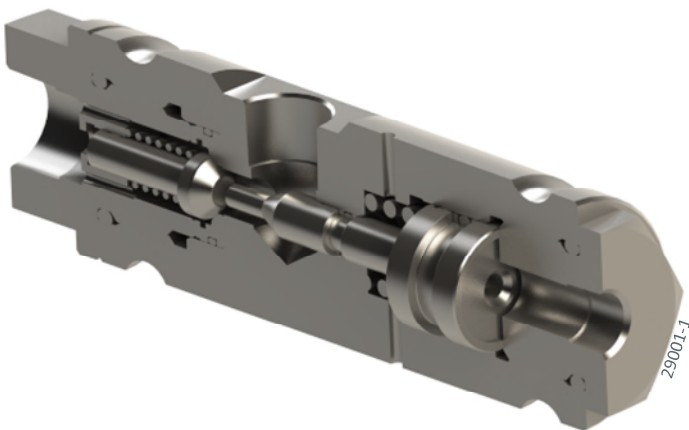
Gilmore announces the new 1/2 inch GEN 2 Pilot Operated Check Valve (POCV) product line for critical offshore and subsea applications. The 1/2 inch GEN 2 POCV has been redesigned with significant improvements.

#### Features and Benefits:

- Qualification exceeds API 16D requirements
  - Two separate endurance tests at 2500 cycles each
  - Hyperbaric Chamber test to 100 cycles at 15000 ft depth
- Nitronic 60 Poppet style check mechanism for improved guidance
- One-piece Nitronic 60 piston with Elgiloy springs
- 316 SS body
- Nitronic 60 End Caps
- Delrin 511P check valve seat
- HNBR O-rings with PEEK double back-up rings
- Ability to be field serviced without need for special tools
- Non-piloted Check Valve versions also available



Figure 1 and 2. PN 29001-1: 1/2" NPT Pilot Operated Check Valve, External Vent and Cross-section



Gilmore has exceeded API 16D requirements by qualifying the new 1/2" GEN 2 Check Valve design to multiple endurance qualification cycle tests to 2500 cycles, at a starting flow rate of 15 gpm at 5000 psi, with a 1% - 4% water glycol test fluid.



# Gilmore

www.gilmore.com

As a result of the new Gilmore 1/2" Check Valve product line, please note that sales of all legacy 1/2" Check Valve part numbers listed below were discontinued on September 29th, 2017. The new Gilmore 1/2" Check Valves are now available for purchase as replacements for the legacy Check Valves. Note GEN 2 repair kits **are not** usable in legacy check valves.

Gilmore will continue to support discontinued legacy 1/2" Check Valves:

- Gilmore will continue providing repair kits, seal kits and conversion kits in support of discontinued 1/2" Check Valves for a minimum of 3 years. The Gilmore 1/2" Check Valves listed below are field repairable.
- Gilmore Aftermarket will continue to support discontinued legacy products with factory failure analysis and repair services for a minimum of 3 years.

**Table 1. Legacy and New 1/2" GEN 2 Check Valve Part Numbers:**

Item	Legacy Description	Legacy Valve PN	Legacy Repair Kit PN	New Valve Description	New Valve PN	New Repair Kit PN
1	Conversion Kit, Adapter Retainer, Valve, Check, Pilot Operated, External Vent, 1/2" NPT	100710	NA	Valve, Check, Pilot Operated, External Vent, 1/2" NPT	29001-1	29001-1 RK
2	Conversion Kit, Adapter Retainer, Valve, Check, Pilot Operated, External Vent, 1/2" SAE	131257	131283	Valve, Check, Pilot Operated, External Vent, 1/2" SAE	29001-3	29001-3 RK
3	Valve, Check, Pilot Operated, External Vent, 1/2" NPT	22720-1	22720-1 RK	Valve, Check, Pilot Operated, External Vent, 1/2" NPT	29001-1	29001-1 RK
4	Valve, Check, Pilot Operated, External Vent, 1/2" NPT	22720-3	22720-3 RK	Valve, Check, Pilot Operated, External Vent, 1/2" NPT	29001-1	29001-1 RK
5	Valve, Check, Pilot Operated, External Vent, 1/2" NPT	22720-5	22720-5 RK	Valve, Check, Pilot Operated, External Vent, 1/2" NPT	29001-1	29001-1 RK
6	Valve, Check, Pilot Operated, External Vent, 1/2" SAE	22720-6	22720-6 RK	Valve, Check, Pilot Operated, External Vent, 1/2" SAE	29001-3	29001-3 RK
7	Valve, Check, Pilot Operated, External Vent, 1/2" SAE	22724	22724 RK	Valve, Check, Pilot Operated, External Vent, 1/2" SAE	29001-3	29001-3 RK
8	Valve, Check, Pilot Operated, External Vent, 1/2" SAE	22724-1	22724-1 RK	Valve, Check, Pilot Operated, External Vent, 1/2" SAE	29001-3	29001-3 RK
9	Valve, Check, Pilot Operated, Internal Vent, 1/2" NPT	22440-1	22440-1 RK	Valve, Check, Pilot Operated, Internal Vent, 1/2" NPT	29001-2	29001-2 RK
10	Valve, Check, Pilot Operated, Internal Vent, 1/2" NPT	22440-2	22440-2 RK	Valve, Check, Pilot Operated, Internal Vent, 1/2" NPT	29001-2	29001-2 RK
11	Valve, Check, Pilot Operated, Internal Vent, 1/2" NPT	22440-3	22440-3 RK	Valve, Check, Pilot Operated, Internal Vent, 1/2" NPT	29001-2	29001-2 RK
12	Valve, Check, Pilot Operated, External Vent, 1/2" NPT	25108	25108 RK	Valve, Check, Pilot Operated, External Vent, 1/2" NPT	29001-1	29001-1 RK
13	Valve, Check, Pilot Operated, External Vent, 1/2" NPT	25108-1	25108-1 RK	Valve, Check, Pilot Operated, External Vent, 1/2" NPT	29001-1	29001-1 RK



Item	Legacy Description	Legacy Valve PN	Legacy Repair Kit PN	New Valve Description	New Valve PN	New Repair Kit PN
14	Valve, Check, Non-Piloted, 1/2" SAE	New PN	New PN	Valve, Check, Non-Piloted, 1/2" SAE	29000-2	29000-2 RK
15	Valve, Check, Non-Piloted, 3/8" NPT	25105	25105 RK	Valve, Check, Non-Piloted, 1/2" NPT	29000-1	29000-1 RK
16	Valve, Check, Non-Piloted, 1/2" NPT	25125	25125 RK	Valve, Check, Non-Piloted, 1/2" NPT	29000-1	29000-1 RK

Gilmore has additionally released a throttling 1/2" GEN 2 POCV designed to handle 5000 psi full differential pressure.

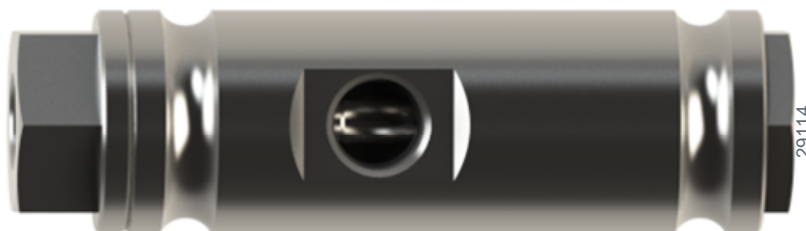


Figure 3 and 4.\* PN 29114: 1/2" NPT GEN 2 Piloted Throttling Check Valve and Cross-section



\*The throttled seat cap within PN 29114 ensures POCV integrity while managing full 5000 psi pressure differential.

Table 2. Legacy GEN 2 Piloted Throttling Check Valve Part Numbers

Item	Legacy Description	Legacy Valve PN	Legacy Repair Kit PN	New Valve Description	New Valve PN	New Repair Kit PN
1	N/A	N/A	N/A	Valve, Check, Throttling, Piloted, 1/2" NPTF 5000 PSI, Internal Vent	29114	29114 RK
2	N/A	N/A	N/A	Valve, Check Throttling, Piloted 1/2" SAE, 5000 PSI, Internal Vent	29064	29064 RK

**Table 3. Legacy Check Valve Part Numbers**

Item	Legacy Description	Legacy Valve PN	Legacy Repair Kit PN	New Valve Description	New Valve PN	New Repair Kit PN
1	Valve, Check, Pilot Operated, Internal Vent, 1/2" BSPP	22440-4	22440-4 RK	N/A	N/A	N/A
2	Valve, Check, Pilot Operated, Captured Vent, 1/2" NPT	22720-4	22720-4 RK	N/A	N/A	N/A
3	Valve, Check, Pilot Operated, External Vent, 1/2" NPT	25109	25109 RK	N/A	N/A	N/A
4	Valve, Check, Non-Piloted, 1/2" BSPP	25125-1	25125-1 RK	N/A	N/A	N/A
5	Valve, Check, Air Dome, External Vent, 1/2" NPT	25132	25132 RK	N/A	N/A	N/A
6	Valve, Check, Well Bore Assisted, 1/2" NPT	25158	25158 RK	N/A	N/A	N/A
7	Valve, Check, 3/8" NPT Pilot, External Vent, 1/2" NPT	28350	28350 RK	N/A	N/A	N/A

Gilmore will continue supporting these legacy valves through repair kits, seal kits and aftermarket support for a minimum of 3 years.