

Figure 1. PN 29010: GEN2 Quick Dump Valve

## Features and benefits

- Qualification exceeds API 16D requirements
  - Two separate endurance tests at 2500 cycles each
- Improved valve materials:
  - Nitronic 60 spool with self-centering metal seat geometry
  - Nitronic 60 Poppet
  - Nitronic 60 Seat with O-Ring seal for field repair
  - Passivation of all metal items
- Function ratio:
  - <1:2
- Available configurations:
  - 1/2" NPT, 1/2" SAE, Same footprint as legacy Gilmore 1/2" Quick Dump Valve

## Provides control systems means for quick actuation by redirecting fluid path restrictions.

Gilmore's line of 1/2" GEN2 Quick Dump Valves provides fast, reliable dumping of cylinder, pilot, or circuit function volumes in subsea control systems, including subsea riser connectors.

### FUNCTIONAL DESIGN SPECIFICATIONS (1/2")

Maximum Allowable Working Pressure	5000 PSI
Poppet Cracking Pressure	80 ±20 PSI
Recommended Maximum Operating Flow	20 GPM Forward/40 GPM Reverse
Flow Coefficient (Cv-Calculated)	.8 (S-F), 2.8 (F-V)
Qualified Life Cycle	2500 Cycles
Operating Temperature Range	32° F to 150° F
Acceptable Operating Fluid Types	Water or mineral oil-based drilling control fluid
Mounting Restrictions	None
US Patent	6,779,543
Maximum Operating Depth	15,000 ft

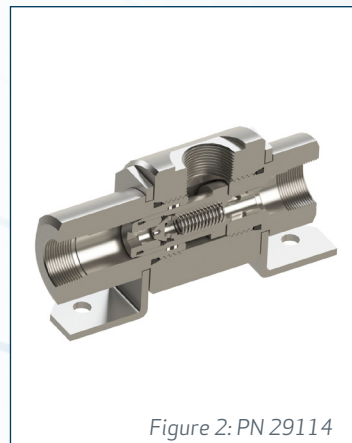


Figure 2: PN 29114, GEN2 Quick Dump Valve

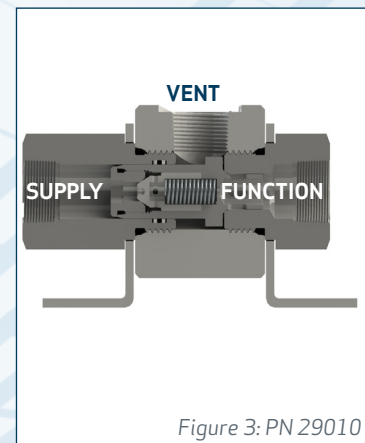


Figure 3: PN 29010, GEN2 Quick Dump Valve; The valve shifts to vent position when the supply pressure is less than half the function pressure.

Figure 2: PN 29114, GEN2 Quick Dump Valve  
 Figure 3: PN 29010, GEN2 Quick Dump Valve; The valve shifts to vent position when the supply pressure is less than half the function pressure.