



Product Information Bulletin (PIB)

1/2" GEN2 Pressure Regulator, 10 ksi

REV	DATE	DESCRIPTION	ORIGIN (issued by)	APPROVED
Rev 001	05/25/22	Document No: 135-052522-001	AP	BR

**COMPANY PROPRIETARY INFORMATION**

© Proserv Gilmore Valve, LLC and/or its affiliates (Gilmore). All rights reserved. Proserv®, Gilmore™, Gilmore & Design (Stallion) are registered trademarks or trademarks of Gilmore. This notice and the information contained herein is not to be, in whole or in part, reproduced or transmitted in any form by any means without the express permission of Gilmore. **DISCLAIMER:** Whilst Gilmore has carefully reviewed the contents of this notice and believes the information to be correct, Gilmore does not assume any liability in connection with any use of or reliance upon this information and gives no representation or warranty, express or implied, in respect of the information or any products described herein. This notice is intended for use by persons having suitable technical expertise and skill, at their own discretion and risk. Gilmore may change the information contained herein at any time without notice.

---

**For more information:**

Call (800) 469-8786  
info@gilmore.com

Gilmore  
1231 Lumpkin Road  
Houston, TX 77043

## 1/2" GEN2 Pressure Regulator, 10 ksi

Gilmore announces the new 1/2" GEN2 10 ksi Pressure Regulator, with Manual Spring and Hydraulic Pilot options.

With Tungsten Carbide shear seal trim and internal damping, this new 10,000 psi supply regulator product line provides the utmost reliability for critical pressure regulating applications.

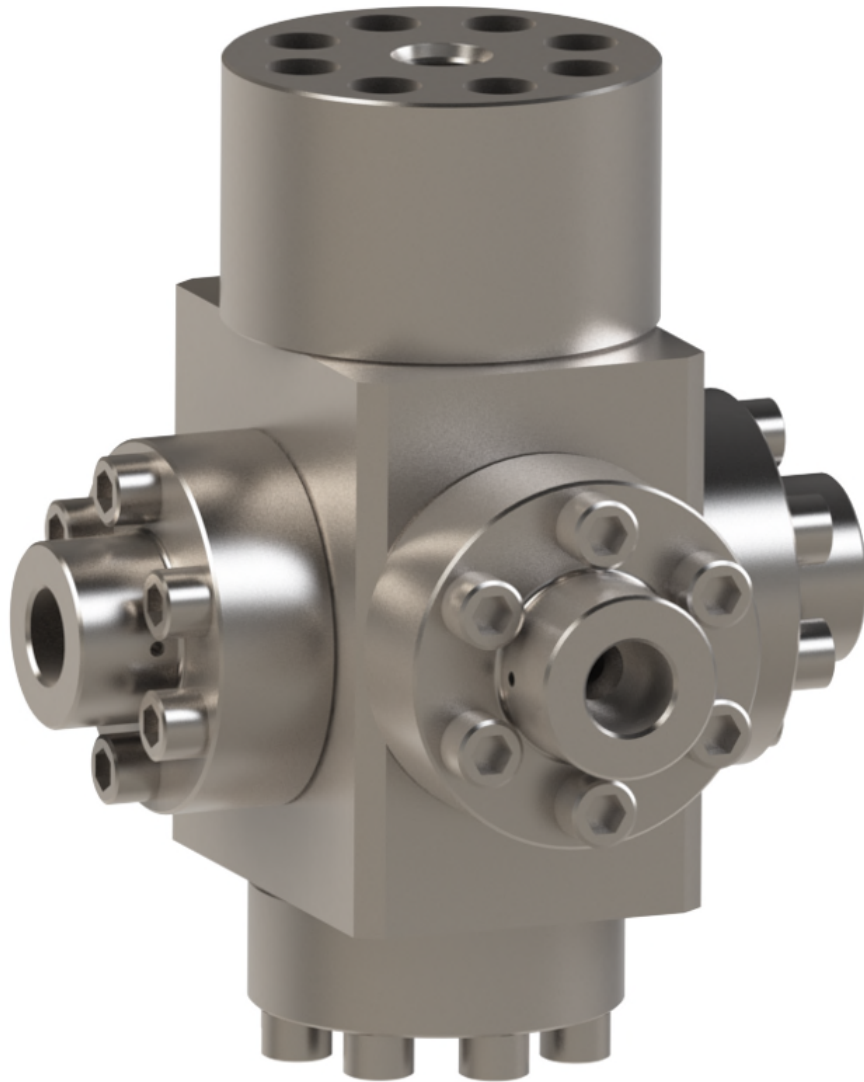
### Features and Benefits:

- Qualification exceeds API 16D requirements –
  - 7,500 endurance cycles
  - Hyperbaric Chamber Testing to 15,000 ft water depth
- Proprietary guided hydraulic dampening technology
- Low deadband performance
- Tungsten Carbide seal trim
- Inconel X-750 Compression Springs
- Dynamic Plunger T-Seal
- 17-4 H1150D & T316 Body & Flanges
- Nitronic 60 Seal Container & Plunger Guide



Figure 1 PN 29197: 1/2" GEN2 Pressure Regulator, 10 ksi, Manual Spring, 9/16" MP ports, 8000 – 4000 psi range

**1/2" GEN2 Pressure Regulator, 10 ksi**



**Figure 2 PN 29193: 1/2" GEN2 Pressure Regulator, 10 ksi, Hyd Pilot, 9/16" MP ports, 8000 – 1000 psi range**

## 1/2" GEN2 Pressure Regulator, 10 ksi

Gilmore has exceeded API 16D requirements by qualifying the new Gilmore 1/2" GEN2 Pressure Regulator 10 ksi designs to 7,500 cycles, at a starting flow rate of 20 gpm, at 10 ksi inlet pressure, with 1% - 4% water glycol test fluid. Hyperbaric testing at an equivalent depth of 15,000 feet has been completed.

The new Gilmore 1/2" GEN2 10 ksi Pressure Regulators are now available for purchase. A few examples of typical assembly configurations are listed below for reference. Gilmore will create other customized 1/2" GEN2 10 ksi Pressure Regulator configurations that are required.

Please contact Gilmore Customer Service to request a quotation for the 1/2" GEN2 10 ksi Pressure Regulator listed below, or other custom configurations as required.

**Table 1. New 1/2" GEN2 10ksi Pressure Regulators:**

Item	New Valve Description	New Valve PN	New Repair Kit PN	New Seal Kit PN
1	Valve, Pressure Regulator, GEN2, 10 ksi, Manual Spring, 6000-3000 psi range, 9/16" MP Ports	29192	29192 RK	29192 SK
2	Valve, Pressure Regulator, GEN2, 10 ksi, Hyd Pilot, 8000-1000 psi range, 9/16" MP Ports	29193	29193 RK	29193 SK
3	Valve, Pressure Regulator, GEN2, 10 ksi, Manual Spring, 8000-4000 psi range, 9/16" MP Ports	29197	29197 RK	29197 SK

Please contact Gilmore Customer Service to request any drawings and quotations for these new GEN2 Regulators at [Info@gilmore.com](mailto:Info@gilmore.com).