

1-1/2" GEN2 V-Seal Shuttle Valve

REV	DATE	DESCRIPTION	ORIGIN (issued by)	APPROVED
REV 001	1/19/22	Document No: 120-011922-001	AP	GM

COMPANY PROPRIETARY INFORMATION

© Proserv Gilmore Valve, LLC and/or its affiliates (Gilmore). All rights reserved. Proserv®, Gilmore™, Gilmore & Design (Stallion) are registered trademarks or trademarks of Gilmore. This notice and the information contained herein is not to be, in whole or in part, reproduced or transmitted in any form by any means without the express permission of Gilmore. **DISCLAIMER:** Whilst Gilmore has carefully reviewed the contents of this notice and believes the information to be correct, Gilmore does not assume any liability in connection with any use of or reliance upon this information and gives no representation or warranty, express or implied, in respect of the information or any products described herein. This notice is intended for use by persons having suitable technical expertise and skill, at their own discretion and risk. Gilmore may change the information contained herein at any time without notice.

For more information:

Call (800) 469-8786

Info@gilmore.com

Gilmore
1231 Lumpkin Road
Houston, TX 77043

1-1/2" GEN2 V-Seal Shuttle Valve

Gilmore announces the new 1-1/2" GEN2 V-Seal Shuttle Valve product line for critical offshore and subsea applications. The 1-1/2" GEN2 V-Seal Shuttle Valve has been designed with the same footprint as the legacy Traditional Shuttle Valve for easy drop-in replacement. Gilmore's proprietary dynamic V-Seal technology provides an order of magnitude improvement in valve cycle life.

Features and Benefits:

- Qualification exceeds API 16D requirements
 - Two separate full flow tests at 2500 cycles each
- Proprietary V-Seal and hydraulic damped technology which does not feather or extrude
- Designed and tested to meet 5-year maintenance free service under normal operating conditions
- Improved Valve Materials:
 - 316 SS Body and Flanges
 - Nitronic 60 Shuttle, Sleeve and Cap
 - PEEK Spacer
 - PTFE/Nitrile 90 Duro V-Seal
 - A-286 Cap Screws with T316 Nordlock Washers

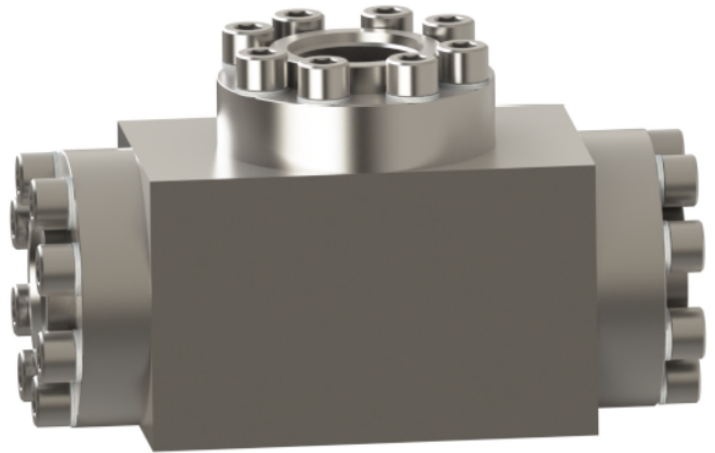


Figure 1. PN 29181: 1-1/2" SAE V-Seal GEN2 Shuttle Valve, 5000 psi, Low interflow

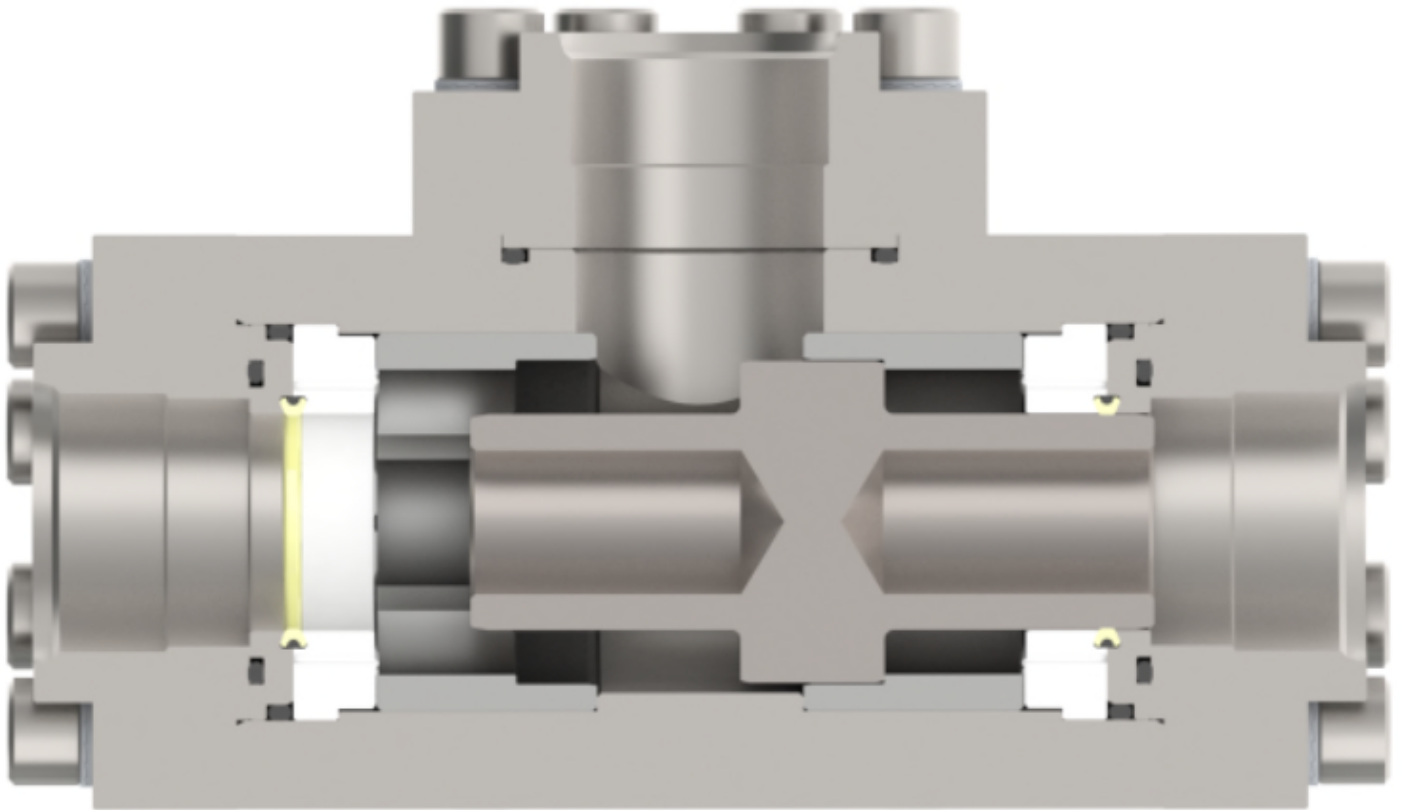


Figure 2. PN 29181: 1-1/2" SAE V-Seal Shuttle Valve, 5000 psi, Low Interflow

1-1/2" GEN2 V-Seal Shuttle Valve

Gilmore has exceeded API 16D requirements by qualifying the new 1-1/2" GEN2 V-Seal Shuttle Valve designs to multiple endurance qualification tests to 2500 cycles, at a starting flow rate of 250 gpm at 5000 psi, with 1% - 4% water glycol test fluid.

The new Gilmore 1-1/2" GEN2 V-Seal Shuttle Valves have an identical footprint to the legacy valves for simple retrofitting.

As a result of the new Gilmore 1-1/2" GEN2 V-Seal Shuttle Valve product line, please note that sales of the legacy 1-1/2" Traditional Shuttle Valve part numbers listed below will be discontinued as of February 1st, 2023. The new Gilmore 1-1/2" GEN2 V-Seal Shuttle Valve is now available as a replacement for the legacy 1-1/2" Traditional Shuttle Valves.

After they are discontinued, Gilmore will continue to support the obsoleted legacy 1-1/2" Traditional Shuttle Valve product line by providing repair kits and seal kits for discontinued 1-1/2" Traditional Shuttle Valves as required for field service. Additionally, Gilmore Aftermarket will continue to support discontinued legacy products with factory failure analysis and repair services as required.

Please note that GEN2 repair kits **are not** interchangeable with legacy repair kits and cannot be used in legacy Traditional Shuttle Valves. Please contact Gilmore Customer Service to assist you with selecting GEN2 replacement valve part numbers.

Table 1. New and Legacy 1-1/2" Shuttle Valve Part Numbers:

Item	Legacy Description	Legacy Valve PN	Legacy Repair Kit PN	New Valve Description	New Valve PN	New Repair Kit PN
1	Valve, 1-1/2", Shuttle, Traditional, 2" Code 62, High Interflow, 5000 psi	28370	28370 RK	Valve, 1-1/2", Shuttle, Gen 2, 2" Code 62, High Interflow, 5000 psi	29180	29180 RK
2	Valve, 1-1/2", Shuttle, Traditional, 1-1/2" SAE, Low Interflow, 5000 psi	25428	25428 RK	Valve, 1-1/2", Shuttle, Gen 2, 1-1/2" SAE, Low Interflow, 5000 psi	29181	29181 RK
3	Valve, 1-1/2", Shuttle, Traditional, 1-1/2" SAE, High Interflow, 5000 psi	25428-1	25428-1 RK	Valve, 1-1/2", Shuttle, Gen 2, 1-1/2" SAE, High Interflow, 5000 psi	29182	29182 RK
4	Valve, 1-1/2", Shuttle, Traditional, 1-1/2" NPT, Low Interflow, 5000 psi	25414	25414 RK	Valve, 1-1/2", Shuttle, Gen 2, 1-1/2" NPT, Low Interflow, 5000 psi	29183	29183 RK
5	Valve, 1-1/2", Shuttle, Traditional, 1-1/2" NPT, High Interflow, 5000 psi	25430	25430 RK	Valve, 1-1/2", Shuttle, Gen 2, 1-1/2" NPT, High Interflow, 5000 psi	29184	29184 RK
6	Valve, 1-1/2", Shuttle, Traditional, 1-1/2" Code 62, Low Interflow, 5000 psi	27405	27405 RK	Valve, 1-1/2", Shuttle, Traditional, 1-1/2" Code 62, Low Interflow, 5000 psi	29191	29191 RK
7	Valve, 1-1/2", Shuttle, Traditional, 2" Code 62, Low Interflow, 5000 psi	28189	28189 RK	Valve, 1-1/2", Shuttle, Gen 2, 2" Code 62, Low Interflow, 5000 psi	29190	29190 RK

Please contact Gilmore Customer Service to request drawings and quotations for these new GEN2 shuttle valves at Info@gilmore.com.

NOTES:

- 1 MARKING: MARK COMPONENT WITH ASSEMBLY W.O. AS SHOWN ON THE COMPONENT DRAWING
- 2 MARK AS SHOWN USING LASER ETCH OR COMPUTER CONTROLLED DOT PEEN MARKING MACHINE, .06 HIGH MIN CHARACTERS.
- 3 "X" IN COLUMN RK DENOTES PARTS CONTAINED IN REPAIR KIT 29180 RK
- 4 "X" IN COLUMN SK DENOTES PARTS CONTAINED IN SEAL KIT 29180 SK
- 5 APPLY LOCTITE 243 (BLUE) AND TORQUE ITEM 8 CAP SCREWS AT ASSEMBLY TO 50 FT-LBS.
- 6 ALL MANUFACTURED ITEMS ARE PASSIVATED.
- 7 ASSEMBLY PROCEDURE: 50346
SERVICE MANUAL: 51039
STANDARD FAT: 50347
EXTENDED FAT: 50348

REVISIONS

REV	ERN /ECO NUMBER	DRAWN	CHECKED	APPROVED
A	ERN 02502	CMJ 6-7-21	RV 6/7/21	AJP 6/7/21

PRESSURE DATA

MAX WORKING PRESSURE: 5,000 PSI

PORTS

INLETS: 2" CODE 62

OUTLET: 2" CODE 62

FLOW DATA

MAX FLOW CAPACITY: 250 GPM

C_v: 18

MINIMUM SHIFT FLOW: 10 GPM

GENERAL DATA

APPROX WEIGHT: 66.5 LBS

TEMPERATURE: 32 °F TO 150 °F

FLUIDS: - WATER BASED DRILLING

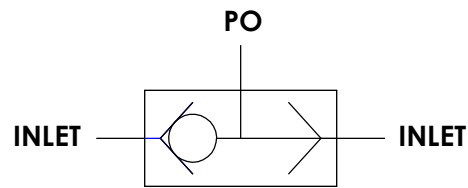
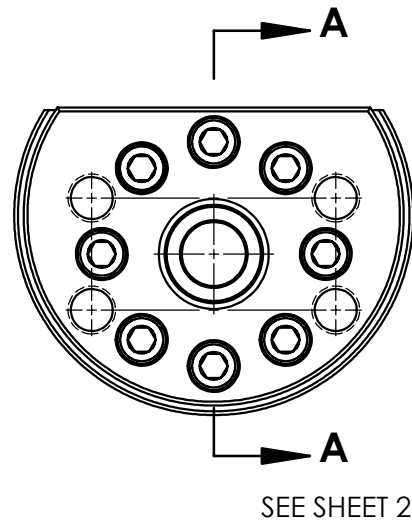
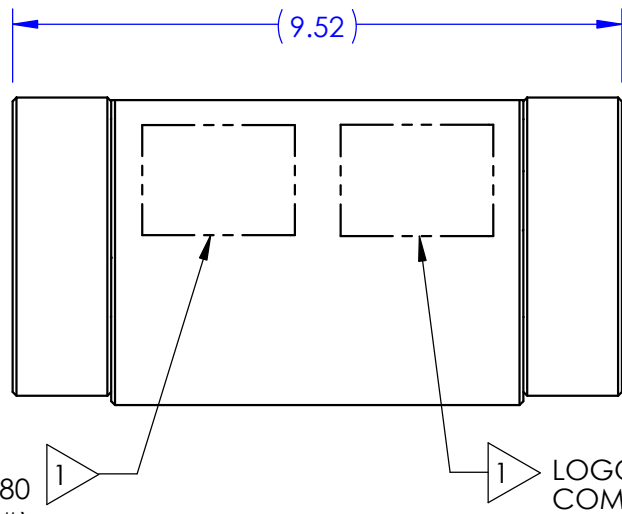
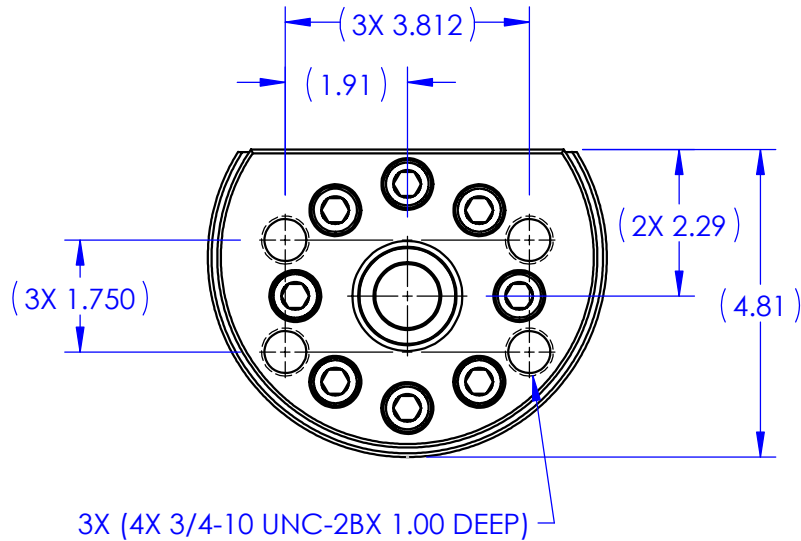
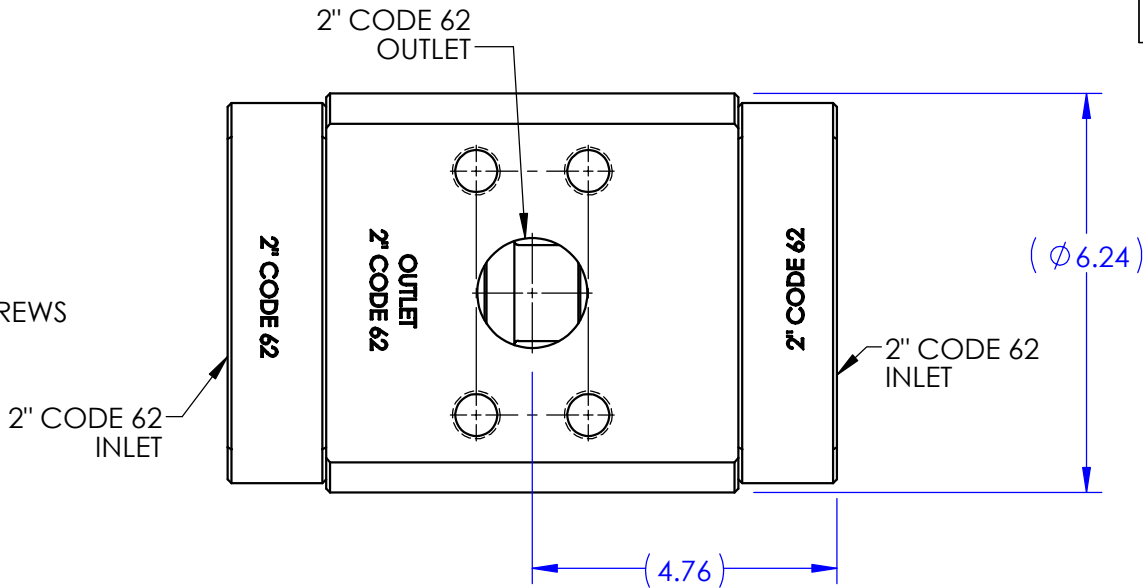
CONTROL FLUID.

- MINERAL OIL BASED DRILLING

CONTROL FLUID.

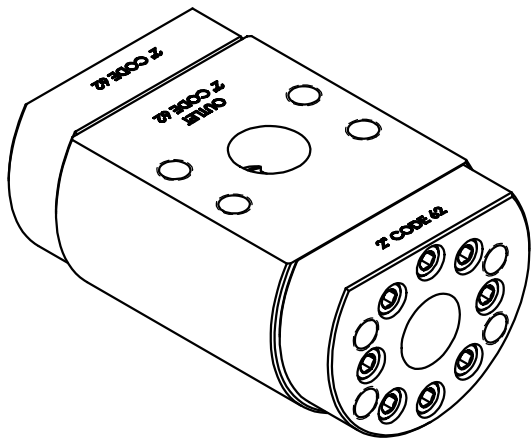
FIELD SERVICEABLE, REPAIR KITS AVAILABLE

RECOMMENDED INSTALLED POSTION IS
HORIZONTAL CENTERLINE, A VERTICAL
CENTERLINE WILL INCREASE MINIMUM
SHIFT FLOW REQUIRED AND GRAVITY MAY
CAUSE SHUTTLE TO MOVE TO LOWEST
POSITION



SCHEMATIC

US PATENT 9,719,600



29180
VER (AX VERSION #)
(SERIAL NUMBER)
PATENT 9,719,600
5,000 PSI
(DATE OF MFG)
SEE SHOP TRAVELER
FOR ADDITIONAL
INFO REQUIRED

MATERIAL:
REFER TO INDIV
BOM ITEMS

CONDITION:

TREATMENT:

PROCEDURE NUMBER:

7

DIMENSIONS AND TOLERANCES ARE
IN INCHES PER ASME Y14.5M-1994.
UNLESS OTHERWISE SPECIFIED:

1) TOLERANCES: .X: ±.1
.XX: ±.01
.XXX: ±.005
ANGLES: ±.5°

2) SURFACE TEXTURE: 63/

3) CORADIAL FEATURES SHALL BE ©
WITHIN .010

4) BREAK SHARP EDGES .010

5) INTERNAL RADII SHALL BE .016 MAX

6) DRILL POINTS OPTIONAL WHEN SHOWN
UNSPECIFIED, ALL DRILL POINT ANGLES
SHALL BE BETWEEN 90°-140°

APPROVAL

DRAWN BY	CMJ	DATE	6-7-21
CHECKED BY	RV	DATE	6/7/21
ENGINEER	AJP	DATE	6/7/21
ERN NUMBER	02502	DATE	5-7-21

THE INFORMATION CONTAINED IN THIS DRAWING IS THE
SOLE PROPERTY OF GILMORE VALVE CO UNLESS OTHERWISE
STATED. ANY REPRODUCTION IN PART OR WHOLE WITHOUT
THE WRITTEN PERMISSION OF GILMORE VALVE CO IS PROHIBITED.



ENGINEERING

VALVE, SHUTTLE, 1-1/2", GEN 2
2" CODE 62, HIGH INTERFLOW
5000 PSI

SIZE
B

DWG NO

29180

REV
A

SCALE 1:3

SolidWorks

SHEET 1 OF 2

1



A

1

NOTES:

- 1 MARKING: MARK COMPONENT WITH ASSEMBLY W.O. AS SHOWN ON THE COMPONENT DRAWING
- 2 MARK AS SHOWN USING LASER ETCH OR COMPUTER CONTROLLED DOT PEEN MARKING MACHINE, .06 HIGH MIN CHARACTERS.
- 3 "X" IN COLUMN RK DENOTES PARTS CONTAINED IN REPAIR KIT 29181 RK
- 4 "X" IN COLUMN SK DENOTES PARTS CONTAINED IN SEAL KIT 29181 SK
- 5 APPLY LOCTITE 243 (BLUE) AND TORQUE ITEM 8 CAP SCREWS AT ASSEMBLY TO 50 FT-LBS.
- 6 ALL MANUFACTURED ITEMS ARE PASSIVATED.
- 7 ASSEMBLY PROCEDURE: 50346
SERVICE MANUAL: 51039
STANDARD FAT: 50347
EXTENDED FAT: 50348

REVISIONS

REV	ERN /ECO NUMBER	DRAWN	CHECKED	APPROVED
A	ERN 02502	CMCJ 6-7-21	RV 6/7/21	AJP 6/7/21

PRESSURE DATA

MAX WORKING PRESSURE: 5,000 PSI

PORTS

INLETS: 1-1/2" SAE

OUTLET: 1-1/2" SAE

FLOW DATA

MAX FLOW CAPACITY: 250 GPM

C_v: 18

MINIMUM SHIFT FLOW: 1 GPM

GENERAL DATA

APPROX WEIGHT: 50.5 LBS

TEMPERATURE: 32 °F TO 150 °F

FLUIDS: - WATER BASED DRILLING

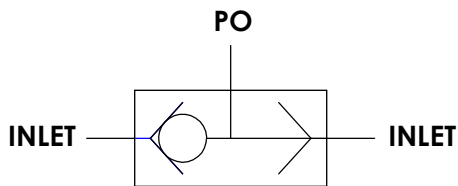
CONTROL FLUID.

- MINERAL OIL BASED DRILLING

CONTROL FLUID.

FIELD SERVICEABLE, REPAIR KITS AVAILABLE

RECOMMENDED INSTALLED POSTION IS HORIZONTAL CENTERLINE, A VERTICAL CENTERLINE WILL INCREASE MINIMUM SHIFT FLOW REQUIRED AND GRAVITY MAY CAUSE SHUTTLE TO MOVE TO LOWEST POSITION



SCHEMATIC

US PATENT 9,719,600



ENGINEERING

VALVE, SHUTTLE, 1-1/2", GEN 2
1-1/2 SAE, LOW INTERFLOW,
5000 PSI

SIZE
B

DWG NO

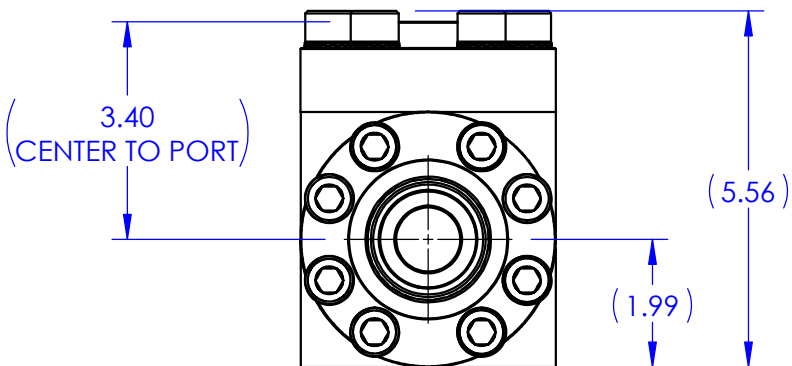
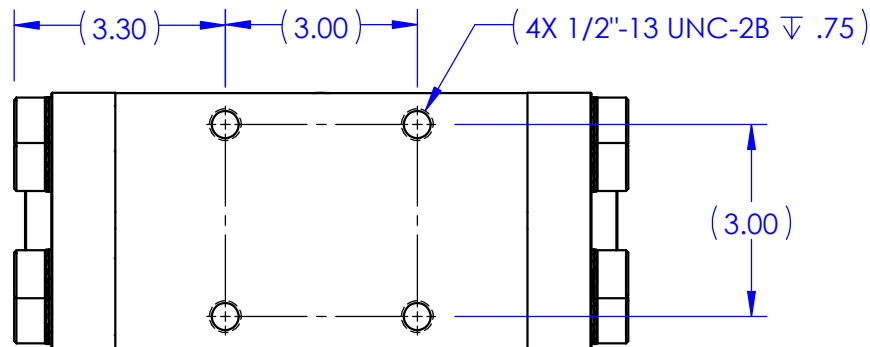
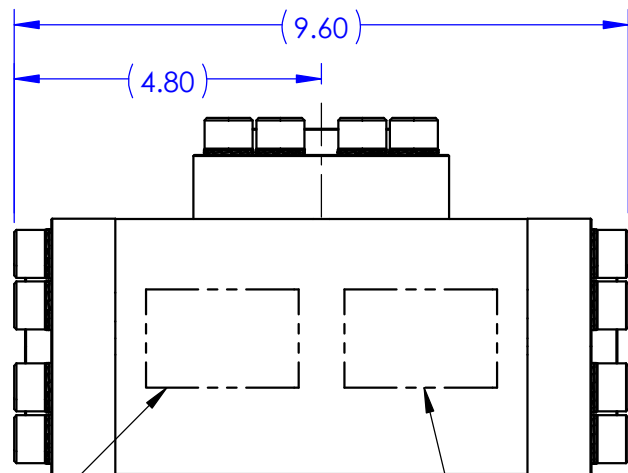
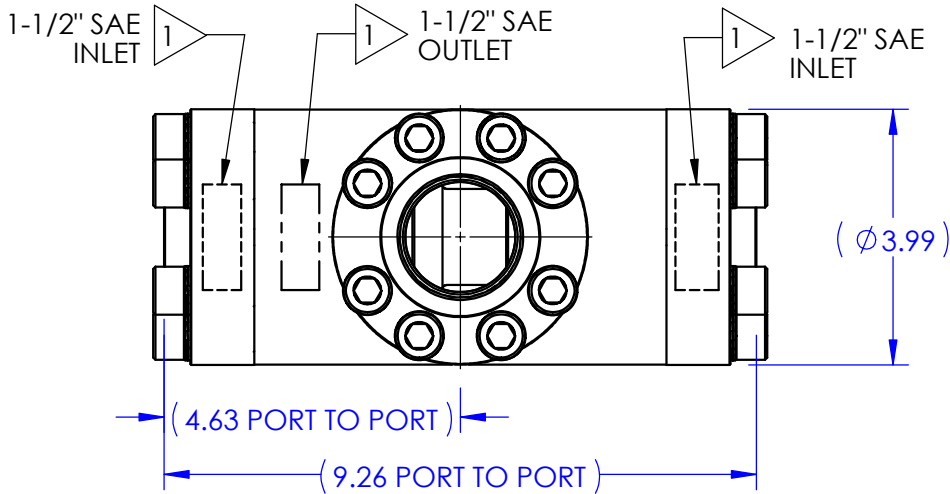
29181

REV
A

SCALE 1:3

SolidWorks

SHEET 1 OF 2



29181
VER (AX VERSION #)
(SERIAL NUMBER)
PATENT 9,719,600
5,000 PSI
(DATE OF MFG)
SEE SHOP TRAVELER
FOR ADDITIONAL
INFO REQUIRED

LOGO AND
COMPANY INFO

SEE SHEET 2

MATERIAL:
REFER TO INDIV
BOM ITEMS

CONDITION:

TREATMENT:

PROCEDURE NUMBER:

7

DIMENSIONS AND TOLERANCES ARE
IN INCHES PER ASME Y14.5M-1994.
UNLESS OTHERWISE SPECIFIED:

1) TOLERANCES: .X: ±.1
.XX: ±.01
.XXX: ±.005
ANGLES: ±.5°

2) SURFACE TEXTURE: 63

3) CORADIAL FEATURES SHALL BE ©
WITHIN .010

4) BREAK SHARP EDGES .010

5) INTERNAL RADII SHALL BE .016 MAX

6) DRILL POINTS OPTIONAL WHEN SHOWN
UNSPECIFIED, ALL DRILL POINT ANGLES
SHALL BE BETWEEN 90°-140°

APPROVAL

DRAWN BY	DATE
CJC	6-7-21
CHECKED BY	DATE
RV	6/7/21
ENGINEER	DATE
AJP	6/7/21
ERN NUMBER	DATE
02502	5-7-21

THE INFORMATION CONTAINED IN THIS DRAWING IS THE
SOLE PROPERTY OF GILMORE VALVE CO UNLESS OTHERWISE
STATED. ANY REPRODUCTION IN PART OR WHOLE WITHOUT
THE WRITTEN PERMISSION OF GILMORE VALVE CO IS PROHIBITED.

4

3

2

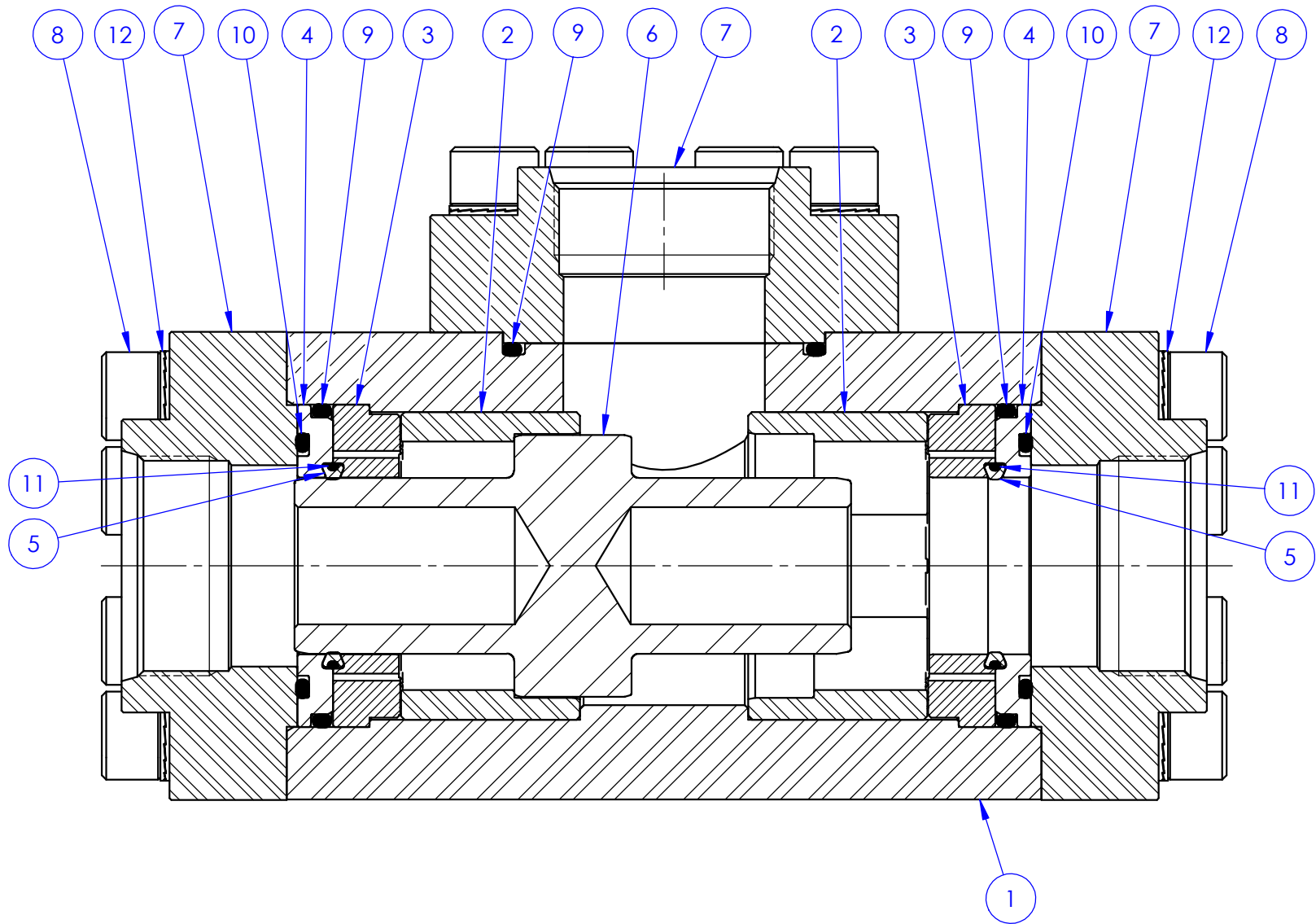
1

B

B

A

A



SECTION A-A

BILL OF MATERIALS

ITEM NO	PART NUMBER	DESCRIPTION	MATERIAL	QTY	RK	SK
1	220374	BODY, 1-1/2" SHUTTLE, GEN 2	A276 TP 316 (316 SS)	1		
2	146133	SLEEVE, 1-1/2", LOW INTERFLOW	A276 UNS S21800 (NITRONIC 60)	2		
3	146135	SPACER, 1-1/2", LOW INTERFLOW	POLYETHERETHERKETONE (PEEK)	2	X	X
4	146134	CAP, 1-1/2"	A276 UNS S21800 (NITRONIC 60)	2	X	
5	146136	V-SEAL, 1-1/2", GEN 2	PTFE MOLDED BAR	2	X	X
6	146132	SHUTTLE, 1-1/2", HARD SWAP	A276 UNS S21800 (NITRONIC 60)	1	X	
7	219645	FLANGE, 1-1/2" NPTF	A276 TP 316	3		
8	18224-018	SHCS 1/2-13 UNC X 1.75" LG	A-286	24		
9	18100-114C	O-RING	BUNA-N	3	X	X
10	18100-102C	O-RING	BUNA-N	2	X	X
11	18100-040C	O-RING	BUNA-N	2	X	X
12	18740-006	WASHER, NORD-LOCK	A276 TP 316	24		



ENGINEERING

SIZE

B

DWG NO

29181

REV

A

SCALE

3:4

SolidWorks

SHEET 2 OF 2

NOTES:

- 1 MARKING: MARK COMPONENT WITH ASSEMBLY W.O. AS SHOWN ON THE COMPONENT DRAWING
- 2 MARK AS SHOWN USING LASER ETCH OR COMPUTER CONTROLLED DOT PEEN MARKING MACHINE, .06 HIGH MIN CHARACTERS.
- 3 "X" IN COLUMN RK DENOTES PARTS CONTAINED IN REPAIR KIT 29182 RK
- 4 "X" IN COLUMN SK DENOTES PARTS CONTAINED IN SEAL KIT 29182 SK
- 5 APPLY LOCTITE 243 (BLUE) AND TORQUE ITEM 8 CAP SCREWS AT ASSEMBLY TO 50 FT-LBS.
- 6 ALL MANUFACTURED ITEMS ARE PASSIVATED.
- 7 ASSEMBLY PROCEDURE: 50346
SERVICE MANUAL: 51039
STANDARD FAT: 50347
EXTENDED FAT: 50348

REVISIONS

REV	ERN /ECO NUMBER	DRAWN	CHECKED	APPROVED
A	ERN 02502	CMJ 6-7-21	RV 6/7/21	AJP 6/7/21

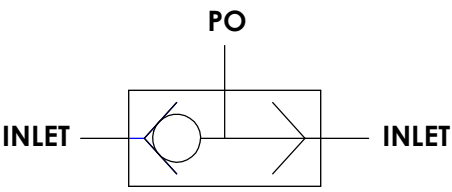
PRESSURE DATA
MAX WORKING PRESSURE: 5,000 PSI

PORTS
INLETS: 1-1/2" SAE
OUTLET: 1-1/2" SAE

FLOW DATA
MAX FLOW CAPACITY: 250 GPM
C_v: 18
MINIMUM SHIFT FLOW: 10 GPM

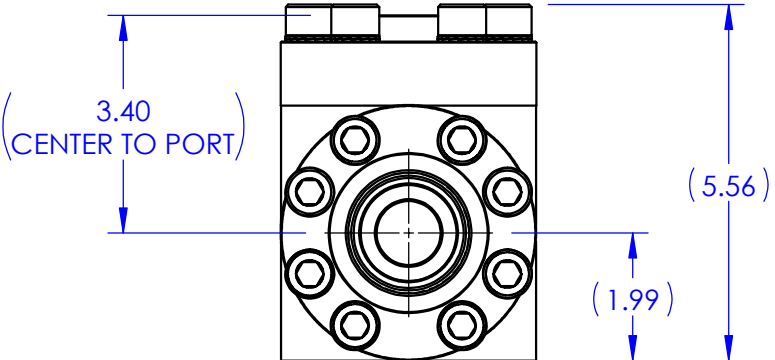
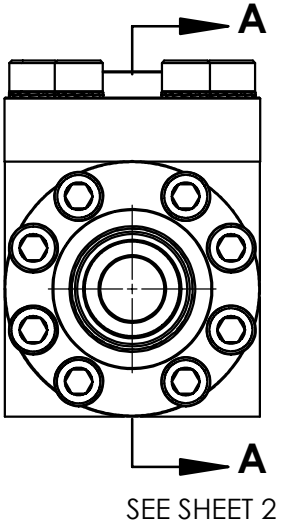
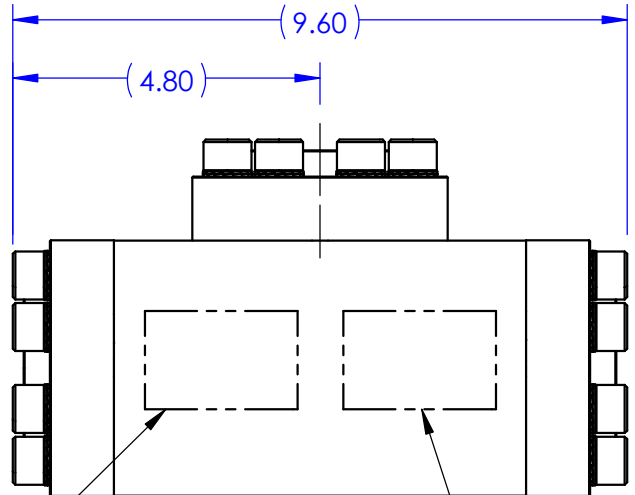
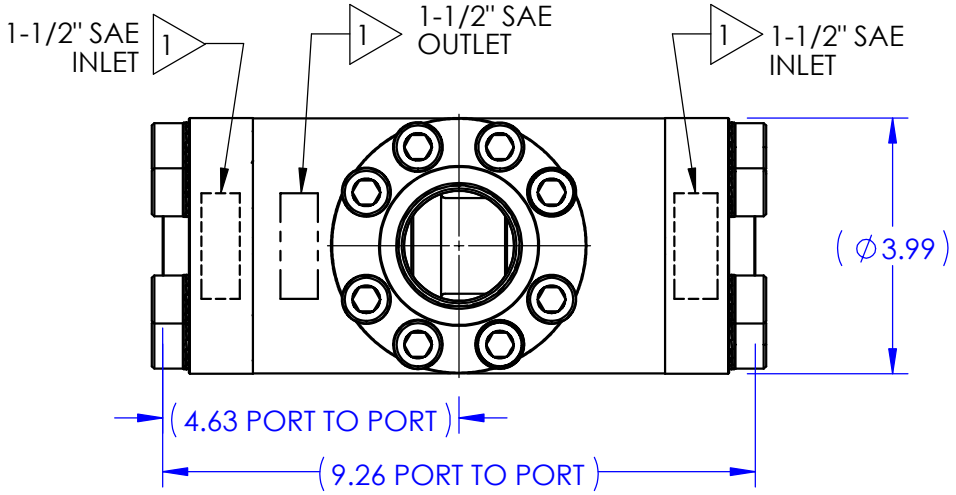
GENERAL DATA
APPROX WEIGHT: 50.5 LBS
TEMPERATURE: 32 °F TO 150 °F
FLUIDS: - WATER BASED DRILLING CONTROL FLUID.
- MINERAL OIL BASED DRILLING CONTROL FLUID.

FIELD SERVICEABLE, REPAIR KITS AVAILABLE
RECOMMENDED INSTALLED POSTION IS HORIZONTAL CENTERLINE, A VERTICAL CENTERLINE WILL INCREASE MINIMUM SHIFT FLOW REQUIRED AND GRAVITY MAY CAUSE SHUTTLE TO MOVE TO LOWEST POSITION



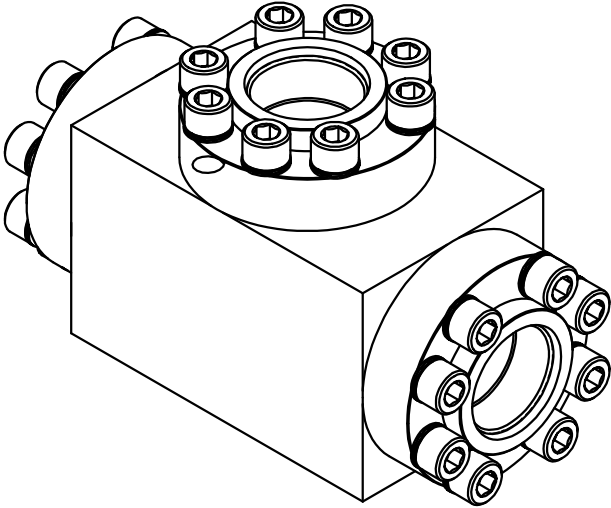
SCHEMATIC

US PATENT 9,719,600



29182
VER (AX VERSION #)
(SERIAL NUMBER)
PATENT 9,719,600
5,000 PSI
(DATE OF MFG)
SEE SHOP TRAVELER
FOR ADDITIONAL
INFO REQUIRED

LOGO AND
COMPANY INFO

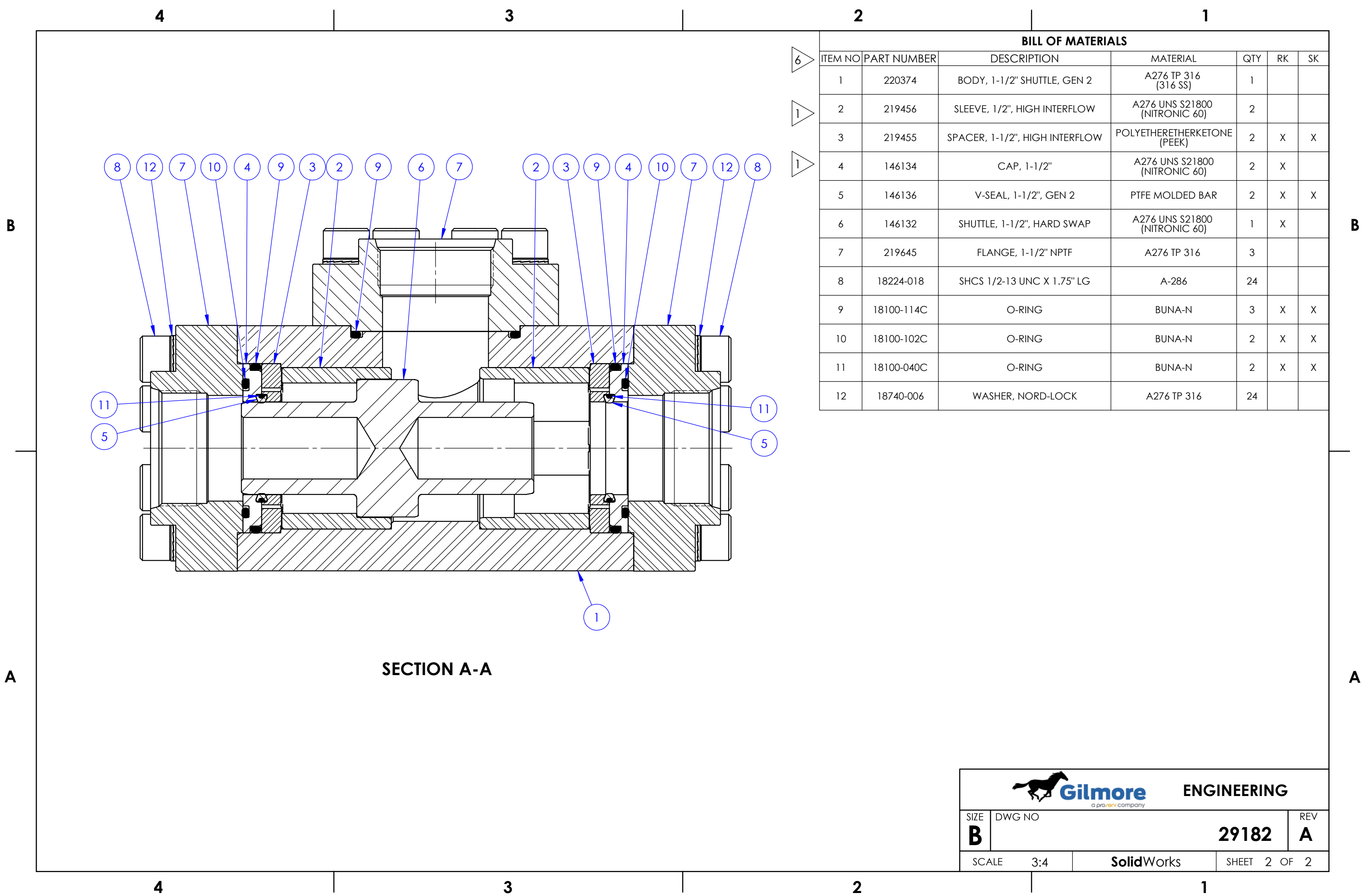


MATERIAL: REFER TO INDIV BOM ITEMS	DIMENSIONS AND TOLERANCES ARE IN INCHES PER ASME Y14.5M-1994. UNLESS OTHERWISE SPECIFIED: 1) TOLERANCES: .X: ±.1 .XX: ±.01 .XXX: ±.005 ANGLES: ±.5° 2) SURFACE TEXTURE: 63 3) CORADIAL FEATURES SHALL BE © WITHIN .010 4) BREAK SHARP EDGES .010 5) INTERNAL RADII SHALL BE .016 MAX 6) DRILL POINTS OPTIONAL WHEN SHOWN UNSPECIFIED, ALL DRILL POINT ANGLES SHALL BE BETWEEN 90°-140°	APPROVAL DRAWN BY CMJ DATE 6-7-21 CHECKED BY RV DATE 6/7/21 ENGINEER AJP DATE 6/7/21 ERN NUMBER 02502 DATE 5-7-21	THE INFORMATION CONTAINED IN THIS DRAWING IS THE SOLE PROPERTY OF GILMORE VALVE CO UNLESS OTHERWISE STATED. ANY REPRODUCTION IN PART OR WHOLE WITHOUT THE WRITTEN PERMISSION OF GILMORE VALVE CO IS PROHIBITED.
CONDITION:			
TREATMENT:			
PROCEDURE NUMBER: 7			



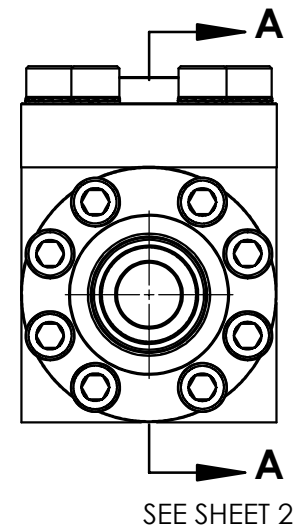
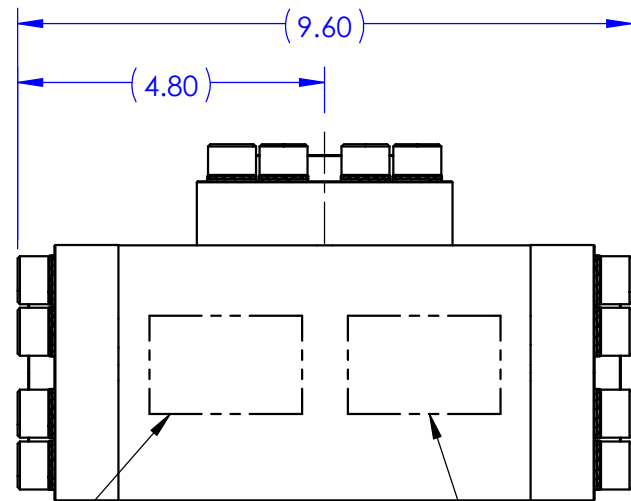
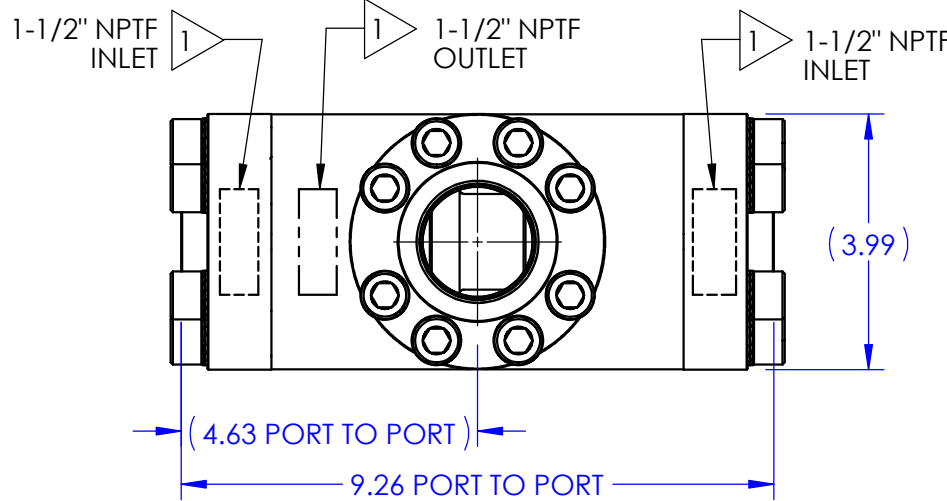
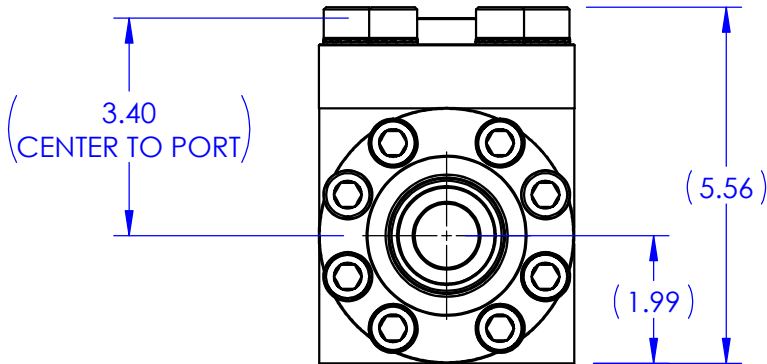
**VALVE, SHUTTLE, 1-1/2", GEN 2
1-1/2 SAE, HIGH INTERFLOW,
5000 PSI**

SIZE B	DWG NO 29182	REV A
SCALE 1:3	SolidWorks	SHEET 1 OF 2



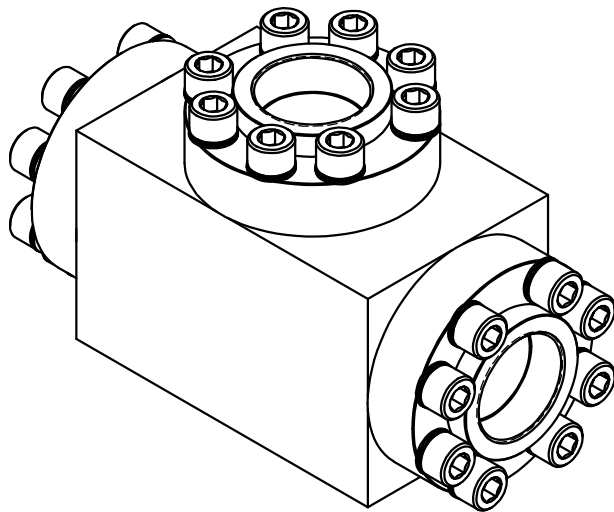
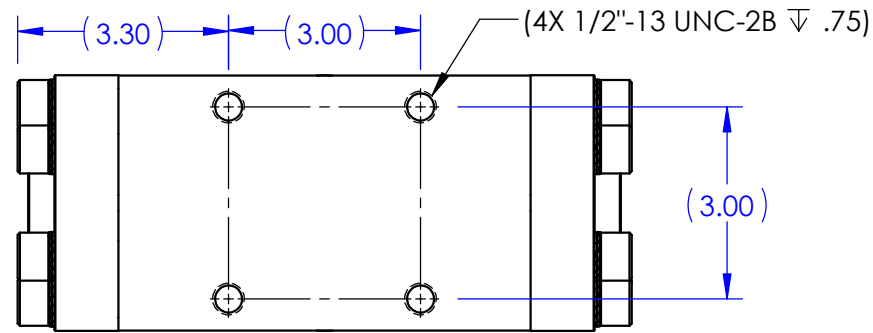
NOTES:

- 1 MARKING: MARK COMPONENT WITH ASSEMBLY W.O. AS SHOWN ON THE COMPONENT DRAWING
- 2 MARK AS SHOWN USING LASER ETCH OR COMPUTER CONTROLLED DOT PEEN MARKING MACHINE, .06 HIGH MIN CHARACTERS.
- 3 "X" IN COLUMN RK DENOTES PARTS CONTAINED IN REPAIR KIT 29183 RK
- 4 "X" IN COLUMN SK DENOTES PARTS CONTAINED IN SEAL KIT 29183 SK
- 5 APPLY LOCTITE 243 (BLUE) AND TORQUE ITEM 8 CAP SCREWS AT ASSEMBLY TO 50 FT-LBS.
- 6 ALL MANUFACTURED ITEMS ARE PASSIVATED.
- 7 ASSEMBLY PROCEDURE: 50346
SERVICE MANUAL: 51039
STANDARD FAT: 50347
EXTENDED FAT: 50348



29183
VER (AX VERSION #)
(SERIAL NUMBER)
PATENT 9,719,600
5,000 PSI
(DATE OF MFG)
SEE SHOP TRAVELER
FOR ADDITIONAL
INFO REQUIRED

LOGO AND
COMPANY INFO



REVISIONS				
REV	ERN /ECO NUMBER	DRAWN	CHECKED	APPROVED
A	ERN 02502	CMCJ 6-7-21	RV 6/7/21	AJP 6/7/21

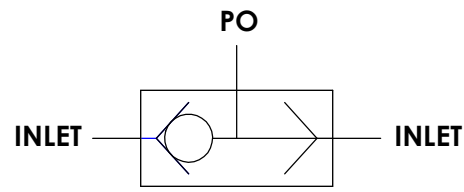
PRESSURE DATA
MAX WORKING PRESSURE: 5,000 PSI

PORTS
INLETS: 1-1/2" NPTF
OUTLET: 1-1/2" NPTF

FLOW DATA
MAX FLOW CAPACITY: 250 GPM
C_v: 18
MINIMUM SHIFT FLOW: 1 GPM




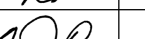
GENERAL DATA
APPROX WEIGHT: 50.5 LBS
TEMPERATURE: 32 °F TO 150 °F
FLUIDS: - WATER BASED DRILLING CONTROL FLUID.
- MINERAL OIL BASED DRILLING CONTROL FLUID.

FIELD SERVICEABLE, REPAIR KITS AVAILABLE
RECOMMENDED INSTALLED POSTION IS HORIZONTAL CENTERLINE, A VERTICAL CENTERLINE WILL INCREASE MINIMUM SHIFT FLOW REQUIRED AND GRAVITY MAY CAUSE SHUTTLE TO MOVE TO LOWEST POSITION



SCHEMATIC

US PATENT 9,719,600

MATERIAL: REFER TO INDIV BOM ITEMS		<div>DIMENSIONS AND TOLERANCES ARE IN INCHES PER ASME Y14.5M-1994. UNLESS OTHERWISE SPECIFIED: 1) TOLERANCES: .X: ±.1 .XX: ±.01 .XXX: ±.005 ANGLES: ±.5° 2) SURFACE TEXTURE: 63 ✓ 3) CORADIAL FEATURES SHALL BE ☉ WITHIN .010 4) BREAK SHARP EDGES .010 5) INTERNAL RADII SHALL BE .016 MAX 6) DRILL POINTS OPTIONAL WHEN SHOWN UNSPECIFIED, ALL DRILL POINT ANGLES SHALL BE BETWEEN 90°-140°</div>		APPROVAL		<div>ENGINEERING</div>			
CONDITION:				DRAWN BY 	DATE 6-7-21				
TREATMENT:				CHECKED BY 	DATE 6/7/21				
PROCEDURE NUMBER: <div><div>7</div></div>				ENGINEER 	DATE 6/7/21				
				ERN NUMBER 02502	DATE 5-7-21				
THE INFORMATION CONTAINED IN THIS DRAWING IS THE SOLE PROPERTY OF GILMORE VALVE CO UNLESS OTHERWISE STATED. ANY REPRODUCTION IN PART OR WHOLE WITHOUT THE WRITTEN PERMISSION OF GILMORE VALVE CO IS PROHIBITED.						VALVE, SHUTTLE, 1-1/2", GEN 2 1-1/2 NPTF, LOW INTERFLOW 5000 PSI			
		SIZE B		DWG NO		29183		REV A	
		SCALE 1:3		SolidWorks		SHEET 1 OF 2			

NOTES:

- 1 MARKING: MARK COMPONENT WITH ASSEMBLY W.O. AS SHOWN ON THE COMPONENT DRAWING
- 2 MARK AS SHOWN USING LASER ETCH OR COMPUTER CONTROLLED DOT PEEN MARKING MACHINE, .06 HIGH MIN CHARACTERS.
- 3 "X" IN COLUMN RK DENOTES PARTS CONTAINED IN REPAIR KIT 29184 RK
- 4 "X" IN COLUMN SK DENOTES PARTS CONTAINED IN SEAL KIT 29184 SK
- 5 APPLY LOCTITE 243 (BLUE) AND TORQUE ITEM 8 CAP SCREWS AT ASSEMBLY TO 50 FT-LBS
- 6 ALL MANUFACTURED ITEMS ARE PASSIVATED.
- 7 ASSEMBLY PROCEDURE: 50346
SERVICE MANUAL: 51039
STANDARD FAT: 50347
EXTENDED FAT: 50348

REVISIONS

REV	ERN /ECO NUMBER	DRAWN	CHECKED	APPROVED
A	ERN 02502	CMJ 6-7-21	RV 6/7/21	AJP 6/7/21

PRESSURE DATA

MAX WORKING PRESSURE: 5,000 PSI

PORTS

INLETS: 1-1/2" NPTF
OUTLET: 1-1/2" NPTF

FLOW DATA

MAX FLOW CAPACITY: 250 GPM
C_v: 18

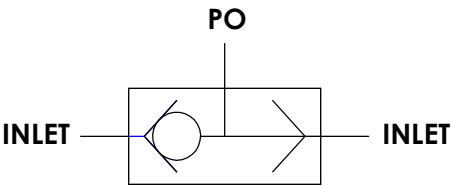
MINIMUM SHIFT FLOW: 10 GPM

GENERAL DATA

APPROX WEIGHT: 50.5 LBS
TEMPERATURE: 32 °F TO 150 °F
FLUIDS: - WATER BASED DRILLING CONTROL FLUID.
- MINERAL OIL BASED DRILLING CONTROL FLUID.

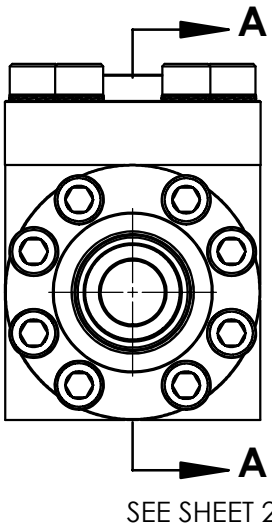
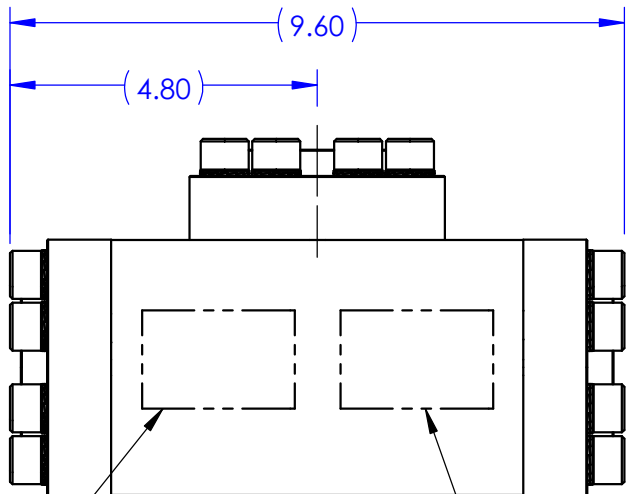
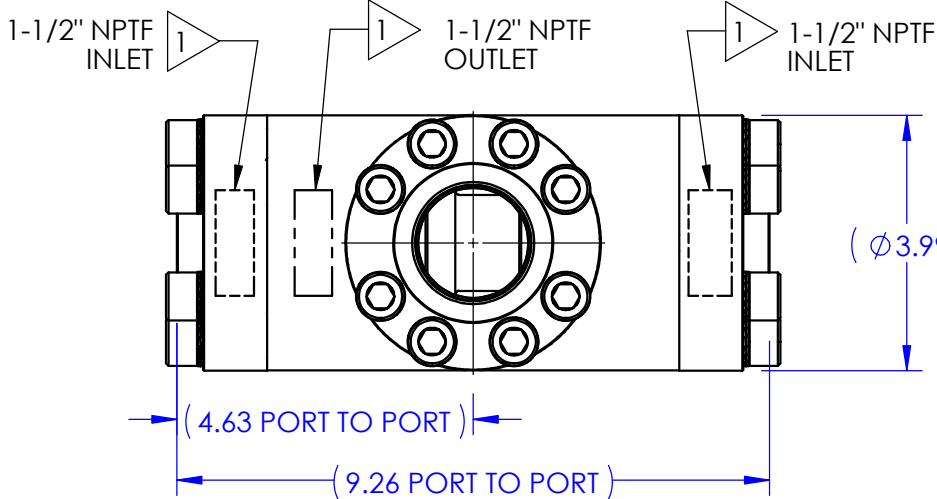
FIELD SERVICEABLE, REPAIR KITS AVAILABLE

RECOMMENDED INSTALLED POSTION IS HORIZONTAL CENTERLINE, A VERTICAL CENTERLINE WILL INCREASE MINIMUM SHIFT FLOW REQUIRED AND GRAVITY MAY CAUSE SHUTTLE TO MOVE TO LOWEST POSITION



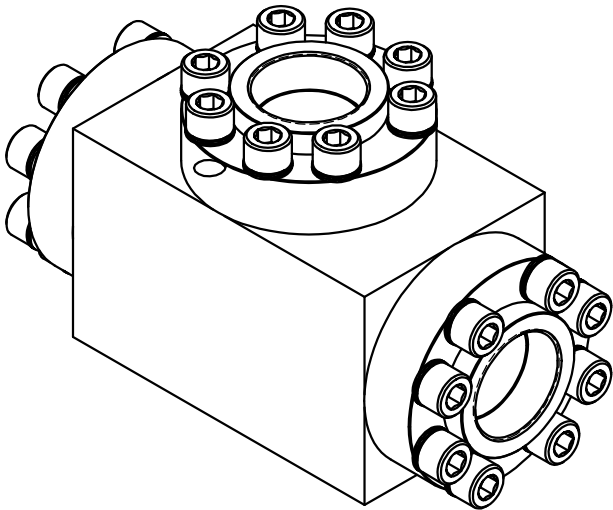
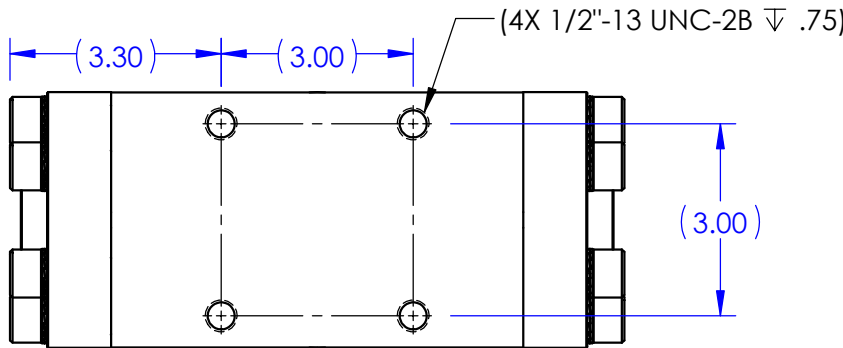
SCHEMATIC

US PATENT 9,719,600



29184
VER (AX VERSION #)
(SERIAL NUMBER)
PATENT 9,719,600
5,000 PSI
(DATE OF MFG)
SEE SHOP TRAVELER
FOR ADDITIONAL
INFO REQUIRED

LOGO AND
COMPANY INFO



MATERIAL:
REFER TO INDIV
BOM ITEMS

CONDITION:

TREATMENT:

PROCEDURE NUMBER:

7

DIMENSIONS AND TOLERANCES ARE
IN INCHES PER ASME Y14.5M-1994.
UNLESS OTHERWISE SPECIFIED:

1) TOLERANCES: .X: ±.1
.XX: ±.01
.XXX: ±.005
ANGLES: ±.5°

2) SURFACE TEXTURE: 63

3) CORADIAL FEATURES SHALL BE ©
WITHIN .010

4) BREAK SHARP EDGES .010

5) INTERNAL RADII SHALL BE .016 MAX

6) DRILL POINTS OPTIONAL WHEN SHOWN
UNSPECIFIED, ALL DRILL POINT ANGLES
SHALL BE BETWEEN 90°-140°

APPROVAL

DRAWN BY	CMJ	DATE	6-7-21
CHECKED BY	RV	DATE	6/7/21
ENGINEER	AJP	DATE	6/7/21
ERN NUMBER	02502	DATE	5-7-21

THE INFORMATION CONTAINED IN THIS DRAWING IS THE
SOLE PROPERTY OF GILMORE VALVE CO UNLESS OTHERWISE
STATED. ANY REPRODUCTION IN PART OR WHOLE WITHOUT
THE WRITTEN PERMISSION OF GILMORE VALVE CO IS PROHIBITED.



ENGINEERING

VALVE, SHUTTLE, GEN 2
1-1/2 NPTF, HIGH INTERFLOW,
5000 PSI

SIZE

B

DWG NO

29184

REV

A

SCALE 1:3

SolidWorks

SHEET 1 OF 2



A

1