

## Gilmore Subsea Compact Pressure Regulator

REV	DATE	DESCRIPTION	ORIGIN	APPROVED
003	08/23/22	Document No: 135-050721-003	BP	BR
002	06/18/21	Document No: 135-050721-002	AP	BR
001	05/07/21	Document No: 135-050721-001	AP	BR

### COMPANY PROPRIETARY INFORMATION

© Proserv Gilmore Valve, LLC and/or its affiliates (Gilmore). All rights reserved. Proserv®, Gilmore™, Gilmore & Design (Stallion) are registered trademarks or trademarks of Gilmore. This notice and the information contained herein is not to be, in whole or in part, reproduced or transmitted in any form by any means without the express permission of Gilmore. **DISCLAIMER:** Whilst Gilmore has carefully reviewed the contents of this notice and believes the information to be correct, Gilmore does not assume any liability in connection with any use of or reliance upon this information and gives no representation or warranty, express or implied, in respect of the information or any products described herein. This notice is intended for use by persons having suitable technical expertise and skill, at their own discretion and risk. Gilmore may change the information contained herein at any time without notice.

---

**For more information:**

Call (800) 469-8786  
[info@gilmore.com](mailto:info@gilmore.com)

Gilmore  
1231 Lumpkin Road  
Houston, TX 77043

## Gilmore Subsea Compact Pressure Regulator

Gilmore announces the new Subsea Pressure Regulator product line for critical hydraulic control systems, operating with supply pressures up to 15,000 psi.

With Tungsten Carbide shear seal trim, the Subsea Compact Pressure Regulator is a simple, robust manual spring valve design that provides the utmost reliability. Its small footprint can be readily panel mounted

### Features and Benefits:

- Qualification exceeds industry requirements
  - 7,500 endurance cycles
- Supply pressure up to 15,000 psi
- Extensive regulated pressure range from 3000 psi – 9000 psi
- Failsafe manual spring configuration
- Construction allows for quick and simple field maintenance
- Tungsten Carbide shear seal trim design
- Optional panel mounting bracket available for installation ease
- CRA Material Construction
  - Tungsten Carbide seal trim
  - Nitronic 50 Body
  - Nitronic 60 Seal Carrier
  - T316 Flanges
  - Inconel X-750 Compression Spring



Figure 1 PN 29149: Subsea Compact Pressure Regulator

3/8" Outlet, 1/4" Inlet, 3000 – 9000 psi range



Gilmore has exceeded industry requirements by qualifying the new Subsea Compact Pressure Regulator design to 7,500 cycles, with a flow rate of 4 gpm, at 15,000 psi inlet & 3000 psi setpoint with 1% - 4% water glycol test fluid.

The new Gilmore Subsea Compact Pressure Regulators are now available for purchase. Examples of assembly configurations are listed below for reference. Gilmore will create other customized Subsea Compact Pressure Regulator configurations at customer request.

Please contact Gilmore Customer Service to request a quotation for the Subsea Compact Pressure Regulator listed below, or for other custom configurations as required.

**Table 1. New Compact Pressure Regulator and Kit Part Numbers:**

Item	New Valve Description	New Valve PN	New Repair Kit PN	New Seal Kit PN
1	Valve, Compact Regulator, 15 ksi Inlet, 9 – 3 ksi setpoint range, 1/4" Supply and Vent, 3/8" Regulated NPT Ports	29149	29149 RK	29149 SK
2	Valve, Compact Regulator, 15 ksi Inlet, 9 – 3 ksi setpoint range, 1/4" Supply and Vent, 3/8" Regulated NPT Ports, Panel Bracket	29150	29150 RK	29150 SK
3	Valve, Compact Regulator, 15 ksi Inlet, 9 – 3 ksi setpoint range, 1/4" MP Ports	29164	29164 RK	29164 SK
4	Valve, Compact Regulator, 15 ksi Inlet, 9 – 3 ksi setpoint range, 1/4" MP Ports, Panel Bracket	29167	29167 RK	29167 SK

## Gilmore Subsea Compact Pressure Regulator



Figure 2. PN 29149: Subsea Compact Pressure Regulator, Maximum 15 ksi Inlet, 9 – 3 ksi Regulated Range, 1/4 x 3/8 NPT

4

3

2

1

## NOTES:

- 1 MARKING: MARK COMPONENT WITH ASSEMBLY W.O. AS SHOWN ON COMPONENT DRAWING.
- 2 "X" IN THE BOM DEPICTS PARTS IN REPAIR KIT 29149 RK, AND SEAL KIT 29149 SK.
- 3 MARK AS SHOWN USING LASER ETCH OR COMPUTER CONTROLLED DOT PEEN MARKING MACHINE, .06 HIGH MIN CHARACTERS.
- 4 ASSEMBLY PROCEDURE: 50331  
STANDARD FAT PROCEDURE: 50332  
EXTENDED FAT PROCEDURE: 50333  
SERVICE MANUAL: 51033
- 5 ALL MANUFACTURED ITEMS ARE PASSIVATED
- 6 TORQUE CAPSCREW (ITEM 7) TO 10 FT - LB.  
TORQUE CAPSCREW (ITEM 17) TO 5 IN - LB.  
TORQUE VENTED PLUG (ITEM 22) TO 20 FT - LB.

REVISIONS						
REV	ERN /ECO NUMBER	DRAWN	DRAFT CHECK	ENGR. REVIEW	ENGR. APPROVED	MFG. APPROVED
D	ECO 022698	JZ 4/21/22	JZ 4/21/22	AP 4/20/22	AP 4/22/22	JZ 4/25/22

## PRESSURE DATA

VALVE MAWP: 15,000 PSI  
 REGULATED PRESSURE RANGE: 3,000 - 9,000 PSI  
 TYPICAL DEADBAND: 900 +/- 100 PSI AT 15,000 PSI SUPPLY  
 700 +/- 100 PSI AT 10,000 PSI SUPPLY  
 TYPICAL CHANGE IN SETPOINT PER ADJUSTMENT SCREW TURN: 650 PSI  
 ADJUSTMENT SCREW TORQUE MAX 35 FT-LB

## PORTS

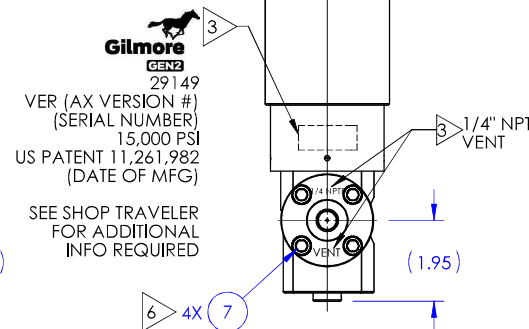
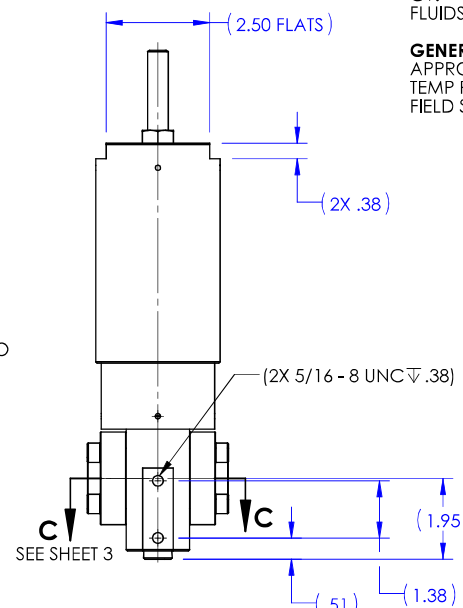
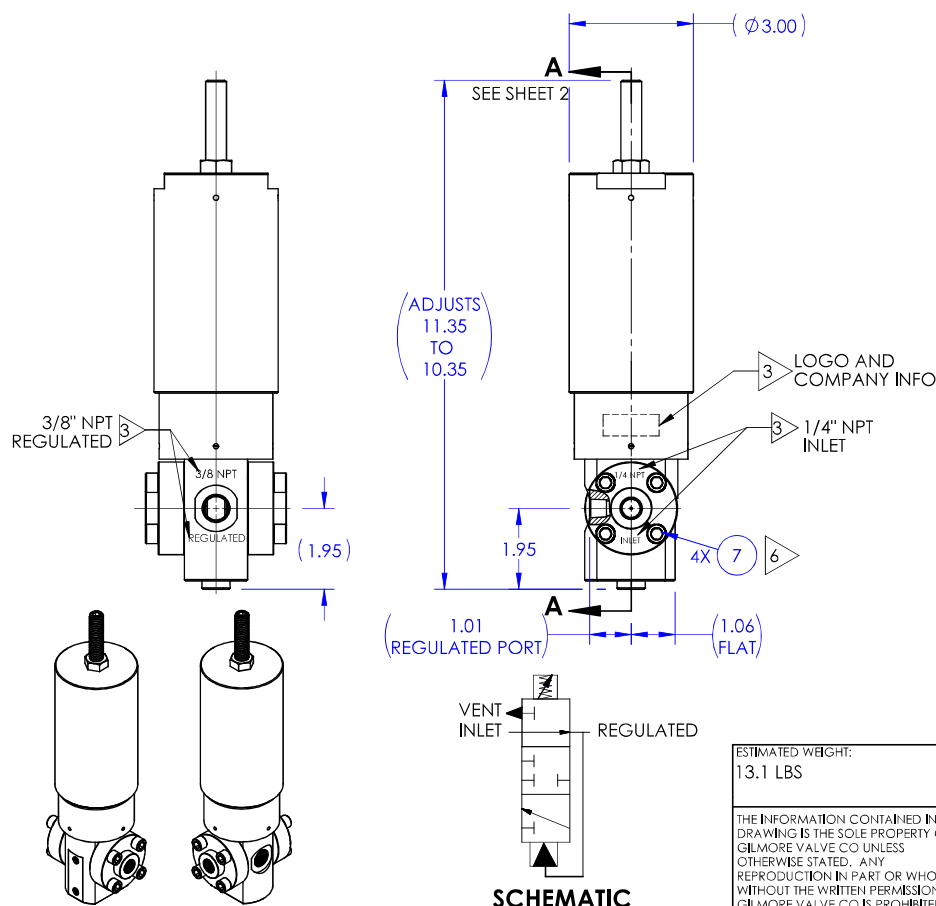
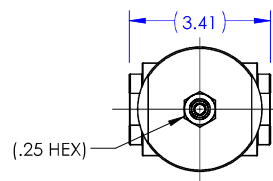
INLET PORT: 1/4" NPT  
 REGULATED PORT: 3/8" NPT  
 VENT PORT: 1/4" NPT

## FLOW DATA

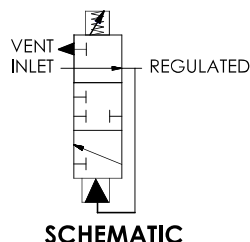
TYPICAL FLOW RATE: 4 GPM  
 Cv: .08 (CALC)  
 FLUIDS: WATER BASED DRILLING CONTROL FLUID  
 MINERAL OIL BASED DRILLING CONTROL FLUID

## GENERAL DATA

APPROX WEIGHT: 13.1 LBS  
 TEMP RANGE: 32°F TO 150°F  
 FIELD SERVICEABLE



U.S. PATENT 11,261,982



SCHEMATIC

ESTIMATED WEIGHT:  
13.1 LBS

THE INFORMATION CONTAINED IN THIS DRAWING IS THE SOLE PROPERTY OF GILMORE VALVE CO UNLESS OTHERWISE STATED. ANY REPRODUCTION IN PART OR WHOLE WITHOUT THE WRITTEN PERMISSION OF GILMORE VALVE CO IS PROHIBITED.

MATERIAL:  
REFER TO INDIV  
BOM ITEMS

CONDITION:

TREATMENT:

PROCEDURE NUMBER:

## APPROVAL

DRAWN BY	JZ	DATE	2/11/2021
DRAFT CHECKED BY	CMY	DATE	2/11/2021
ENGR. REVIEW BY		DATE	
ENGR. APPROVE BY	AP	DATE	2/11/2021
MFG. APPROVE BY		DATE	
ERN NUMBER	02471	DATE	1/14/2021

**Gilmore** ENGINEERING

**VALVE, PRESSURE REGULATOR,  
GEN 2, COMPACT, 3/15 KSI,  
3/8" NPT, SUBSEA**

SIZE	DWG NO	REV
B	29149	D
SCALE	1:2	SHEET 1 OF 4

SolidWorks

4

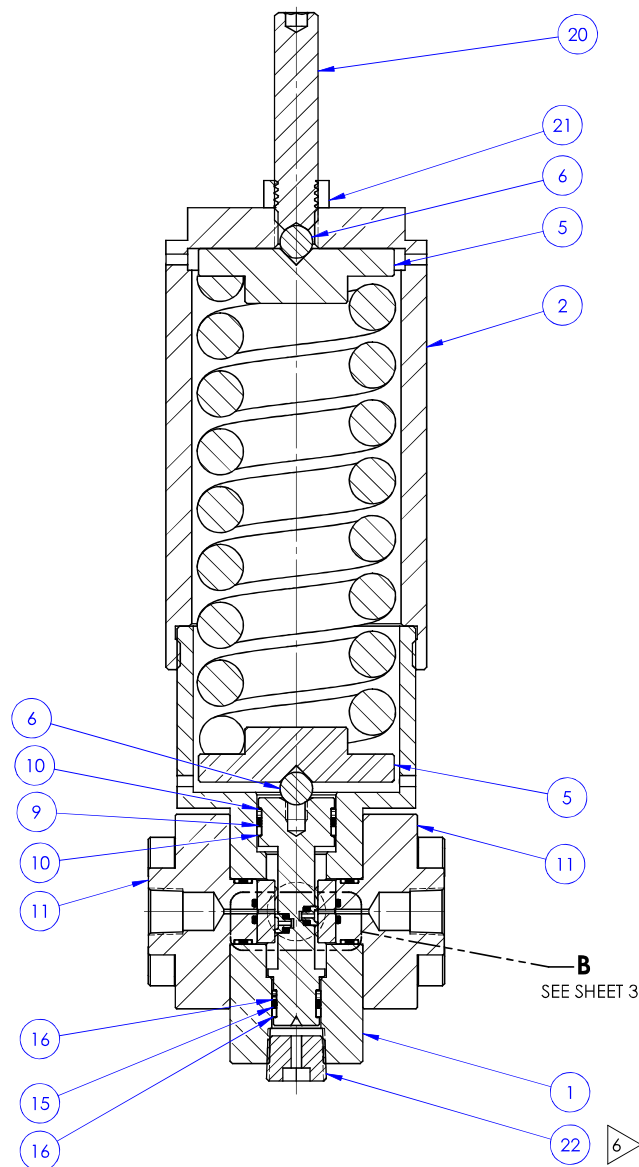
3

2

1

B

A



SECTION A-A  
SCALE 0.7 : 1



5

1

D

D

D

D

D

**BILL OF MATERIALS**

ITEM NO	PART NUMBER	DESCRIPTION	MATERIAL	QTY	RK	SK
1	216344	BODY, 3/8" NPTF, COMPACT REGULATOR	A276 TP S20910 (NITRONIC 50)	1		
2	216345	HOUSING, SPRING, VALVE, COMPACT REGULATOR, GEN 2	A276 UNS S21800 (NITRONIC 60)	1		
3	205409	PLATE, SEAL, COMPACT REGULATOR	TUNGSTEN CARBIDE /NICKEL	2	X	
4	205410	CONTAINER, SEAL, COMPACT REGULATOR	A276 TP S21800 (NITRONIC 60)	1	X	
5	216346	SPRING DISK	A276 TP 316 (316 SS)	2		
6	18800-007	BALL	A276 TP 316 (316 SS)	2		
7	18224-047	SHCS, 5/16-18 UNC X 1" LG	A453 GR660	8		
8	214606	SPRING, COMPRESSION	INCONEL X-750	1		
9	18100-007C	O-RING	BUNA-N	1	X	X
10	212267	BACKUP RING	PEEK	2	X	X
11	205412	FLANGE, 1/4" NPTF, COMPACT REGULATOR	A276 TP 316 (316 SS)	2		
12	205414	HYDRO SEAL, VENT, COMPACT REGULATOR	TUNGSTEN CARBIDE /NICKEL	2	X	
13	18100-014C	O-RING	BUNA-N	2	X	X
14	18100-613K1	O-RING	HNBR	2	X	X
15	18100-013C	O-RING	BUNA-N	1	X	X
16	205415	BACKUP RING	PEEK	2	X	X
17	18221-010G	SHCS #4-40 UNC X 3/8" LG NYLOK	F593 Gr 2 COND A (316 SS)/NYLON	4	X	X
18	18100-001K1	O-RING	HNBR	2	X	X
19	205416	BACKUP RING	PEEK	4	X	X
20	227239	ADJUSTMENT SCREW, 1/2"-13 UNC	TP 316	1		
21	216349	JAM-NUT, HEX, 1/2"-13 UNC	TP 316	1		
22	216350	PIPE PLUG, 3/8" NPT, VENTED	TP 316	1		

B

A

**Gilmore****ENGINEERING**

SIZE DWG NO

**B****29149**

REV

**D**

SCALE 1:2

**SolidWorks**

SHEET 2 OF 4

4

3

2

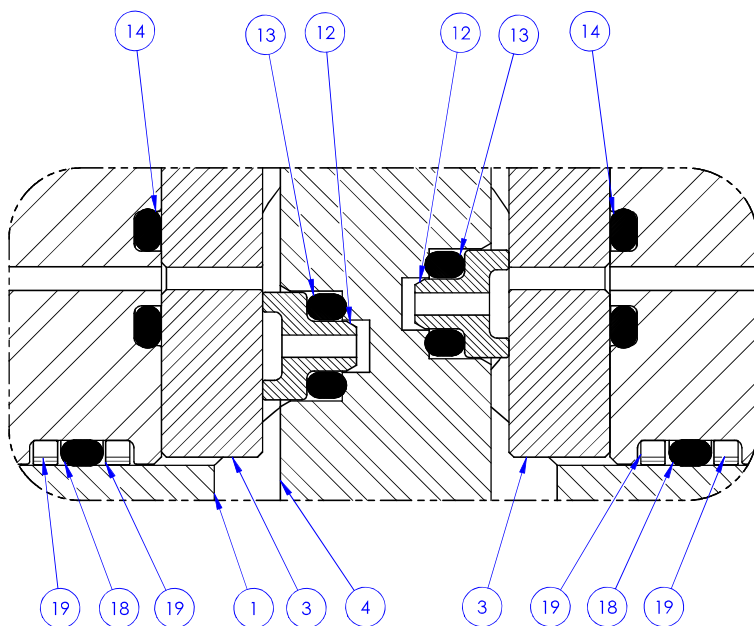
1

4

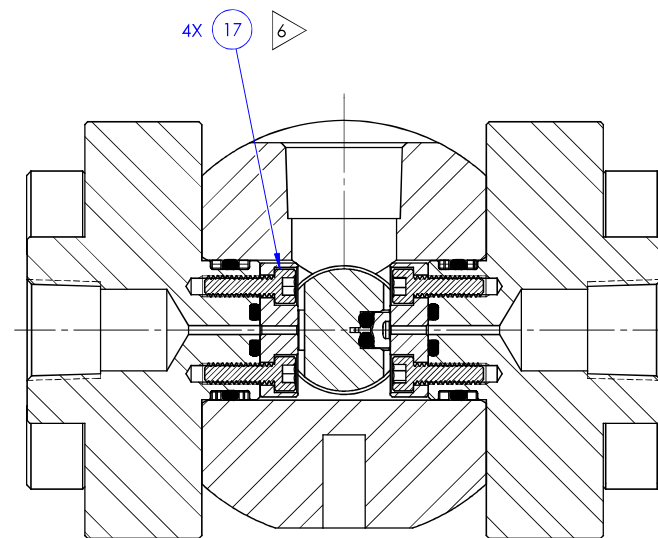
3

2

1

**DETAIL B**

(REFER TO SHEET 4 FOR POSITIONS)

**SECTION C-C**

		<b>ENGINEERING</b>	
SIZE <b>B</b>	DWG NO	<b>29149</b>	REV <b>D</b>
SCALE 1:2	SolidWorks	SHEET 3 OF 4	

4

3

2

1

4

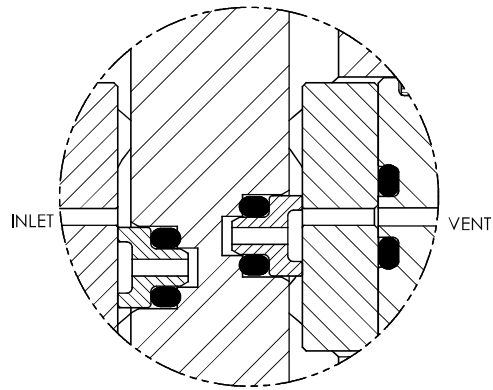
3

2

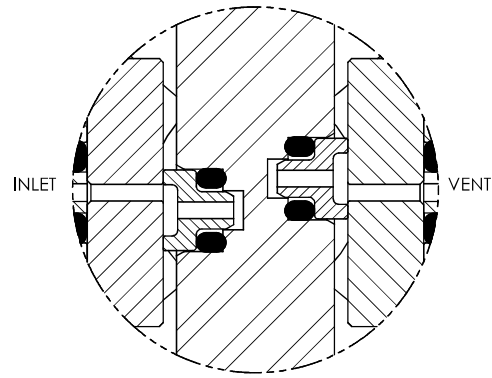
1

B

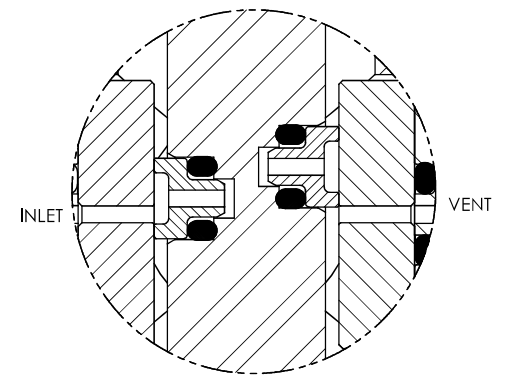
B



**DETAIL B  
OPEN**



**DETAIL B  
CLOSED**



**DETAIL B  
VENT**

A

A

4

3

2

1

		<b>ENGINEERING</b>	
SIZE <b>B</b>	DWG NO	<b>29149</b>	REV <b>D</b>
SCALE 1:2	SolidWorks	SHEET 4 OF 4	



4

3

2

1

## NOTES:

- 1 MARKING: MARK COMPONENT WITH ASSEMBLY W.O. AS SHOWN ON COMPONENT DRAWING.
- 2 "X" IN THE BOM DEPICTS PARTS IN REPAIR KIT 29150 RK, AND SEAL KIT 29150 SK.
- 3 MARK AS SHOWN USING LASER ETCH OR COMPUTER CONTROLLED DOT PEEN MARKING MACHINE, .06 HIGH MIN CHARACTERS.
- 4 ASSEMBLY PROCEDURE: 50331  
STANDARD FAT PROCEDURE: 50332  
EXTENDED FAT PROCEDURE: 50333  
SERVICE MANUAL: 51033
- 5 ALL MANUFACTURED ITEMS ARE PASSIVATED
- 6 TORQUE CAPSCREW (ITEM 7) TO 10 FT - LB.  
TORQUE CAPSCREW (ITEM 17) TO 5 IN - LB.  
TORQUE VENTED PLUG (ITEM 22) TO 20 FT-LB.

REVISIONS						
REV	ERN /ECO NUMBER	DRAWN	DRAFT CHECK	ENGR. REVIEW	ENGR. APPROVED	MFG. APPROVED
C	ECO 022698	JZ 4/21/22	JZ 4/21/22	AP 4/20/22	AP 4/22/22	JZ 4/25/22

## PRESSURE DATA

VALVE MAWP: 15,000 PSI  
 REGULATED PRESSURE RANGE: 3,000 - 9,000 PSI  
 TYPICAL DEADBAND: 900 +/- 100 PSI AT 15,000 PSI SUPPLY  
 700 +/- 100 PSI AT 10,000 PSI SUPPLY  
 TYPICAL CHANGE IN SETPOINT PER ADJUSTMENT SCREW TURN: 650 PSI  
 ADJUSTMENT SCREW TORQUE MAX 35 FT-LB

## PORTS

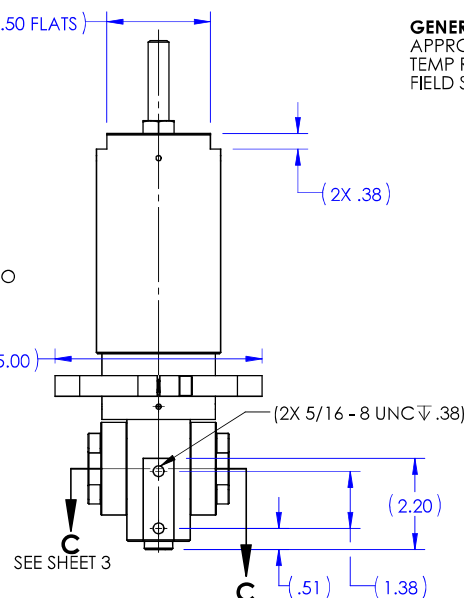
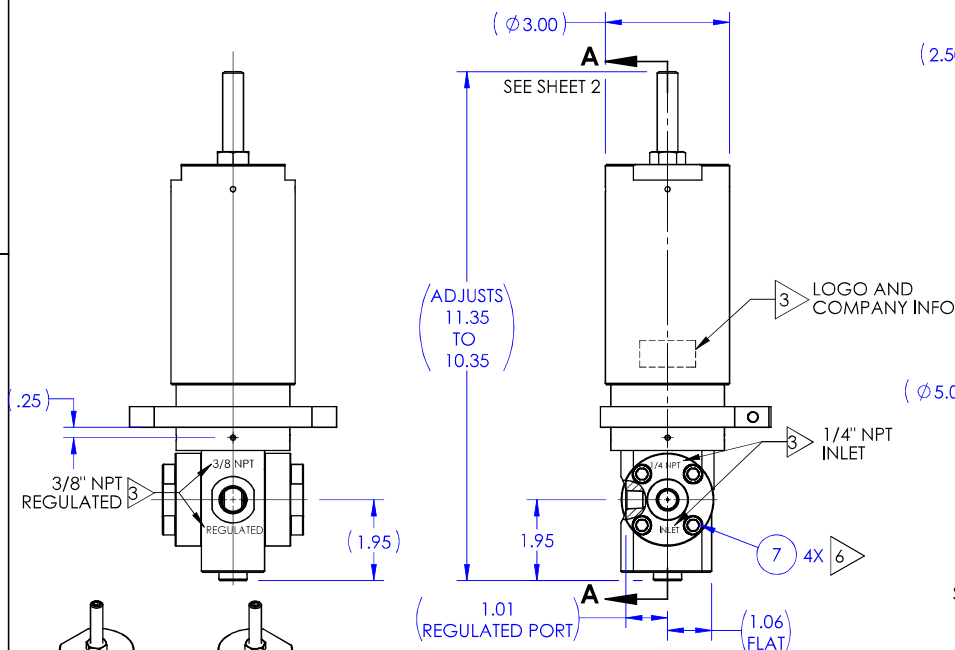
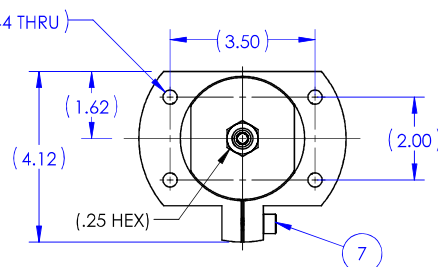
INLET PORT: 1/4" NPT  
 REGULATED PORT: 3/8" NPT  
 VENT PORT: 1/4" NPT

## FLOW DATA

TYPICAL FLOW RATE: 4 GPM  
 Cv: .08 (CALC)  
 FLUIDS: WATER BASED DRILLING CONTROL FLUID  
 MINERAL OIL BASED DRILLING CONTROL FLUID

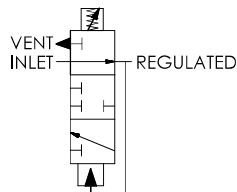
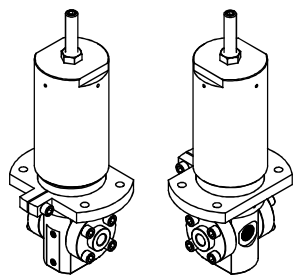
## GENERAL DATA

APPROX WEIGHT: 13.3 LBS  
 TEMP RANGE: 32 °F TO 150 °F  
 FIELD SERVICEABLE



**Gilmore**  
 GEN2  
 29150  
 VER (AX VERSION #)  
 (SERIAL NUMBER)  
 15,000 PSI  
 US PATENT 11,261,982  
 (DATE OF MFG)  
 SEE SHOP TRAVELER  
 FOR ADDITIONAL  
 INFO REQUIRED

U.S. PATENT 11,261,982



SCHEMATIC

ESTIMATED WEIGHT:

THE INFORMATION CONTAINED IN THIS  
 DRAWING IS THE SOLE PROPERTY OF  
 GILMORE VALVE CO UNLESS  
 OTHERWISE STATED. ANY  
 REPRODUCTION IN PART OR WHOLE  
 WITHOUT THE WRITTEN PERMISSION OF  
 GILMORE VALVE CO IS PROHIBITED.

MATERIAL: REFER TO INDIV BOM ITEMS	APPROVAL	DRAWN BY JZ	DATE 2/11/2021
CONDITION:	DRAFT CHECKED BY CY	DATE 2/11/2021	DATE
TREATMENT:	ENGR. REVIEW BY	DATE	DATE
PROCEDURE NUMBER:	ENGR. APPROVE BY AP	DATE 2/11/2021	DATE
	MFG. APPROVE BY	DATE	DATE
	ERN NUMBER 02471	DATE 1/14/2021	DATE

<b>Gilmore</b> ENGINEERING		VALVE, PRESSURE REGULATOR, GEN 2, COMPACT, BRACKET, 3/15 KSI, 3/8" NPT, SUBSEA	
SIZE <b>B</b>	DWG NO <b>29150</b>	REV <b>C</b>	
SCALE 1:2	SolidWorks	SHEET 1 OF 4	

4

3

2

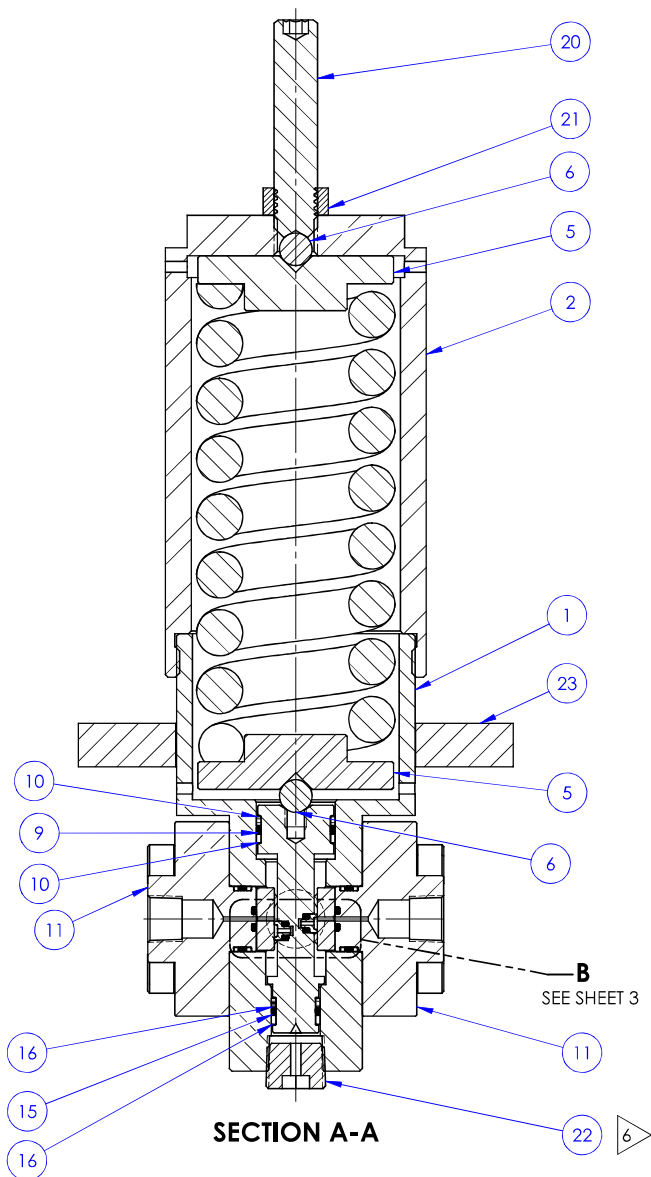
1

4

3

2

1



ENGINEERING

SIZE <b>B</b>	DWG NO <b>29150</b>	REV <b>C</b>
SCALE 1:2	SolidWorks	SHEET 2 OF 4

## BILL OF MATERIALS

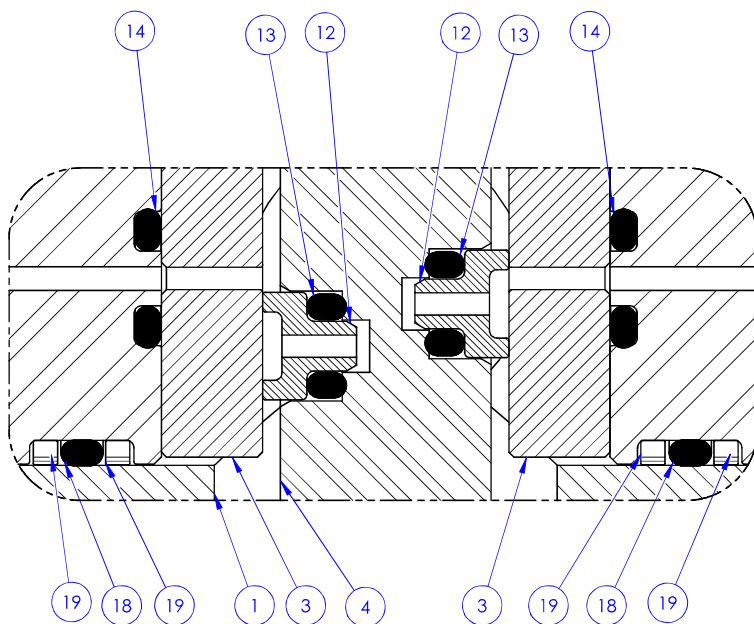
ITEM NO	PART NUMBER	DESCRIPTION	MATERIAL	QTY	RK	SK
1	216344	BODY, 3/8" NPTF, COMPACT REGULATOR	A276 TP S20910 (NITRONIC 50)	1		
2	216345	HOUSING, SPRING, VALVE, COMPACT REGULATOR, GEN 2	A276 UNS S21800 (NITRONIC 60)	1		
3	205409	PLATE, SEAL, COMPACT REGULATOR	TUNGSTEN CARBIDE /NICKEL	2	X	
4	205410	CONTAINER, SEAL, COMPACT REGULATOR	A276 TP S21800 (NITRONIC 60)	1	X	
5	216346	SPRING DISK	A276 TP 316 (316 SS)	2		
6	18800-007	BALL	A276 TP 316 (316 SS)	2		
7	18224-047	SHCS, 5/16-18 UNC X 1" LG	A453 GR660	9		
8	214606	SPRING, COMPRESSION	INCONEL X-750	1		
9	18100-007C	O-RING	BUNA-N	1	X	X
10	212267	BACKUP RING	PEEK	2	X	X
11	205412	FLANGE, 1/4" NPTF, COMPACT REGULATOR	A276 TP 316 (316 SS)	2		
12	205414	HYDRO SEAL, VENT, COMPACT REGULATOR	TUNGSTEN CARBIDE /NICKEL	2	X	
13	18100-014C	O-RING	BUNA-N	2	X	X
14	18100-613K1	O-RING	HNBR	2	X	X
15	18100-013C	O-RING	BUNA-N	1	X	X
16	205415	BACKUP RING	PEEK	2	X	X
17	18221-010G	SHCS #4-40 UNC X 3/8" LG NYLOK	F593 Gr 2 COND A (316 SS)/NYLON	4	X	X
18	18100-001K1	O-RING	HNBR	2	X	X
19	205416	BACKUP RING	PEEK	4	X	X
20	227239	ADJUSTMENT SCREW, 1/2"-13 UNC	TP 316	1		
21	216349	JAM - NUT, HEX, 1/2"-13 UNC	TP 316	1		
22	216350	PIPE PLUG, 3/8" NPT, VENTED	TP 316	1		
23	216547	PANEL BRACKET	A240	1		

4

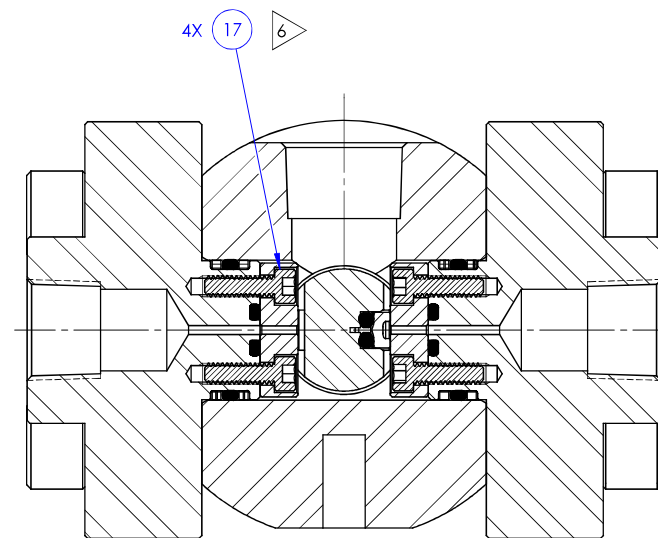
3

2

1

**DETAIL B**

(REFER TO SHEET 4 FOR POSITIONS)

**SECTION C-C**

		<b>ENGINEERING</b>	
SIZE <b>B</b>	DWG NO	<b>29150</b>	REV <b>C</b>
SCALE 1:2	SolidWorks	SHEET 3 OF 4	

4

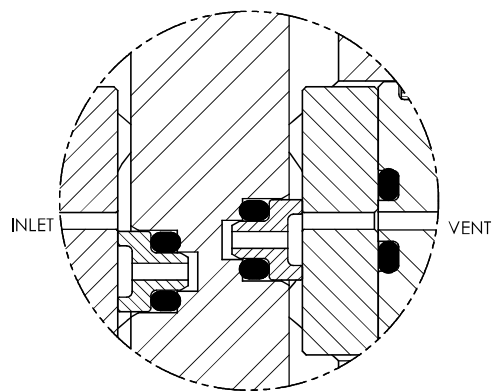
3

2

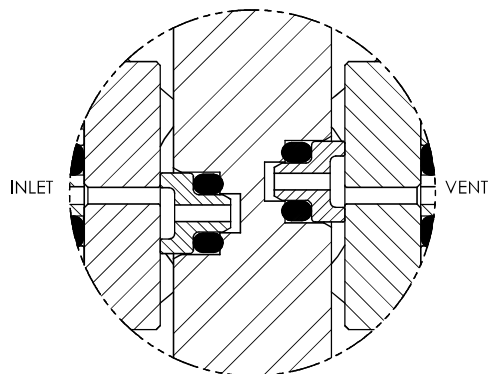
1

B

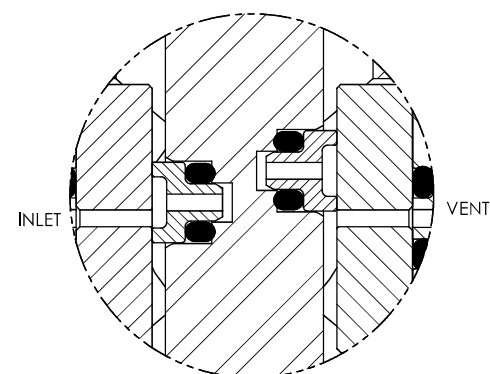
B



**DETAIL B  
OPEN**



**DETAIL B  
CLOSED**



**DETAIL B  
VENT**

A

A

4

3

2

1

		<b>ENGINEERING</b>	
SIZE <b>B</b>	DWG NO	<b>29150</b>	REV <b>C</b>
SCALE 1:2	SolidWorks	SHEET 4 OF 4	

4

3

2

1

## NOTES:

- 1 MARKING: MARK COMPONENT WITH ASSEMBLY W.O. AS SHOWN ON COMPONENT DRAWING.
- 2 "X" IN THE BOM DEPICTS PARTS IN REPAIR KIT 29164 RK, AND SEAL KIT 29164 SK.
- 3 MARK AS SHOWN USING LASER ETCH OR COMPUTER CONTROLLED DOT PEEN MARKING MACHINE, .06 HIGH MIN CHARACTERS.
- 4 ASSEMBLY PROCEDURE: 50331  
STANDARD FAT PROCEDURE: 50332  
EXTENDED FAT PROCEDURE: 50333  
SERVICE MANUAL: 51033
- 5 ALL MANUFACTURED ITEMS ARE PASSIVATED
- 6 TORQUE CAPSCREW (ITEM 7) TO 10 FT - LB.  
TORQUE CAPSCREW (ITEM 17) TO 5 IN - LB.  
TORQUE VENTED PLUG (ITEM 22) TO 20 FT - LB.

REVISIONS							
REV	ERN /ECO NUMBER	DRAWN	DRAFT CHECK	ENGR. REVIEW	ENGR. APPROVED	MFG. APPROVED	
C	ECO 022698	JZ 4/21/22	JS 4/21/22	AGP 4/20/22	MB 4/22/22	jle 4/25/22	

## PRESSURE DATA

VALVE MAWP: 15,000 PSI  
 REGULATED PRESSURE RANGE: 3,000 - 9,000 PSI  
 TYPICAL DEADBAND: 900 +/- 100 PSI AT 15,000 PSI SUPPLY  
 700 +/- 100 PSI AT 10,000 PSI SUPPLY  
 TYPICAL CHANGE IN SETPOINT PER ADJUSTMENT SCREW TURN: 650 PSI  
 ADJUSTMENT SCREW TORQUE MAX 35 FT-LB

## PORTS

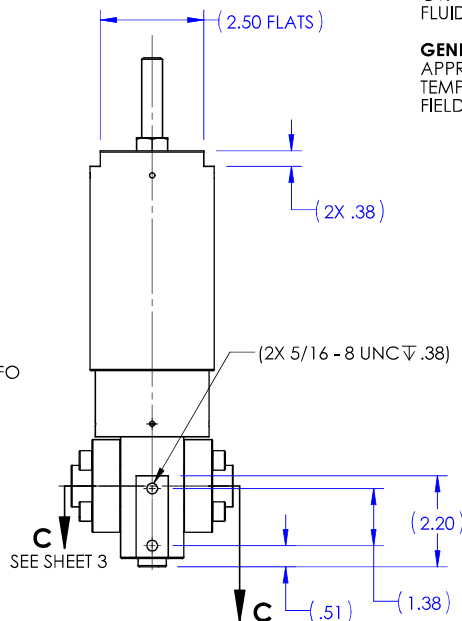
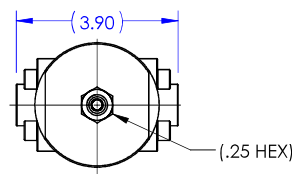
INLET PORT: 1/4" MP  
 REGULATED PORT: 1/4" MP  
 VENT PORT: 1/4" MP

## FLOW DATA

TYPICAL FLOW RATE: 4 GPM  
 Cv: .08 (CALC)  
 FLUIDS: WATER BASED DRILLING CONTROL FLUID  
 MINERAL OIL BASED DRILLING CONTROL FLUID

## GENERAL DATA

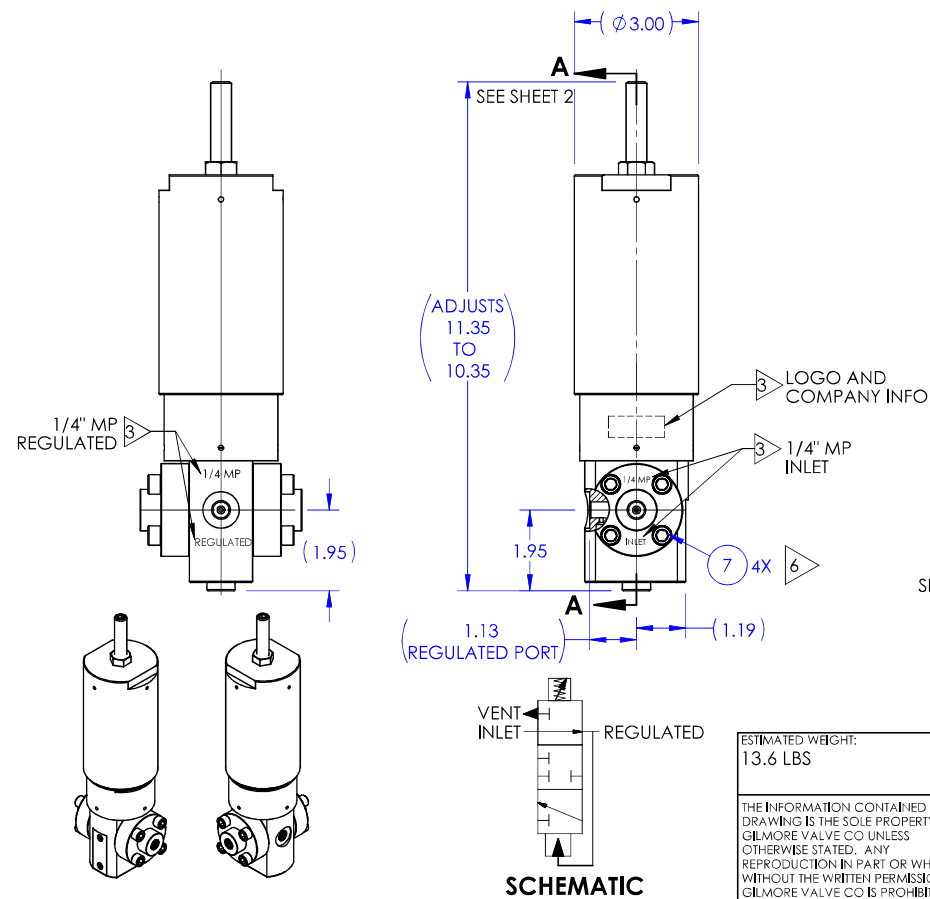
APPROX WEIGHT: 13.7 LBS  
 TEMP RANGE: 32 °F TO 150 °F  
 FIELD SERVICEABLE



U.S. PATENT 11,261,982

MATERIAL: REFER TO INDV BOM ITEMS	APPROVAL	
	DRAWN BY	DATE
CONDITION:	JZ	2/26/2021
	DRAFT CHECKED BY	DATE
TREATMENT:	CMY	2/26/2021
	ENGR. REVIEW BY	DATE
PROCEDURE NUMBER:	ENGR. APPROVE BY	DATE
	AP	2/26/2021
4	MFG. APPROVE BY	DATE
	ERN NUMBER	DATE
	02481	2/22/2021

GILMORE ENGINEERING	
VALVE, PRESSURE REGULATOR, GEN 2, COMPACT, 3/15 KSI, 1/4" MP, SUBSEA	
SIZE B	DWG NO 29164
SCALE 1:2	SHEET 1 OF 4

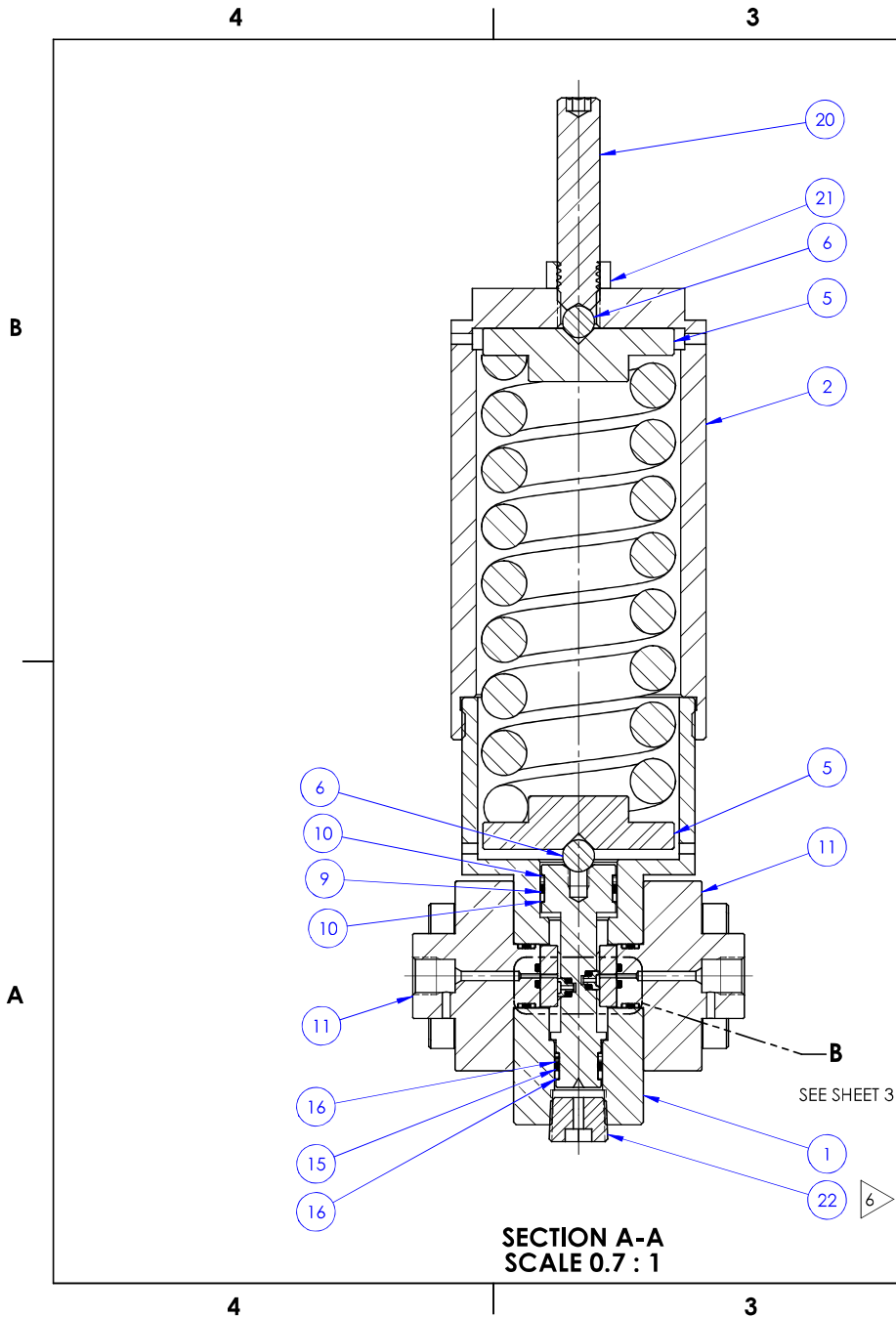


4

3

2

1

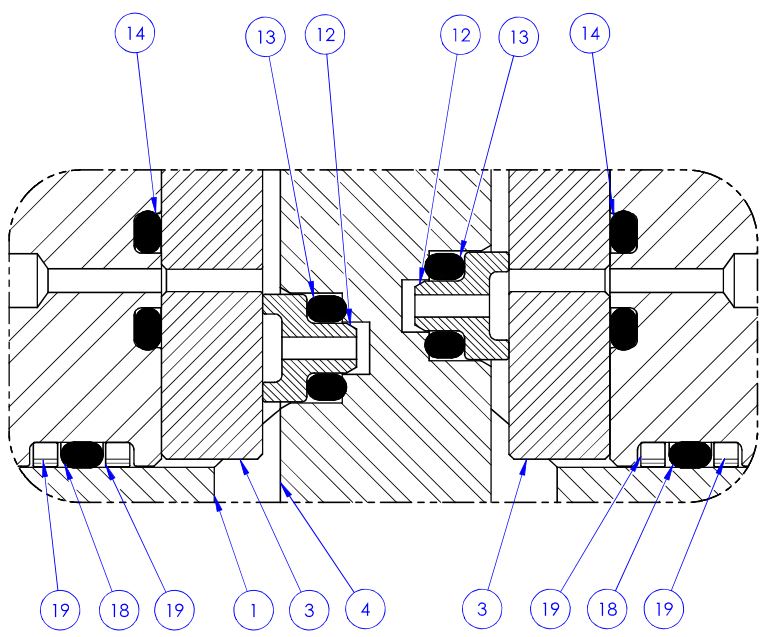


2

1

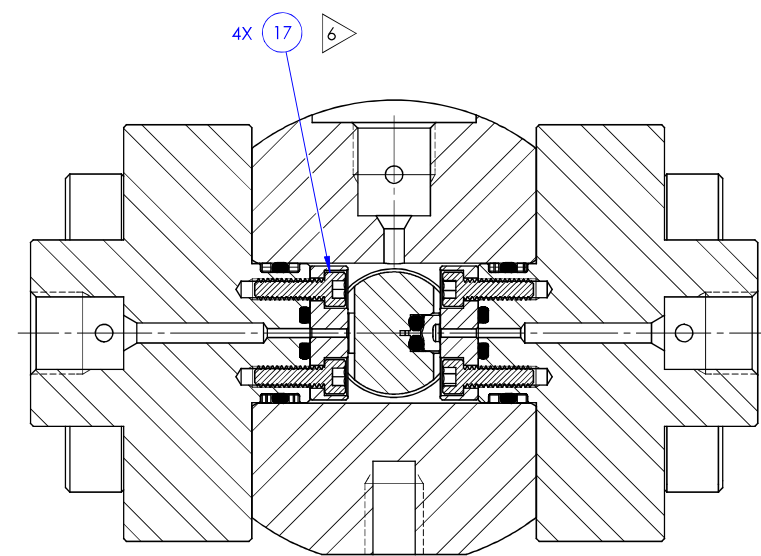
BILL OF MATERIALS						
ITEM NO	PART NUMBER	DESCRIPTION	MATERIAL	QTY	RK	SK
1	217526	BODY, 1/4" MP, COMPACT REGULATOR	A276 TP S20910 (NITRONIC 50)	1		
2	216345	HOUSING, SPRING, VALVE, COMPACT REGULATOR, GEN 2	A276 UNS S21800 (NITRONIC 60)	1		
3	205409	PLATE, SEAL, COMPACT REGULATOR	TUNGSTEN CARBIDE /NICKEL	2	X	
4	205410	CONTAINER, SEAL, COMPACT REGULATOR	A276 TP S21800 (NITRONIC 60)	1	X	
5	216346	SPRING DISK	A276 TP 316 (316 SS)	2		
6	18800-007	BALL	A276 TP 316 (316 SS)	2		
7	18224-047	SHCS, 5/16-18 UNC X 1" LG	A453 GR660	8		
8	214606	SPRING, COMPRESSION	INCONEL X-750	1		
9	18100-007C	O-RING	BUNA-N	1	X	X
10	212267	BACKUP RING	PEEK	2	X	X
11	217525	FLANGE, 1/4" MP, COMPACT REGULATOR	A276 TP 316 (316 SS)	2		
12	205414	HYDRO SEAL, VENT, COMPACT REGULATOR	TUNGSTEN CARBIDE /NICKEL	2	X	
13	18100-014C	O-RING	BUNA-N	2	X	X
14	18100-613K1	O-RING	HNBR	2	X	X
15	18100-013C	O-RING	BUNA-N	1	X	X
16	205415	BACKUP RING	PEEK	2	X	X
17	18221-010G	SHCS #4-40 UNC X 3/8" LG NYLOK	F593 Gr 2 COND A (316 SS)/NYLON	4	X	X
18	18100-001K1	O-RING	HNBR	2	X	X
19	205416	BACKUP RING	PEEK	4	X	X
20	227239	ADJUTMENT SCREW, 1/2"-13 UNC	TP 316	1		
21	216349	JAM-NUT, HEX, 1/2"-13 UNC	TP 316	1		
22	216350	PIPE PLUG, 3/8" NPT, VENTED	TP 316	1		

4 3 2 1



**DETAIL B**

(REFER TO SHEET 4 FOR POSITIONS)



**SECTION C-C**

B

B

A

A

4 3 2 1

			<b>ENGINEERING</b>	
SIZE <b>B</b>	DWG NO	<b>29164</b>		REV <b>C</b>
SCALE 1:2	<b>SolidWorks</b>		SHEET 3 OF 4	

4

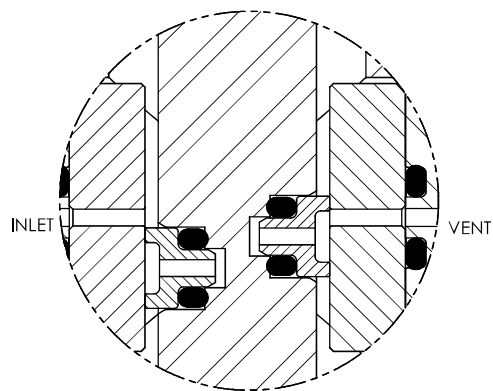
3

2

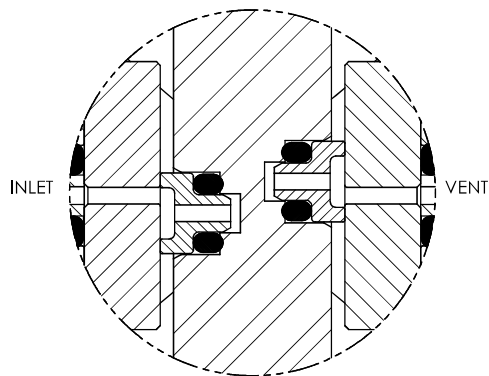
1

B

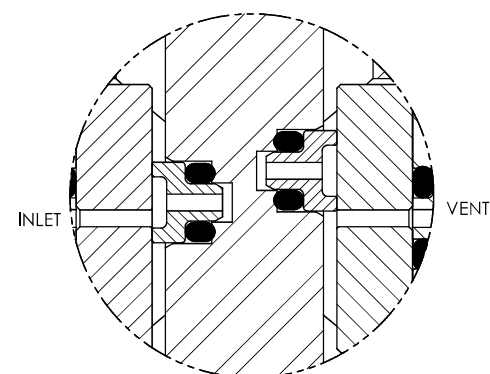
B



**DETAIL B  
OPEN**



**DETAIL B  
CLOSED**



**DETAIL B  
VENT**

A

A

4

3

2

1

		<b>ENGINEERING</b>	
SIZE <b>B</b>	DWG NO	<b>29164</b>	REV <b>C</b>
SCALE 1:2	SolidWorks	SHEET 4 OF 4	




4

3

2


1

## NOTES:

- 1 MARKING: MARK COMPONENT WITH ASSEMBLY W.O. AS SHOWN ON COMPONENT DRAWING.
- 2 "X" IN THE BOM DEPICTS PARTS IN REPAIR KIT 29167 RK, AND SEAL KIT 29167 SK. 
- 3 MARK AS SHOWN USING LASER ETCH OR COMPUTER CONTROLLED DOT PEEN MARKING MACHINE, .06 HIGH MIN CHARACTERS.
- 4 ASSEMBLY PROCEDURE: 50331  
STANDARD FAT PROCEDURE: 50332  
EXTENDED FAT PROCEDURE: 50333  
SERVICE MANUAL: 51033
- 5 ALL MANUFACTURED ITEMS ARE PASSIVATED
- 6 TORQUE CAPSCREW (ITEM 7) TO 10 FT.-LB.  
TORQUE CAPSCREW (ITEM 17) TO 5 IN.-LB.  
TORQUE VENTED PLUG (ITEM 22) TO 20 FT-LB.

REVISIONS						
REV	ERN /ECO NUMBER	DRAWN	DRAFT CHECK	ENGR. REVIEW	ENGR. APPROVED	MFG. APPROVED
C	ECO 022698	JZ 4/21/22	JS 4/21/22	AJP 4/20/22	JS 4/22/22	jje 4/25/22

## PRESSURE DATA

VALVE MAWP: 15,000 PSI  
 REGULATED PRESSURE RANGE: 3,000 - 9,000 PSI  
 TYPICAL DEADBAND: 900 +/- 100 PSI AT 15,000 PSI SUPPLY  
 700 +/- 100 PSI AT 10,000 PSI SUPPLY  
 TYPICAL CHANGE IN SETPOINT PER ADJUSTMENT SCREW TURN: 650 PSI  
 ADJUSTMENT SCREW TORQUE MAX 35 FT-LB

## PORTS

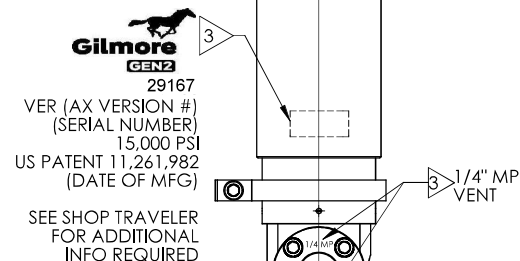
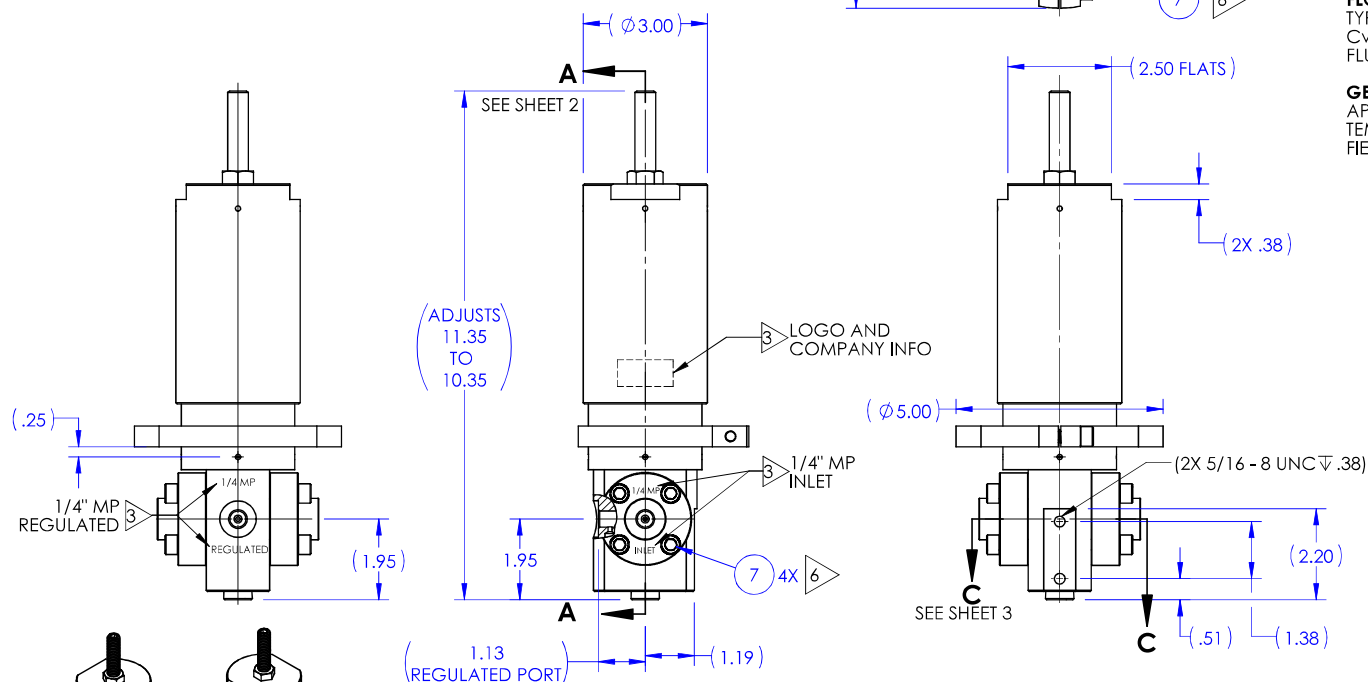
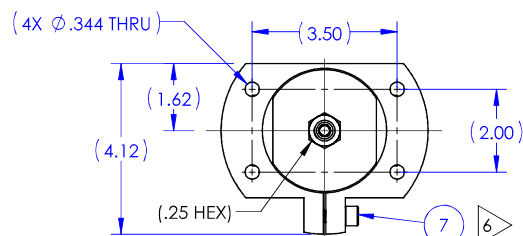
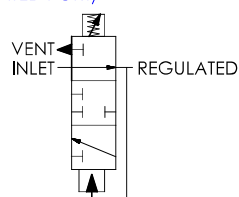
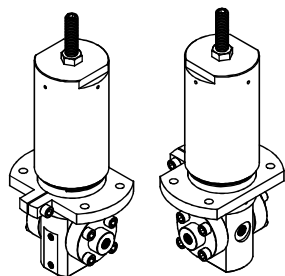
INLET PORT: 1/4" MP  
 REGULATED PORT: 1/4" MP  
 VENT PORT: 1/4" MP

## FLOW DATA

TYPICAL FLOW RATE: 4 GPM  
 Cv: .08 (CALC)  
 FLUIDS: WATER BASED DRILLING CONTROL FLUID  
 MINERAL OIL BASED DRILLING CONTROL FLUID

## GENERAL DATA

APPROX WEIGHT: 13.9 LBS  
 TEMP RANGE: 32 °F TO 150 °F  
 FIELD SERVICEABLE

 U.S. PATENT 11,261,982 

ESTIMATED WEIGHT:  
13.9 LBS

THE INFORMATION CONTAINED IN THIS DRAWING IS THE SOLE PROPERTY OF GILMORE VALVE CO UNLESS OTHERWISE STATED. ANY REPRODUCTION IN PART OR WHOLE WITHOUT THE WRITTEN PERMISSION OF GILMORE VALVE CO IS PROHIBITED.

MATERIAL: REFER TO INDIV BOM ITEMS	APPROVAL	
	DRAWN BY	DATE
CONDITION:	JZ	2/26/2021
	DRAFT CHECKED BY	DATE
TREATMENT:	CY	2/26/2021
	ENGR. REVIEW BY	DATE
PROCEDURE NUMBER:	ENGR. APPROVE BY	DATE
	AP	2/26/2021
4	MFG. APPROVE BY	DATE
	ERN NUMBER	DATE
	02481	2/23/2021

 **ENGINEERING**

**VALVE, PRESSURE REGULATOR,  
 GEN 2, COMPACT, BRACKET,  
 3/15 KSI, 1/4" MP, SUBSEA**

SIZE	DWG NO	REV
<b>B</b>		<b>C</b>
SCALE 1:2	<b>SolidWorks</b>	SHEET 1 OF 4

29167

4

3

2

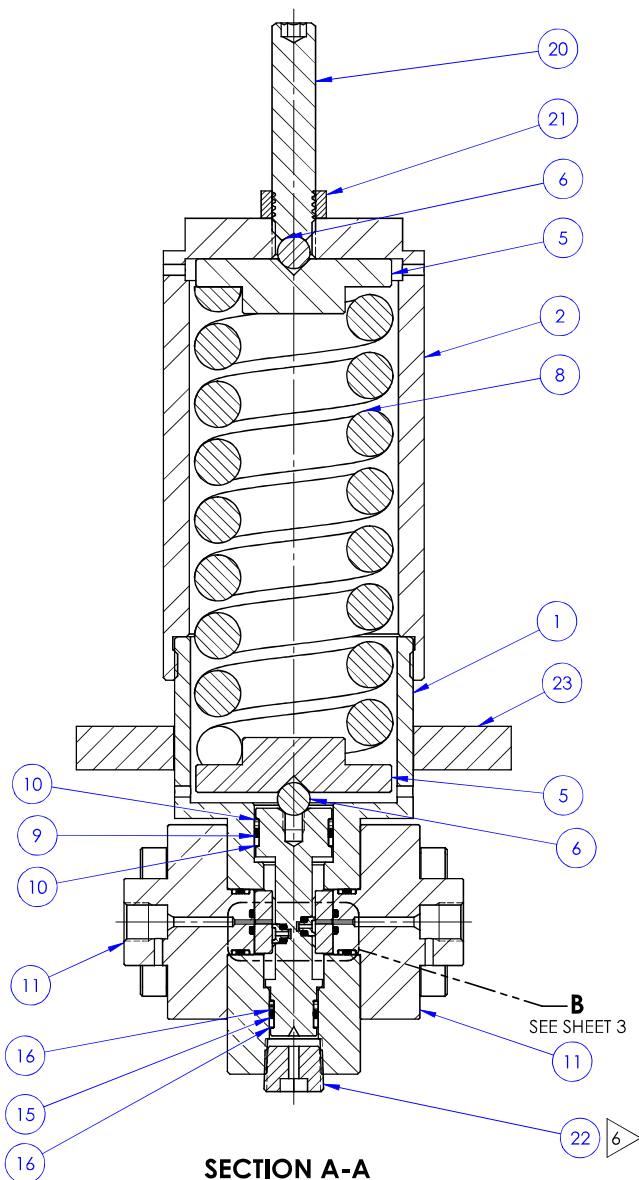
1

4

3

2

1

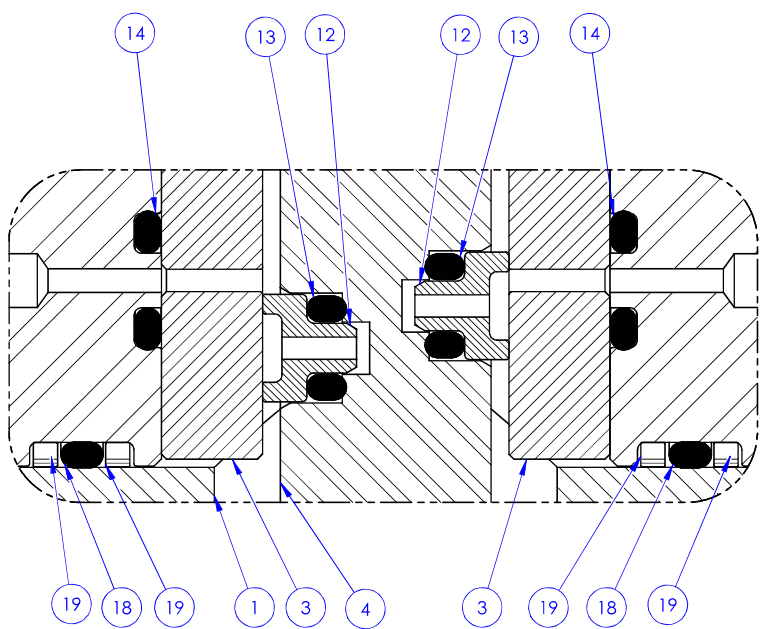
**Gilmore ENGINEERING**

SIZE	DWG NO	REV
<b>B</b>	<b>29167</b>	<b>C</b>
SCALE	1:2	SHEET 2 OF 4

**SolidWorks**

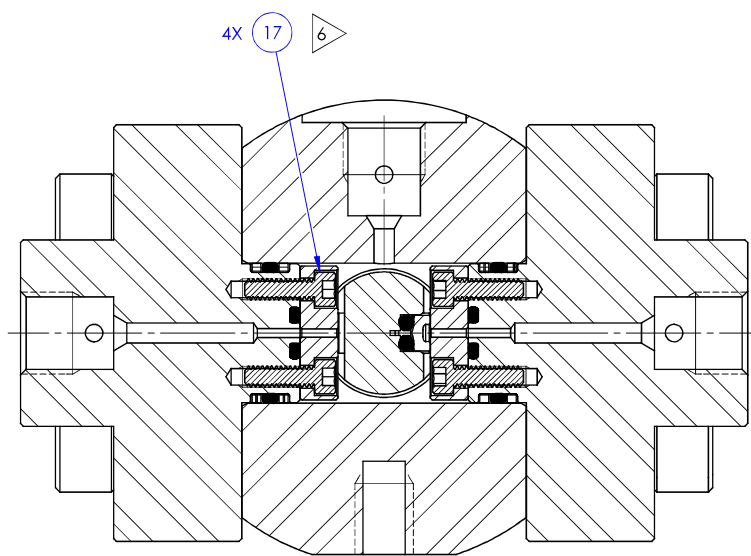
BILL OF MATERIALS						
ITEM NO	PART NUMBER	DESCRIPTION	MATERIAL	QTY	RK	SK
1	217526	BODY, 1/4" MP, COMPACT REGULATOR	A276 TP S20910 (NITRONIC 50)	1		
2	216345	HOUSING, SPRING, VALVE, COMPACT REGULATOR, GEN 2	A276 UNS S21800 (NITRONIC 60)	1		
3	205409	PLATE, SEAL, COMPACT REGULATOR	TUNGSTEN CARBIDE /NICKEL	2	X	
4	205410	CONTAINER, SEAL, COMPACT REGULATOR	A276 TP S21800 (NITRONIC 60)	1	X	
5	216346	SPRING DISK	A276 TP 316 (316 SS)	2		
6	18800-007	BALL	A276 TP 316 (316 SS)	2		
7	18224-047	SHCS, 5/16-18 UNC X 1" LG	A453 GR660	9		
8	214606	SPRING, COMPRESSION	INCONEL X-750	1		
9	18100-007C	O-RING	BUNA-N	1	X	X
10	212267	BACKUP RING	PEEK	2	X	X
11	217525	FLANGE, 1/4" MP, COMPACT REGULATOR	A276 TP 316 (316 SS)	2		
12	205414	HYDRO SEAL, VENT, COMPACT REGULATOR	TUNGSTEN CARBIDE /NICKEL	2	X	
13	18100-014C	O-RING	BUNA-N	2	X	X
14	18100-613K1	O-RING	HNBR	2	X	X
15	18100-013C	O-RING	BUNA-N	1	X	X
16	205415	BACKUP RING	PEEK	2	X	X
17	18221-010G	SHCS #4-40 UNC X 3/8" LG NYLOK	F593 Gr 2 COND A (316 SS)/NYLON	4	X	X
18	18100-001K1	O-RING	HNBR	2	X	X
19	205416	BACKUP RING	PEEK	4	X	X
20	227239	ADJUSTMENT SCREW, 1/2"-13 UNC	TP 316	1		
21	216349	JAM - NUT, HEX, 1/2"-13 UNC	TP 316	1		
22	216350	PIPE PLUG, 3/8" NPT, VENTED	TP 316	1		
23	216547	PANEL BRACKET	A240	1		

4 3 2 1



**DETAIL B**

(REFER TO SHEET 4 FOR POSITIONS)



**SECTION C-C**

B

B

A

A

4 3 2 1

		<b>ENGINEERING</b>	
SIZE <b>B</b>	DWG NO <b>29167</b>	REV <b>C</b>	
SCALE 1:2	SolidWorks	SHEET 3 OF 4	

4

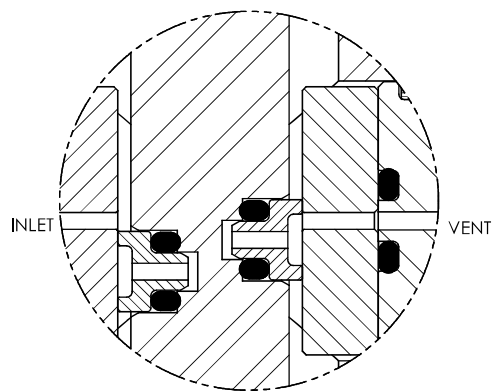
3

2

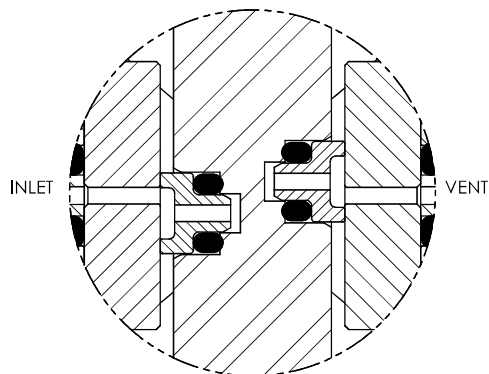
1

B

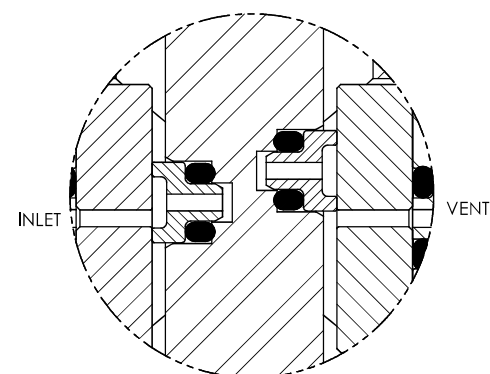
B



**DETAIL B  
OPEN**



**DETAIL B  
CLOSED**



**DETAIL B  
VENT**

A

A

4

3

2

1

		<b>ENGINEERING</b>	
SIZE <b>B</b>	DWG NO	<b>29167</b>	REV <b>C</b>
SCALE 1:2	SolidWorks	SHEET 4 OF 4	