



Product Information Bulletin (PIB)

1-1/2" GEN2 SPM Cartridge & Valve Product Line

REV	DATE	DESCRIPTION	ORIGIN (issued by)	APPROVED
001	01-27-2020	Document No: 105-012720-001	AP	BR

COMPANY PROPRIETARY INFORMATION

© Proserv Gilmore Valve, LLC and/or its affiliates (Gilmore). All rights reserved. Proserv®, Gilmore™, Gilmore & Design (Stallion) are registered trademarks or trademarks of Gilmore. This notice and the information contained herein is not to be, in whole or in part, reproduced or transmitted in any form by any means without the express permission of Gilmore. **DISCLAIMER:** Whilst Gilmore has carefully reviewed the contents of this notice and believes the information to be correct, Gilmore does not assume any liability in connection with any use of or reliance upon this information and gives no representation or warranty, express or implied, in respect of the information or any products described herein. This notice is intended for use by persons having suitable technical expertise and skill, at their own discretion and risk. Gilmore may change the information contained herein at any time without notice.

For more information:

Call (800) 469-8786
info@gilmore.com

Gilmore
1231 Lumpkin Road
Houston, TX 77043

1-1/2" GEN2 SPM Cartridge & Valve Product Line

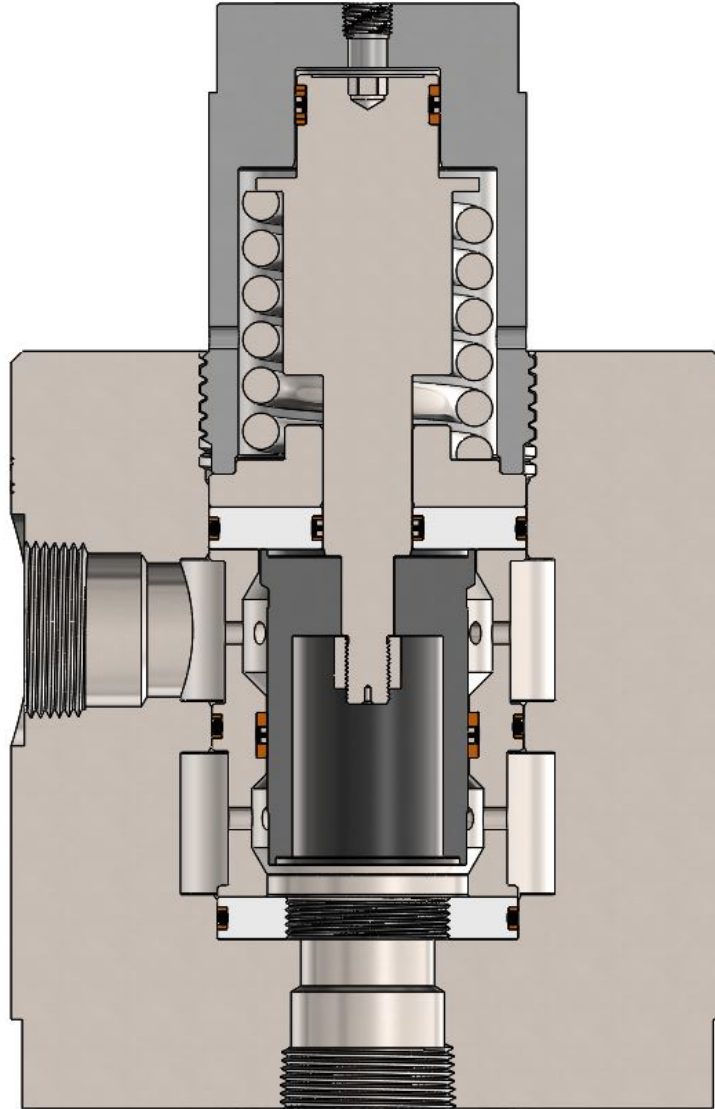


Gilmore announces the new 1-1/2 inch GEN 2 SPM product line for critical offshore and subsea applications. The 1-1/2 inch GEN 2 SPM has been redesigned with significant improvements, within the same cavity and footprint as the legacy SPM, allowing direct replacement in existing Gilmore SPM manifolds. Gilmore's proprietary SPM cartridge technology provides an order of magnitude improvement in SPM cycle life.

Features and Benefits:

- Qualification exceeds API 16D requirements –
 - Two separate full flow tests at 2500 cycles each
- Proprietary bi-directional cartridge performs in both Normally Closed or Normally Open applications
- Reduces interflow
- Reduces pressure spikes
- Improved valve materials:
 - 316 SS Body and Spring
 - Nitronic 50 Piston Rod
 - Nitronic 60 Seal Sleeve and Cage
 - Aluminium Bronze Bushing
 - Shouldered & Torqued Nylon Lock Nut
 - Dynamic T-Seals
 - HNBR Soft Seals with PEEK Double Back-up Rings
 - Delrin 511P Top and Bottom Seats
- Options available for 3000 psi or 5000 psi pilot MAWP
- Wide array of options available for body & port style, and customized manifolded assemblies
- Patent Pending

Figure 1. PN 29066: 1-1/2 inch GEN 2 SPM Valve, N.C., 1-1/2 inch NPTF, 1/4 inch NPTF 5000 psi Pilot



Gilmore has met or exceeded API 16D requirements by qualifying the new 1-1/2 inch GEN 2 SPM designs to multiple endurance qualification tests to 2500 cycles, at 5000 psi and 250 GPM, with 1% - 4% water glycol test fluid.

The new 1-1/2 inch GEN 2 SPM Cartridge and Valve have the identical cavity and valve footprint dimensions as the legacy SPM, allowing drop-in replacement.

As a result of the new Gilmore 1-1/2 inch GEN 2 SPM product line, please note that sales of the legacy 1-1/2 inch SPM Cartridge and Valve part numbers listed below will be discontinued as of January 27, 2021. The new Gilmore 1-1/2 inch GEN 2 SPM Cartridge and Valves are now available as a replacement for the legacy 1-1/2 inch SPM Cartridge and Valves.



After new legacy valve sales are discontinued, Gilmore will continue to support the legacy 1-1/2 inch SPM product line:

- Gilmore will continue providing repair kits and seal kits in support of discontinued legacy 1-1/2 inch SPM Cartridge and Valves for a minimum of 3 years. The legacy 1-1/2 inch SPM Cartridge and Valves listed below are field repairable.
- Gilmore Aftermarket will continue to support discontinued legacy products with factory failure analysis and repair services for a minimum of 3 years.

Please note that GEN 2 repair kits are not interchangeable with legacy repair kits and cannot be used in legacy SPMs. Please contact Gilmore Customer Service to assist you with selecting the GEN 2 replacement valve part numbers.

Table 1 New and Legacy 1-1/2 inch SPM Part Number Cross References

Item	Legacy Description	Legacy Valve PN	Legacy Repair Kit PN	GEN 2 Cartridge or Valve Description	GEN 2 Valve PN	GEN 2 Repair Kit PN
1.1	Valve, 1-1/2 inch SPM, N.O., 5000 psi Pilot, 1/4 NPT Pilot Port, 1-1/2 NPT Block Ports	27614-1	27169-2 RK	Valve, 1-1/2 inch GEN 2 SPM, N.O., 5000 psi Pilot, 1/4 NPT Pilot Port, 1-1/2 NPT Block Ports	29065	29065 RK
1.2	Valve, 1-1/2 inch SPM, N.C., 5000 psi Pilot, 1/4 NPT Pilot Port, 1-1/2 NPT Block Ports	27615-1	27170-2 RK	Valve, 1-1/2 inch GEN 2 SPM, N.C., 5000 psi Pilot, 1/4 NPT Pilot Port, 1-1/2 NPT Block Ports	29066	29067RK
1.3	N/A	N/A	N/A	Valve, 1-1/2 inch GEN 2 SPM, N.C., 5000 psi Pilot, 1/4 NPT Pilot Port, 1-1/2 Code 62 Block Ports	29075	29067 RK
1.4	Cartridge, 1-1/2 inch SPM, N.O., 5000 psi Pilot, 1/4 NPT Pilot Port	27169-2	27169-2 RK	Cartridge, 1-1/2 inch GEN 2 SPM, N.O. & N.C., 5000 psi Pilot, 1/4 NPT Pilot Port	29067	29067 RK
1.5	Cartridge, 1-1/2 inch SPM, N.C., 5000 psi Pilot, 1/4 NPT Pilot Port	27170-2	27170-2 RK	Cartridge, 1-1/2 inch GEN 2 SPM, N.O. & N.C., 5000 psi Pilot, 1/4 NPT Pilot Port	29067	29067 RK
1.6	Cartridge, 1-1/2 inch SPM, N.C., 5000 psi Pilot, 1/4 NPT Pilot Port, Delrin Seats	27170-3	27170-3 RK	Cartridge, 1-1/2 inch GEN 2 SPM, N.O. & N.C., 5000 psi Pilot, 1/4 NPT Pilot Port	29067	29067 RK
1.7	Cartridge, 1-1/2 inch SPM", N.C., 3000 psi Pilot, 1/4 NPT Pilot Port, Delrin Seats	27170-3-1	27170-3-1 RK	Cartridge, 1-1/2 inch GEN 2 SPM, N.O. & N.C., 3000 psi Pilot, 1/4 NPT Pilot Port	29074	29074 RK
1.8	Cartridge, 1-1/2 inch SPM, N.O., 3000 psi Pilot, 1/4 NPT Pilot Port	27552	27552 RK	Cartridge, 1-1/2 inch GEN 2 SPM, N.O. & N.C., 3000 psi Pilot, 1/4 NPT Pilot Port	29074	29074 RK
1.9	Cartridge, 1-1/2 inch SPM, N.C., 5000 psi Pilot, 1/4 NPT Pilot Port, Delrin Seats	28481	28481 RK	Cartridge, 1-1/2 inch GEN 2 SPM, N.O. & N.C., 5000 psi Pilot, 1/4 NPT Pilot Port	29067	29067 RK
1.10	Cartridge, 1-1/2 inch SPM, N.C., 3000 psi Pilot, 1/4 NPT Pilot Port, Delrin Seats	28482	28482 RK	Cartridge, 1-1/2 inch GEN 2 SPM, N.O. & N.C., 3000 psi Pilot, 1/4 NPT Pilot Port	29074	29074 RK



Table 2. Uncommon Legacy 1-1/2 inch SPM Valve Part Number Cross References

Item	Legacy Description	Legacy Valve PN	Legacy Repair Kit PN	GEN 2 Valve Description	GEN 2 Valve PN	GEN 2 Repair Kit PN
1.1	Cartridge, SPM, 1-1/2 inch, N.O., 5000 psi Pilot, 1/4 BSPP Pilot Port	28397	28397 RK	Cartridge, 1-1/2 inch GEN 2 SPM, N.O. & N.C., 5000 psi Pilot, 1/4 BSPP Pilot Port	29067-1	29067-1 RK
1.2	Cartridge, SPM, 1-1/2 inch, N.C., 5000 psi Pilot, 2-Way, Pilot Port 1/4 BSPP	28507	28507 RK	Cartridge, 1-1/2 inch GEN 2 SPM, N.O. & N.C., 5000 psi Pilot, 1/4 BSPP Pilot Port	29067-2	29067-2 RK
1.3	Cartridge, SPM, 1-1/2 inch, N.C., 5000 psi Pilot, 2-Way, Pilot Port 1/4 SAE	28602	28602 RK	Cartridge, 1-1/2 inch GEN 2 SPM, N.O. & N.C., 5000 psi Pilot, 1/4 SAE Pilot Port	29067-3	29067-3 RK
1.4	Conversion Kit, SPM, 1-1/2 inch, N.C., 5000 psi Pilot, Soft Goods	28157	N/A	Cartridge, 1-1/2 inch GEN 2 SPM, N.O. & N.C., 5000 psi Pilot, 1/4 NPT Pilot Port	29067	29067 RK
1.5	Conversion Kit, SPM, 1-1/2 inch, N.C., 5000 psi Pilot, Soft Goods and Seal Sleeve	28160	N/A	Cartridge, 1-1/2 inch GEN 2 SPM, N.O. & N.C., 5000 psi Pilot, 1/4 NPT Pilot Port	29067	29067 RK

If a new Gilmore 1-1/2 inch GEN 2 SPM part number is not listed above for a specific legacy part number, please contact Gilmore Customer Service to request a quotation and creation of a new GEN 2 part number.

Please contact Gilmore Customer Service to request drawings and quotations for these SPMs at info@proserv.com.

4

3

2

1

NOTES:

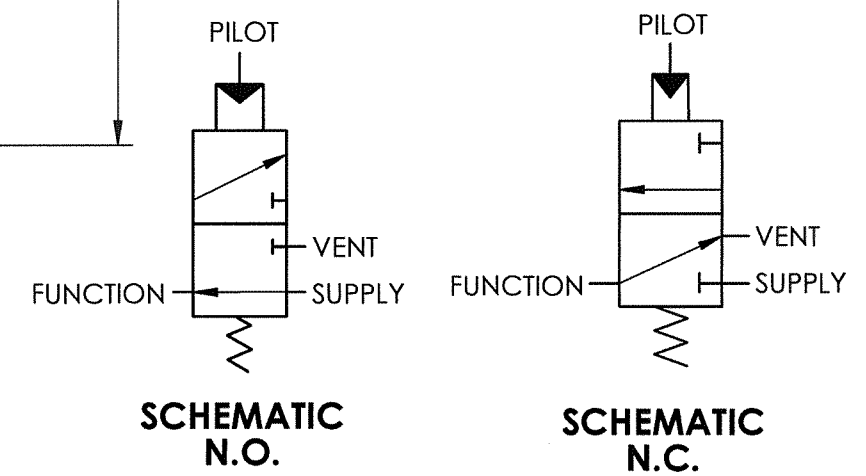
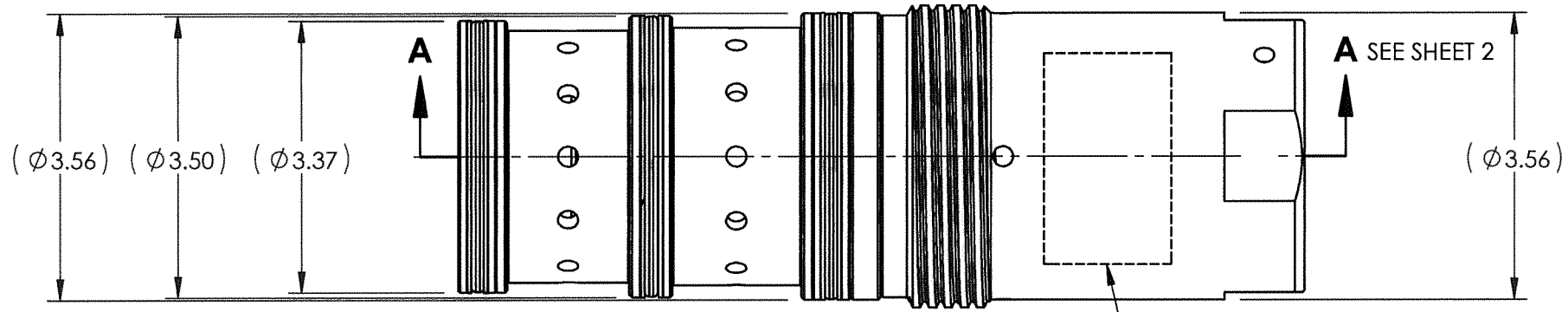
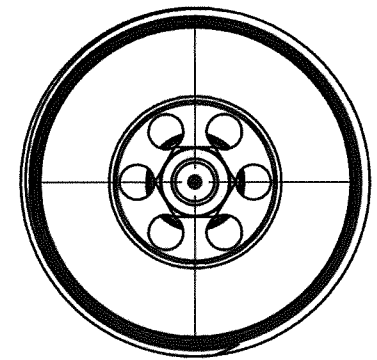
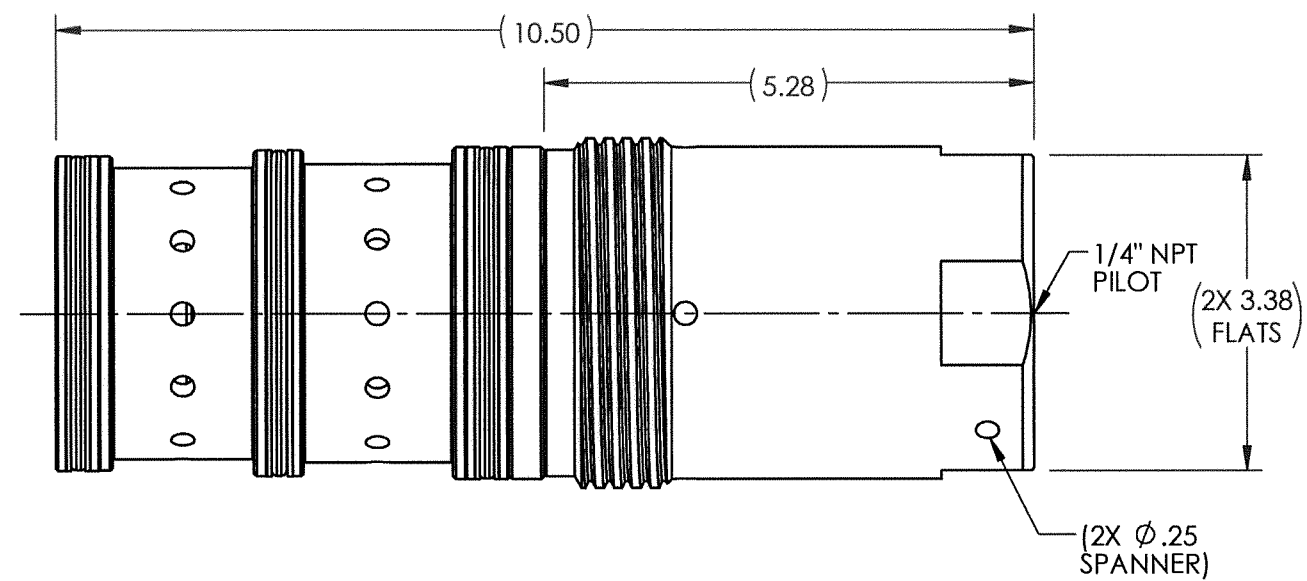
- 1 ▷ MARK COMPONENT WITH ASSEMBLY W.O. NUMBER AS SHOULD ON COMPONENT DRAWING
- 2 ▷ MARKING: MARK AS SHOWN USING LASER ETCH OR COMPUTER CONTROLLED DOT PEEN MARKING MACHINE, .06 HIGH MIN CHARACTERS.
- 3. FOR BOTTOM SEAL REMOVAL USE TOOL ATL 10010-003.
- 4. X, IN COLUMN DEPICTS PARTS IN SEAL KIT 29067 SK.
- 5. X, IN COLUMN DEPICTS PARTS IN REPAIR KIT 29067 RK.
- 6 ▷ TORQUE ITEM 4 TO 25 FT-LBS.
- 7 ▷ TORQUE ITEM 1 TO 300 FT-LBS IN BLOCK USING SPECIAL TOOL ATL 10112.
- 8 ▷ ALL MANUFACTURED ITEMS ARE PASSIVATED.
- 9 ▷ ASSEMBLY PROCEDURE: 50274
STANDARD FAT PROCEDURE: 50275
EXTENDED FAT PROCEDURE: 50276 (B)
SERVICE MANUAL: 51025

REVISIONS				
REV	ERN /ECO NUMBER	DRAWN	CHECKED	APPROVED
B	ECO 017165	CMY 10-2-19	JP 10/2/19	AJP 10/3/19

PRESSURE DATA
 SUPPLY MAWP: 5,000 PSI
 PILOT MAWP: 5,000 PSI
 AT 5000 PSI SUPPLY RECOMMENDED MINIMUM PILOT PRESSURE: 3,000 PSI
 AT 3000 PSI SUPPLY RECOMMENDED MINIMUM PILOT PRESSURE: 2,000 PSI

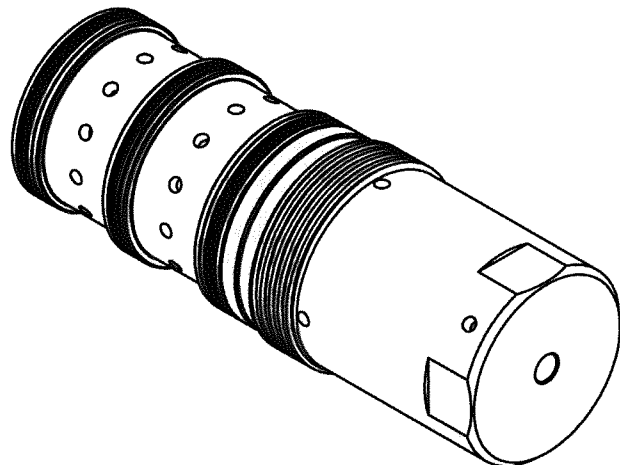
FLOW DATA
 CV = 11
 MAX FLOW CAPACITY: 250 GPM
 FLUIDS: 1.) WATER BASED DRILLING CONTROL FLUID.
 2.) MINERAL OIL BASED DRILLING CONTROL FLUID.

GENERAL DATA
 TEMPERATURE RANGE: 32 °F TO 150 °F
 APPROX WEIGHT: 19.5 LBS
 FIELD SERVICEABLE



29067
 VER (AX VERSION #)
 (SERIAL NUMBER)
 PATENT PENDING
 5,000 PSI
 (DATE OF MFG)
 SEE SHOP TRAVELER
 FOR ADDITIONAL
 INFO REQUIRED

PATENT PENDING



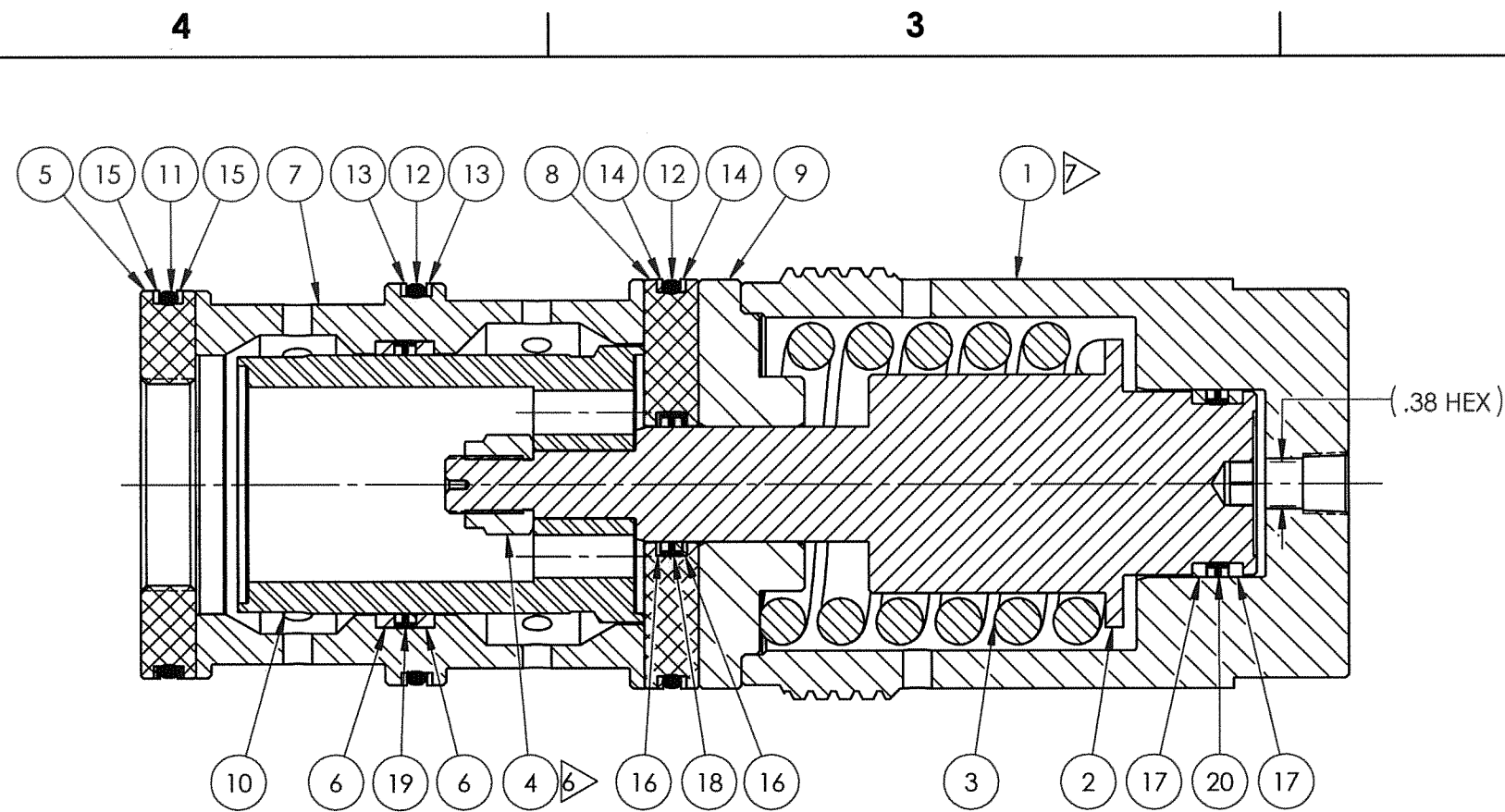
MATERIAL: SEE PARTS IN BOM	DIMENSIONS AND TOLERANCES ARE IN INCHES PER ASME Y14.5M-1994. UNLESS OTHERWISE SPECIFIED: 1) TOLERANCES: .X: ±.1 .XX: ±.01 .XXX: ±.005 ANGLES: ±.5° 2) SURFACE TEXTURE: 63 3) CORADIAL FEATURES SHALL BE WITHIN .010 4) BREAK SHARP EDGES .010 5) INTERNAL RADII SHALL BE .016 MAX 6) DRILL POINTS OPTIONAL WHEN SHOWN UNSPECIFIED. ALL DRILL POINT ANGLES SHALL BE BETWEEN 90°-140°	APPROVAL			
CONDITION:		DRAWN BY CMY	DATE 9-11-19		CARTRIDGE, SPM, GEN 2, 1-1/2", N.O OR N.C., 5000 PSI SUPPLY, 5000 PSI PILOT
TREATMENT:		CHECKED BY JP	DATE 9-11-19		
PROCEDURE NUMBER:		ENGINEER AJP	DATE 9-11-19		
	ERN NUMBER 02311	DATE 5-24-19	THE INFORMATION CONTAINED IN THIS DRAWING IS THE SOLE PROPERTY OF GILMORE VALVE CO UNLESS OTHERWISE STATED. ANY REPRODUCTION IN PART OR WHOLE WITHOUT THE WRITTEN PERMISSION OF GILMORE VALVE CO IS PROHIBITED.	SIZE B DWG NO 29067 REV B	
		SCALE 1:2	SolidWorks	SHEET 1 OF 2	

4

3

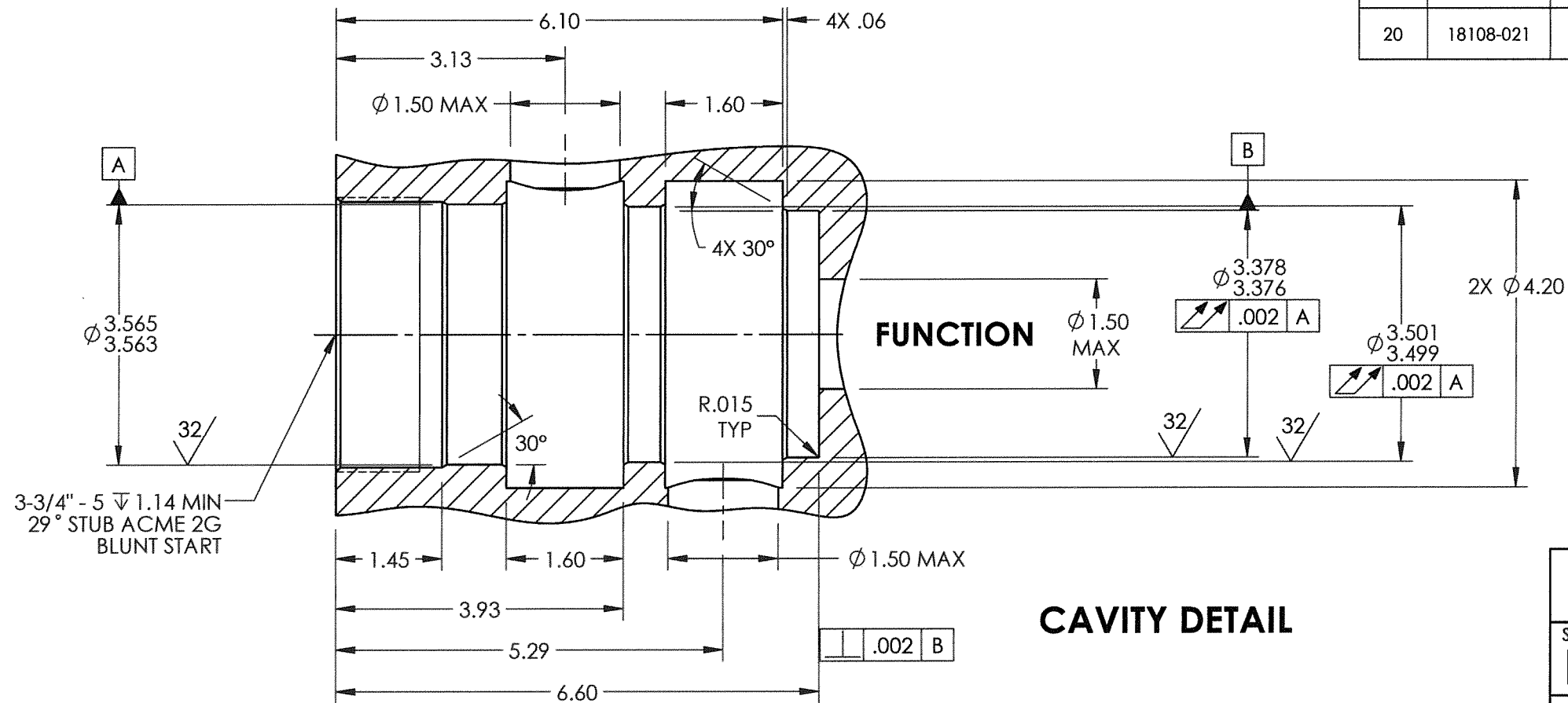
2

1



**SECTION A-A
SCALE 1 : 1.5**

BILL OF MATERIALS						
ITEM NO	PART NUMBER	DESCRIPTION	MATERIAL	QTY	RK	SEAL KIT
1	183394	SPRING HOUSING, GUIDED, NPT, 5000 PSI	A276 TP S21800 (NITRONIC 60)	1		
2	116409	PISTON ROD, SHOULDERS NUT, 5000 PSI	A276 TP S20910 (NITRONIC 50)	1		
3	27200	SPRING COMPRESSION	A313 TP 316 (316 SS)	1		
4	21112-007	NUT, HEX LOCK	ASTM F594 ALLOY GR2 (316 SS) / NYLON	1	X	X
5	116406	SEAT, BOTTOM, 1-1/2" VALVE	DELRIN 511P	1	X	X
6	27204	WEARBAND	DELRIN AF	2	X	X
7	116610	SPACER	A276 S21800 (NITRONIC 60)	1		
8	116405	SEAT, TOP, 1-1/2" VALVE	DELRIN 511P	1	X	X
9	116408	BUSHING, 1-1/2" VALVE	ASTM B169 C61400	1		
10	116412	SLEEVE, 1-1/2" VALVE	A276 TP UNS S21800 (NITRONIC 60)	1	X	
11	18100-129K1	O-RING	HNBR	1	X	X
12	18100-128K1	O-RING	HNBR	2	X	X
13	198444	WEAR BAND, PISTON, 1/2"	PEEK	2	X	X
14	18110-236P	BACKUP RING	PEEK	2	X	X
15	18110-235P	BACKUP RING	PEEK	2	X	X
16	202829	BACKUP RING	PEEK	2	X	X
17	198443	WEAR BAND, PISTON, 5000 PSI	DELRIN AF	2	X	X
18	18108-514	T-SEAL, ROD	CARBOXYLATED NITRILE / NYLATRON	1	X	X
19	202608	T-SEAL, ROD	CARBOXYLATED NITRILE / NYLATRON	1	X	X
20	18108-021	T-SEAL, PISTON	CARBOXYLATED NITRILE / NYLATRON	1	X	X



CAVITY DETAIL

SIZE	DWG NO	REV
B	29067	B
SCALE	1:2	SHEET 2 OF 2

4

3

2

1

NOTES:

- 1 MARK COMPONENT WITH ASSEMBLY W.O. NUMBER AS SHOWN ON COMPONENT DRAWING
- 2 MARKING: MARK AS SHOWN USING LASER ETCH OR COMPUTER CONTROLLED DOT PEEN MARKING MACHINE, .06 HIGH MIN CHARACTERS.
- 3. FOR BOTTOM SEAL REMOVAL USE TOOL ATL 10010-003.
- 4. X, IN COLUMN DEPICTS PARTS IN SEAL KIT 29067 SK.
- 5. X, IN COLUMN DEPICTS PARTS IN REPAIR KIT 29067 RK.
- 6 TORQUE CARTRIDGE TO 300 FT-LBS IN MANIFOLD BLOCK USING SPECIAL TOOL ATL 10112.
- 7 ASSEMBLY PROCEDURE: 50274
STANDARD FAT PROCEDURE: 50275
EXTENDED FAT PROCEDURE: 50276
SERVICE MANUAL: 51025

REVISIONS				
REV	ERN /ECO NUMBER	DRAWN	CHECKED	APPROVED
B	ECO 017476	ay 11-5-19	SP 11/5/19	AJP 11/5/19

PRESSURE DATA

SUPPLY MAWP: 5,000 PSI
 PILOT MAWP: 5,000 PSI
 AT 5000 PSI SUPPLY RECOMMENDED
 MINIMUM PILOT PRESSURE: 3,000 PSI
 AT 3000 PSI SUPPLY RECOMMENDED
 MINIMUM PILOT PRESSURE: 2,000 PSI

FLOW DATA

Cv = 11
 MAX FLOW CAPACITY: 250 GPM

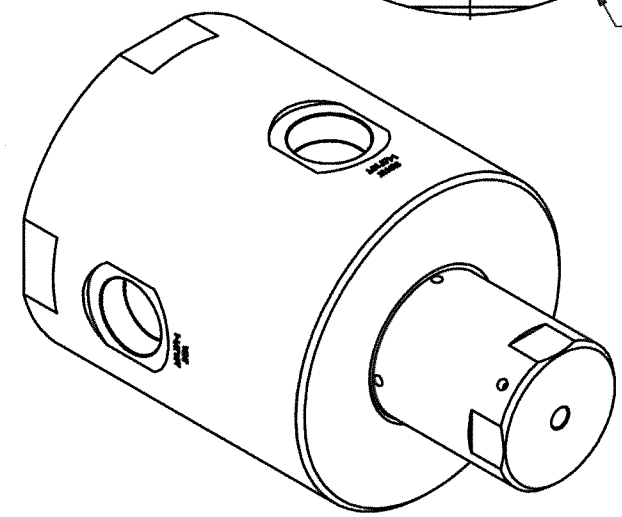
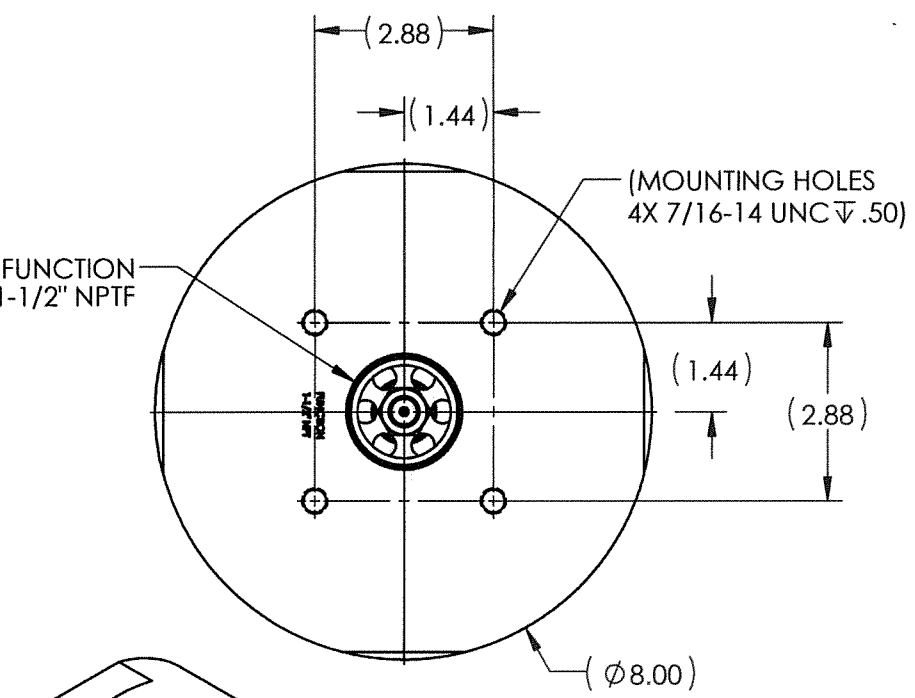
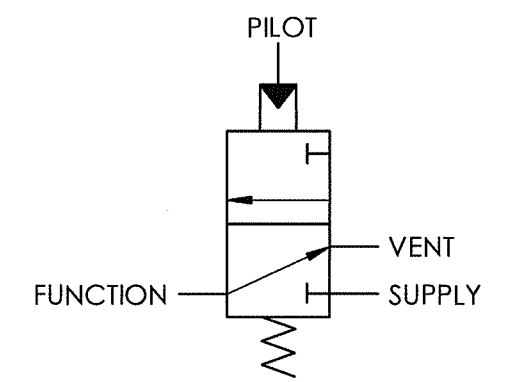
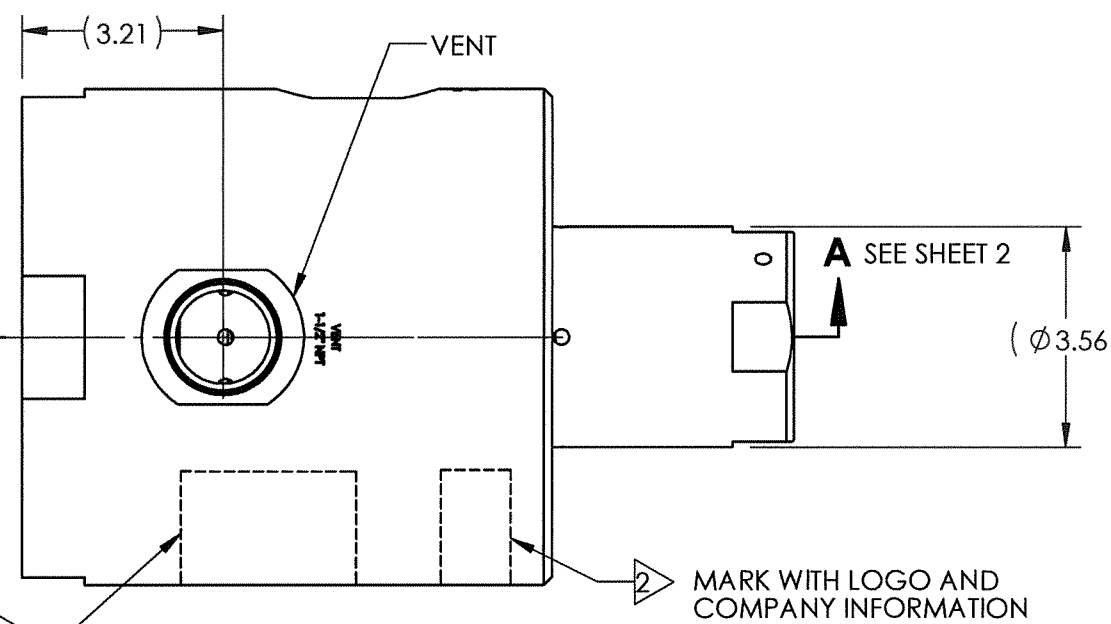
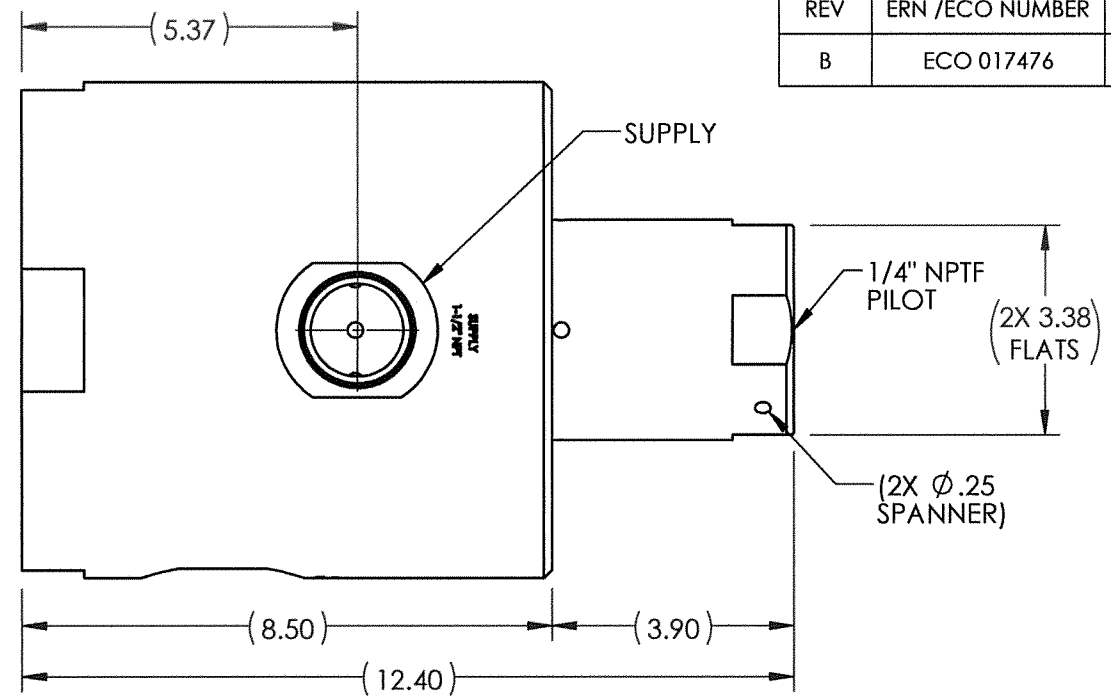
FLUIDS: 1.) WATER BASED DRILLING CONTROL FLUID.
 2.) MINERAL OIL BASED DRILLING CONTROL FLUID.

PORTS

SUPPLY: 1-1/2" NPTF
 FUNCTION: 1-1/2" NPTF
 VENT: 1-1/2" NPTF
 PILOT: 1/4" NPTF

GENERAL DATA

TEMPERATURE RANGE: 32°F TO 150°F
 APPROX WEIGHT: 116 LBS
 FIELD SERVICEABLE



29066
 VER (AX VERSION #)
 (SERIAL NUMBER-
 SAME S/N AS CARTRIDGE)
 PATENT PENDING
 5,000 PSI
 (DATE OF MFG)
 SEE SHOP TRAVELER
 FOR ADDITIONAL
 INFO REQUIRED

PATENT PENDING

MATERIAL: SEE PARTS IN BOM	DIMENSIONS AND TOLERANCES ARE IN INCHES PER ASME Y14.5M-1994. UNLESS OTHERWISE SPECIFIED: 1) TOLERANCES: .X: ±.1 .XX: ±.01 .XXX: ±.005 ANGLES: ±.5° 2) SURFACE TEXTURE: 63/√	APPROVAL		
		DRAWN BY CMY	DATE 9-11-19	
CONDITION:	3) CORADIAL FEATURES SHALL BE © WITHIN .010 4) BREAK SHARP EDGES .010 5) INTERNAL RADII SHALL BE .016 MAX 6) DRILL POINTS OPTIONAL WHEN SHOWN UNSPECIFIED, ALL DRILL POINT ANGLES SHALL BE BETWEEN 90°-140°	CHECKED BY JP	DATE 9-11-19	VALVE, SPM, GEN 2, 1-1/2", N.C., 5000 PSI SUPPLY, 5000 PSI PILOT, 1-1/2" NPTF
TREATMENT:		ENGINEER AJP	DATE 9-11-19	
PROCEDURE NUMBER:		ERN NUMBER 02311	DATE 5-24-19	SIZE B DWG NO 29066 REV B
THE INFORMATION CONTAINED IN THIS DRAWING IS THE SOLE PROPERTY OF GILMORE VALVE CO UNLESS OTHERWISE STATED. ANY REPRODUCTION IN PART OR WHOLE WITHOUT THE WRITTEN PERMISSION OF GILMORE VALVE CO IS PROHIBITED.			SCALE 1:4	SolidWorks SHEET 1 OF 2

4

3

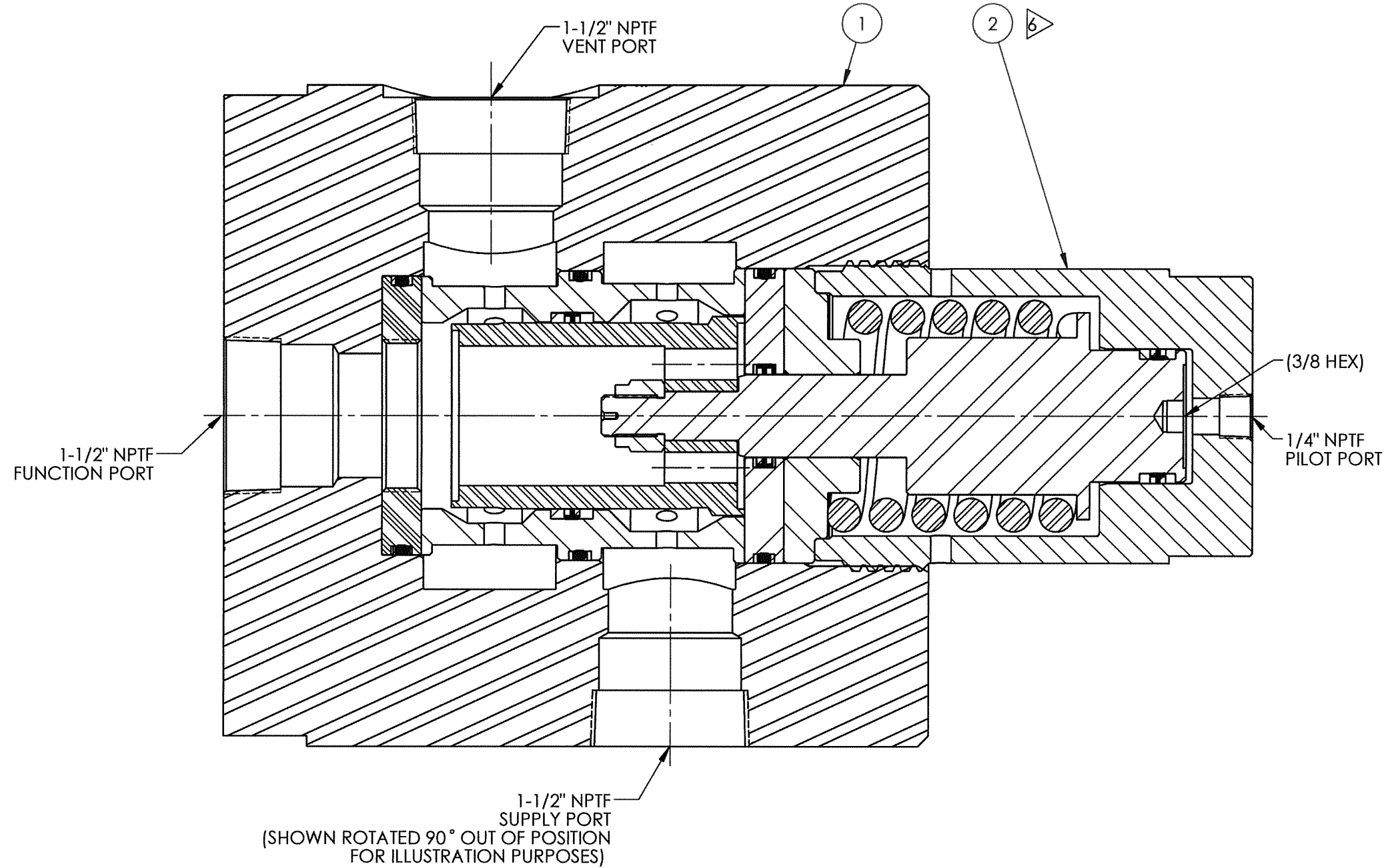
2

1

BILL OF MATERIALS						
ITEM NO	PART NUMBER	DESCRIPTION	MATERIAL	QTY	RK	SK
1	27396-2	BLOCK, 1-1/2 SPM, N.C., 1-1/2" NPTF	A276 TP316	1		
2	29067	CARTRIDGE, SPM, GEN 2, 1-1/2", N.O. OR N.C., 5000 PSI SUPPLY, 5000 PSI PILOT	SEE PARTS IN BOM	1	X	X

B


B



A

A

SECTION A-A
SCALE 1 : 1.5

		ENGINEERING	
SIZE B	DWG NO 29066	REV B	
SCALE 1:2	SolidWorks	SHEET 2 OF 2	

4

3

2

1

4

3

2

1

NOTES:

- 1 MARK COMPONENT WITH ASSEMBLY W.O. NUMBER AS SHOWN ON COMPONENT DRAWING
- 2 MARKING: MARK AS SHOWN USING LASER ETCH OR COMPUTER CONTROLLED DOT PEEN MARKING MACHINE, .06 HIGH MIN CHARACTERS.
- 3. FOR BOTTOM SEAL REMOVAL USE TOOL ATL 10010-003.
- 4. X, IN COLUMN DEPICTS PARTS IN SEAL KIT 29067 SK.
- 5. X, IN COLUMN DEPICTS PARTS IN REPAIR KIT 29067 RK.
- 6 TORQUE CARTRIDGE TO 300 FT-LBS IN MANIFOLD BLOCK USING SPECIAL TOOL ATL 10112.
- 7 ASSEMBLY PROCEDURE: 50274
STANDARD FAT PROCEDURE: 50275
EXTENDED FAT PROCEDURE: 50276
SERVICE MANUAL: 51025

REVISIONS				
REV	ERN /ECO NUMBER	DRAWN	CHECKED	APPROVED
A	ERN 02311	CLY 9-11-19	JF 9/11/19	AGB 9/11/19

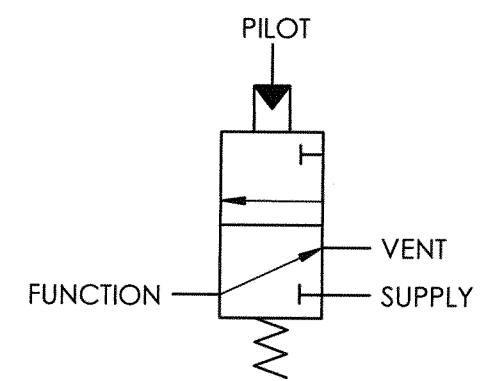
PRESSURE DATA
 SUPPLY MWAP: 5,000 PSI
 PILOT MAWP: 5,000 PSI
 AT 5000 PSI SUPPLY RECOMMENDED
 MINIMUM PILOT PRESSURE : 3,000 PSI
 AT 3000 PSI SUPPLY RECOMMENDED
 MINIMUM PILOT PRESSURE: 2,000 PSI

FLOW DATA
 Cv = 11
 MAX FLOW CAPACITY: 250 GPM

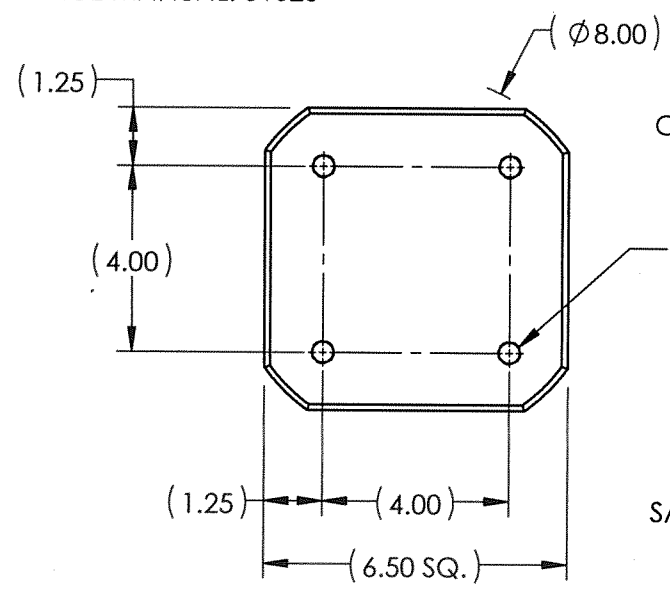
FLUIDS: 1.) WATER BASED DRILLING CONTROL FLUID.
 2.) MINERAL OIL BASED DRILLING CONTROL FLUID.

PORTS
 SUPPLY: 1-1/2" CODE 62 SEAL SUB
 FUNCTION: 1-1/2" CODE 62 SEAL SUB
 VENT: 1-1/2" CODE 62 SEAL SUB
 PILOT: 1/4" NPT

GENERAL DATA
 TEMPERATURE RANGE: 32°F TO 150°F
 APPROX WEIGHT: 116 LBS
 FIELD SERVICEABLE



PATENT PENDING

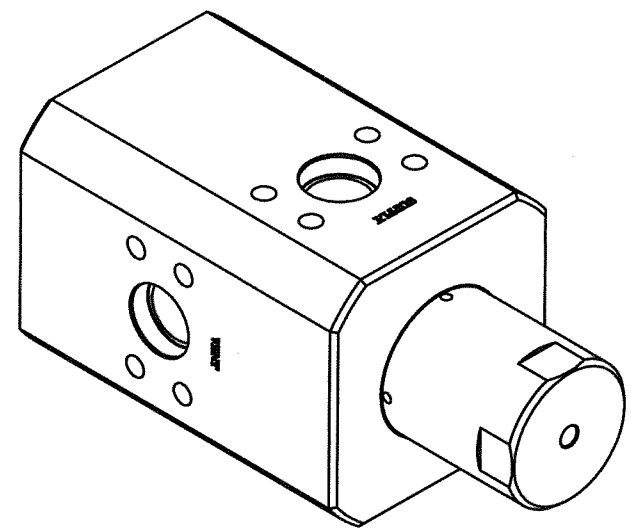
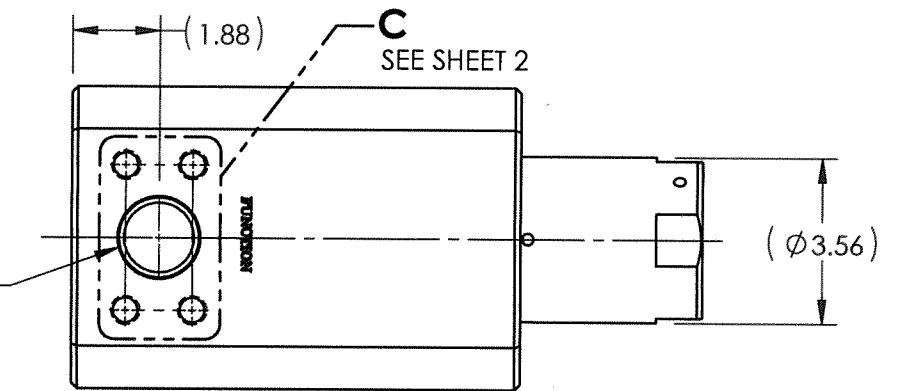
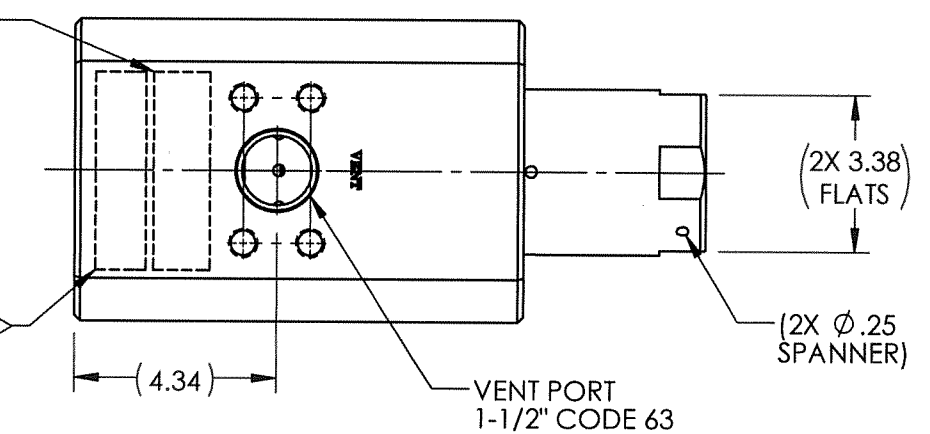
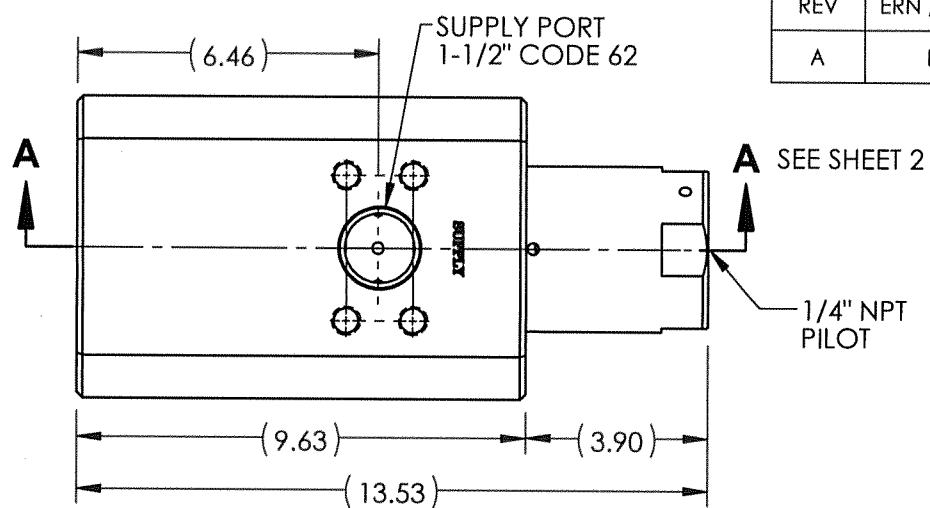


MARK WITH LOGO AND COMPANY INFORMATION

(MOUNTING HOLES 4X 1/2-20 UNF ∇ 1.00)

29075
 VER (AX VERSION #)
 (SERIAL NUMBER-
 SAME S/N AS CARTRIDGE)
 PATENT PENDING
 5,000 PSI
 (DATE OF MFG)
 SEE SHOP TRAVELER
 FOR ADDITIONAL
 INFO REQUIRED

FUNCTION PORT 1-1/2" CODE 63



MATERIAL: SEE PARTS BOM	DIMENSIONS AND TOLERANCES ARE IN INCHES PER ASME Y14.5M-1994. UNLESS OTHERWISE SPECIFIED: 1) TOLERANCES: .X: ±.1 .XX: ±.01 .XXX: ±.005 ANGLES: ±.5° 2) SURFACE TEXTURE: 63 3) CORADIAL FEATURES SHALL BE © WITHIN .010 4) BREAK SHARP EDGES .010 5) INTERNAL RADII SHALL BE .016 MAX 6) DRILL POINTS OPTIONAL WHEN SHOWN UNSPECIFIED, ALL DRILL POINT ANGLES SHALL BE BETWEEN 90°-140°	APPROVAL	
CONDITION:		DRAWN BY CLY	DATE 9-11-19
TREATMENT:		CHECKED BY JF	DATE 9/11/19
PROCEDURE NUMBER:		ENGINEER AGB	DATE 9/11/19
	ERN NUMBER 02311	DATE 8-22-19	
THE INFORMATION CONTAINED IN THIS DRAWING IS THE SOLE PROPERTY OF GILMORE VALVE CO UNLESS OTHERWISE STATED. ANY REPRODUCTION IN PART OR WHOLE WITHOUT THE WRITTEN PERMISSION OF GILMORE VALVE CO IS PROHIBITED.			

proserv Gilmore

**VALVE, SPM, GEN 2, 1-1/2", N.C.
 5000 PSI SUPPLY, 5000 PSI PILOT,
 SQ BODY, 1-1/2" CODE 62**

SIZE DWG NO
B 29075

SCALE 1:4 SolidWorks SHEET 1 OF 2

4

3

2

1

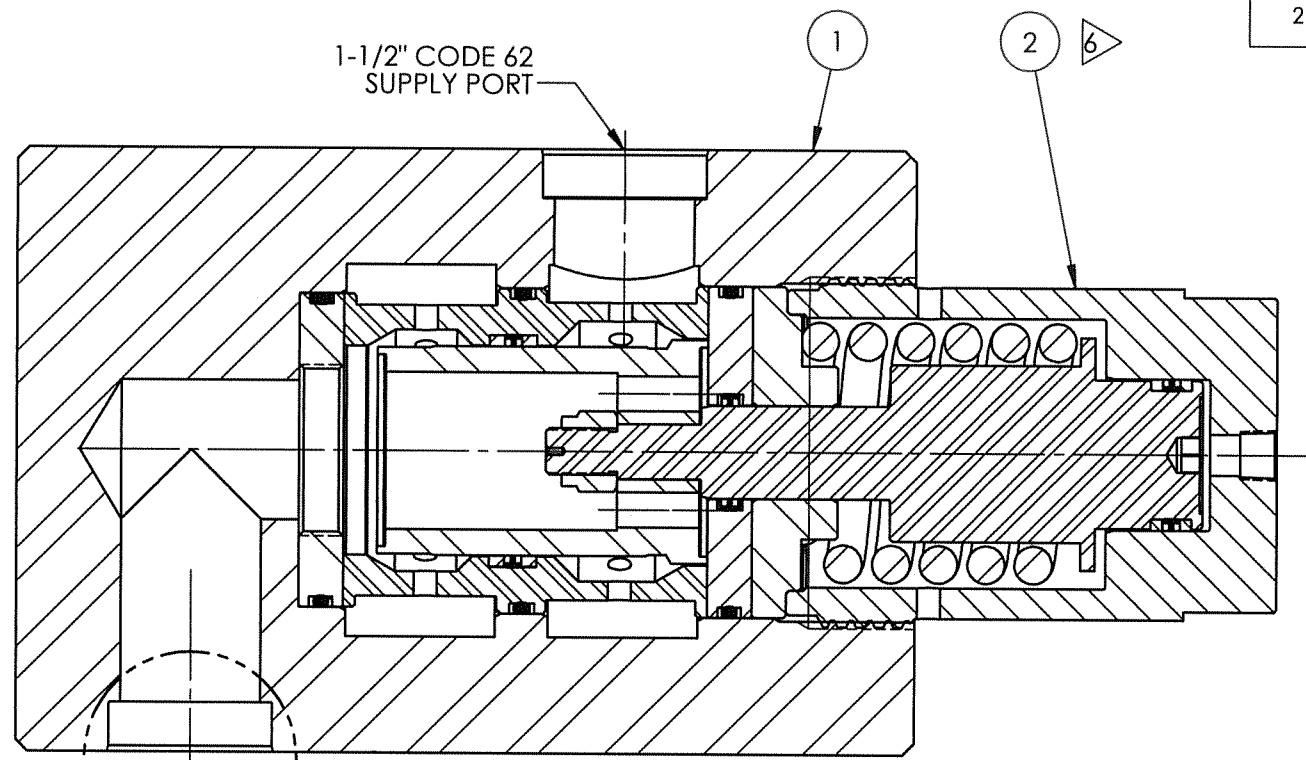
4

3

2

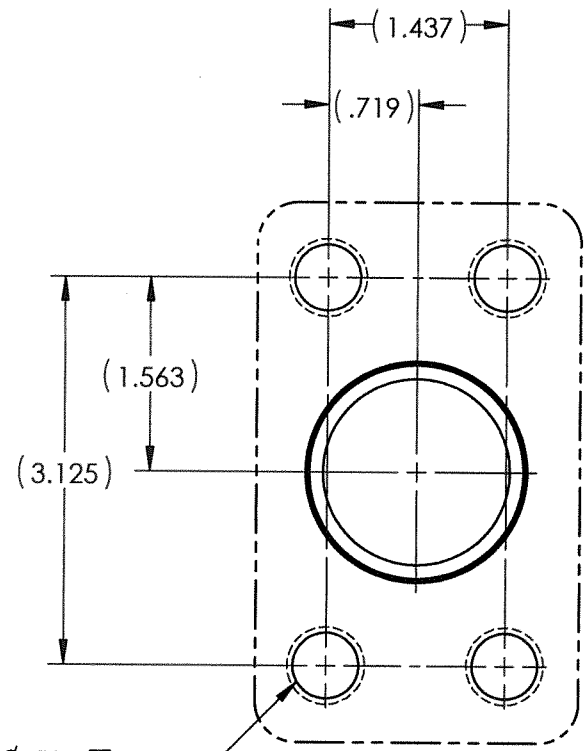
1

BILL OF MATERIALS					
ITEM NO	PART NUMBER	DESCRIPTION	MATERIAL		
1	203161	BLOCK, SQ, 1-1/2" SPM N.C. 1-1/2" CODE 62	A564 T630 (17-4PH)	1	
2	29067	CARTRIDGE, SPM, GEN 2, 1-1/2" N.O OR N.C., 5000 PSI SUPPLY, 5000 PSI PILOT	SEE PARTS IN BOM	1	X X



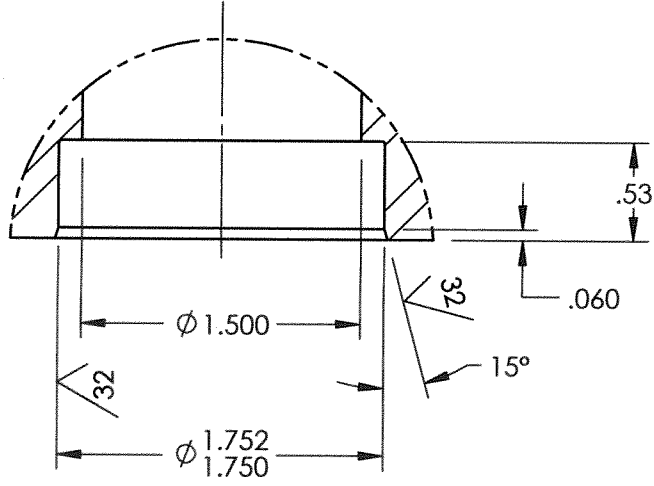
1-1/2" CODE 62
FUNCTION PORT

SECTION A-A
SCALE 1 : 2



(12X ϕ .531 ∇ 1.25
5/8-11 UNC-2B ∇ 1.00)

DETAIL C
SCALE 1 : 1.5
3 PLACES



DETAIL B
SCALE 1 : 1
3 PLACES

SIZE B	DWG NO 29075	REV A	
SCALE 1:4	SolidWorks	SHEET 2 OF 2	

4

3

2

1